

LEA Name : Manheim Township SD
Address : PO Box 5134
Lancaster , PA 17606

County : Lancaster
AUN Number : 113364503
LEA Type : SD

Annual Financial Report Accuracy Certification Statement

For Fiscal Year Ending
6/30/2024

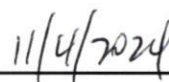
Pennsylvania Department of Education
&
Office of Comptroller Operations

PDE-2056: Intermediate Unit
PDE-2057: School District, AVTS/CTC, Charter School,
and Special Program Jointure

CERTIFICATION: By signing this page I agree that the electronic data submitted is a complete and accurate statement of the financial operations and status of the local education agency for the fiscal year. It has been prepared in accordance with generally accepted accounting principles and established Commonwealth of PA reporting guidelines.



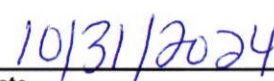
Chief School Administrator Signature



Date



Board Secretary Signature



Date

Steve Brubaker

Contact Person

(717)560-3113 Ext :

Contact Person Telephone Number

brubakst@mtwp.net

Contact Person E-mail Address

(717)569-3729

Contact Person Fax Number

Audit Certification
Annual Financial Report:
For Fiscal Year Ending **6/30/2024**
(Pursuant to PA School Code Section 218(b))

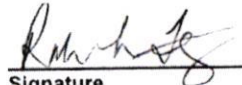
LEA Name : Manheim Township SD
AUN Number : 113364503
County : Lancaster

Audit Certification Due: 12/31/2024

This certification is applicable to the Annual Financial Report data submitted through the Consolidated Financial Reporting System (CFRS).

CERTIFICATION: By signing this page I agree that the financial statements of the school have been properly audited as noted above pursuant to Article XXIV, and in the auditor's professional opinion, the Annual Financial Report (PDE-2057) submitted through CFRS is materially consistent with the audited financial statements.

Chief School Administrator

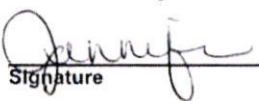


Signature

11/4/2024

Date

Board Secretary



Signature

10/31/2024

Date

Steve Brubaker

Contact Person

brubakst@mtwp.net

Contact Person E-mail Address

(717)560-3113

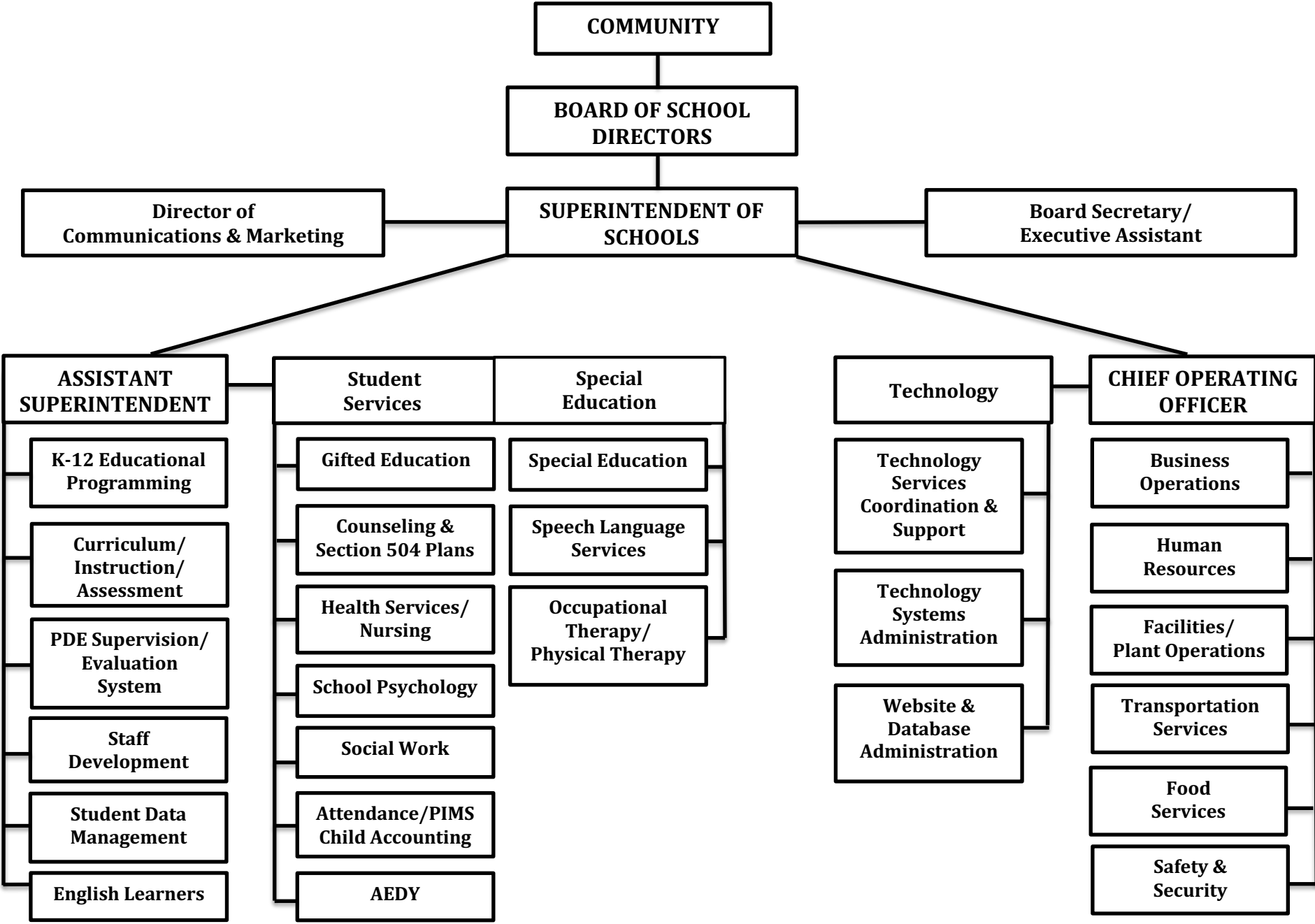
Ext :

Contact Person Telephone Number

(717)569-3729

Contact Person Fax Number

MANHEIM TOWNSHIP SCHOOL DISTRICT
Organizational Chart





Book	Policy Manual
Section	600 Finances
Title	GASB Statement 34
Code	622
Status	Active
Adopted	February 20, 2003
Last Revised	August 15, 2019

Purpose

The Board recognizes the need to implement the required accounting and financial reporting standards stipulated by the Pennsylvania Department of Education.

The primary objectives of implementing the Governmental Accounting Standards Board (GASB) Statement 34 are to assure compliance with state requirements, and properly account for both the financial and economic resources of the district.

Authority

Participation of the school district in any such activity shall be in accordance with Board policy.[\[1\]](#)[\[2\]](#)

Delegation of Responsibility

The responsibility to coordinate the compilation and preparation of all information necessary to implement this policy is delegated to the Chief Operating Officer or designee.

The designated individual shall be responsible for implementing the necessary procedures to establish and maintain a fixed asset inventory, including depreciation schedules. Depreciation shall be computed on a straight-line basis over the useful lives of the assets, using an averaging convention. Normal maintenance and repairs shall be charged to expense as incurred; major renewals and betterments that materially extend the life or increase the value of the asset shall be capitalized. A schedule of accumulated depreciation shall be consistent from year to year. The basis for depreciation, including groups of assets and useful lives, shall be in writing and submitted for review to the Board.

The Chief Operating Officer or designee shall prepare the required Management Discussion and Analysis (MD&A). The MD&A shall be in the form required by GASB Statement 34 and shall be submitted to the Board for approval, prior to publication.

Prior to submission of the MD&A with the district's annual audit the district's independent auditors shall review the MD&A, in accordance with SAS No. 52, "Required Supplementary Information."

Legal [1. 24 P.S. 218](#)
[2. 24 P.S. 613](#)
[Governmental Accounting Standards Boards, Statement 34](#)

Val Number

Description

Justification

30116 Revenue Detail: A large amount has been reported as Earnings on Investments in Fund 32, account 6500, which should only include interest and/or dividend earnings. Correct or provide a brief explanation of the revenue reported.

The amount reported represents interest earnings of the capital reserve fund.

Revenue Detail 6500, Fund 32: \$444,953.48

30149 Revenue Detail: An amount has been reported in revenue code 6839. Any revenue received or passed through from another PA LEA (Intermediate Units, School Districts, Charter Schools, and Career Technology Centers) should be reported in the most applicable account(s) 6831, 6832, 6833, 6834, 6836, and/or 6838. Please confirm within the justification that no pass through funds from other LEAs are included in 6839.

No federal pass through funds from other LEAs are included in the \$16,006.45 reported in 6839.

Governmental Fund Revenue, Account 6839: \$16,006.45

41162 Expenditure Detail, Salaries (Object 100) and Benefits (Object 200 series): Amounts must be entered for both Salaries and Benefits.

Function 2390 represents travel insurance for administrators.

Please verify following fund and function codes:
Fund 10 Function 2390;

50278 SOIN: Current Year AFR amount must equal Prior Year AFR amount.

The beginning balance was restated due to a SBITA existing in the previous year which was not reported and existed prior to GASB 96. The restatement had no effect on the net assets.

SOIN, Beg Bal, Govt Funds Leases & Other Right to Use Arrangements:
\$4,166,663.70
PY Ending Bal, Govt Funds Leases & Other Right to Use Arrangements:
\$3,356,375.70

Amounts Expressed in Whole Dollars	<u>General Fund</u> <u>(10)</u>	<u>Student Sponsored</u> <u>Activity Fund</u> <u>(21)</u>	<u>Public Purpose Trust</u> <u>(27)</u>	<u>Other Compt Approved</u> <u>(28)</u>	<u>Athletic / Activity</u> <u>(29)</u>
Assets And Deferred Outflows Of Resources					
Assets					
0100 Cash and Cash Equivalents	22,678,433				
0110 Investments	7,871,834				
0120 Taxes Receivable	765,969				
0130 Due From Other Funds					
0141 Due From Other Governments	2,565,862				
0142 State Revenue Receivable	4,101,050				
0143 Federal Revenue Receivable	221,350				
0145 Other Intergovernmental Revenue Receivable					
0146 Due from Primary Government					
0147 Due from Component Unit					
0150 Other Receivables	1,566,242				
0170 Inventories	7,546				
0180 Prepaid Expenses (Expenditures)	34,670				
0190 Other Current Assets					
Total Assets	\$39,812,956				
0910 Deferred Outflows of Resources					
Total Assets And Deferred Outflows Of Resources	\$39,812,956				

Amounts Expressed in Whole Dollars	<u>Capital Reserve (690.</u> <u>1850)</u> <u>(31)</u>	<u>Capital Reserve (1431)</u> <u>(32)</u>	<u>Other Capital Projects</u> <u>Fund</u> <u>(39)</u>	<u>Debt Service</u> <u>(40)</u>	<u>Permanent</u> <u>(90)</u>
Assets And Deferred Outflows Of Resources					
Assets					
0100 Cash and Cash Equivalents		8,052,869	1,578,603		
0110 Investments		3,202,529	8,591,053		
0120 Taxes Receivable					
0130 Due From Other Funds		2,000,000			
0141 Due From Other Governments					
0142 State Revenue Receivable					
0143 Federal Revenue Receivable					
0145 Other Intergovernmental Revenue Receivable					
0146 Due from Primary Government					
0147 Due from Component Unit					
0150 Other Receivables					
0170 Inventories					
0180 Prepaid Expenses (Expenditures)					
0190 Other Current Assets					
Total Assets		\$13,255,398	\$10,169,656		
0910 Deferred Outflows of Resources					
Total Assets And Deferred Outflows Of Resources		\$13,255,398	\$10,169,656		

Amounts Expressed in Whole Dollars

Total Governmental Funds

Assets And Deferred Outflows Of Resources

Assets	
0100 Cash and Cash Equivalents	32,309,905
0110 Investments	19,665,416
0120 Taxes Receivable	765,969
0130 Due From Other Funds	2,000,000
0141 Due From Other Governments	2,565,862
0142 State Revenue Receivable	4,101,050
0143 Federal Revenue Receivable	221,350
0145 Other Intergovernmental Revenue Receivable	
0146 Due from Primary Government	
0147 Due from Component Unit	
0150 Other Receivables	1,566,242
0170 Inventories	7,546
0180 Prepaid Expenses (Expenditures)	34,670
0190 Other Current Assets	
Total Assets	\$63,238,010
0910 Deferred Outflows of Resources	
Total Assets And Deferred Outflows Of Resources	\$63,238,010

Amounts Expressed in Whole Dollars	<u>General Fund</u> <u>(10)</u>	<u>Student Sponsored</u> <u>Activity Fund</u> <u>(21)</u>	<u>Public Purpose Trust</u> <u>(27)</u>	<u>Other Compt Approved</u> <u>(28)</u>	<u>Athletic / Activity</u> <u>(29)</u>
Liabilities And Deferred Inflows Of Resources And Fund Balances					
Liabilities					
0400 Due to Other Funds	2,868,941				
0411 Due to Other Governments	222,751				
0412 Due to Primary Government					
0413 Due to Component Unit					
0420 Accounts Payable	736,363				
0430 Contracts Payable					
0440 Current Portion of Long-Term Debt					
0450 Short-Term Payables					
0461 Accrued Salaries and Benefits	11,997,329				
0462 Payroll Deductions and Withholding	618,077				
0480 Unearned Revenues	65,276				
0490 Other Current Liabilities	138,642				
Total Liabilities	\$16,647,379				
0950 Deferred Inflows of Resources	1,809,120				
Fund Balances					
0810 Nonspendable Fund Balance	42,216				
0820 Restricted Fund Balance					
0830 Committed Fund Balance	11,346,496				
0840 Assigned Fund Balance	6,984				
0850 Unassigned Fund Balance	9,960,761				
Total Fund Balances	\$21,356,457				
Total Liabilities, Deferred Inflows Of Resources And Fund Balances	\$39,812,956				

LEA : 113364503 Manheim Township SD

Printed 10/31/2024 9:20:26 AM

Amounts Expressed in Whole Dollars	<u>Capital Reserve (690.</u> <u>1850)</u> <u>(31)</u>	<u>Capital Reserve (1431)</u> <u>(32)</u>	<u>Other Capital Projects</u> <u>Fund</u> <u>(39)</u>	<u>Debt Service</u> <u>(40)</u>	<u>Permanent</u> <u>(90)</u>
Liabilities And Deferred Inflows Of Resources And Fund Balances					
Liabilities					
0400 Due to Other Funds					
0411 Due to Other Governments					
0412 Due to Primary Government					
0413 Due to Component Unit					
0420 Accounts Payable			758,462		
0430 Contracts Payable					
0440 Current Portion of Long-Term Debt					
0450 Short-Term Payables					
0461 Accrued Salaries and Benefits					
0462 Payroll Deductions and Withholding					
0480 Unearned Revenues					
0490 Other Current Liabilities					
Total Liabilities			\$758,462		
0950 Deferred Inflows of Resources					
Fund Balances					
0810 Nonspendable Fund Balance					
0820 Restricted Fund Balance		13,255,398	9,411,194		
0830 Committed Fund Balance					
0840 Assigned Fund Balance					
0850 Unassigned Fund Balance					
Total Fund Balances		\$13,255,398	\$9,411,194		
Total Liabilities, Deferred Inflows Of Resources And Fund Balances		\$13,255,398	\$10,169,656		

Amounts Expressed in Whole Dollars

Total Governmental Funds

Liabilities And Deferred Inflows Of Resources And Fund Balances

Liabilities

0400 Due to Other Funds	2,868,941
0411 Due to Other Governments	222,751
0412 Due to Primary Government	
0413 Due to Component Unit	
0420 Accounts Payable	1,494,825
0430 Contracts Payable	
0440 Current Portion of Long-Term Debt	
0450 Short-Term Payables	
0461 Accrued Salaries and Benefits	11,997,329
0462 Payroll Deductions and Withholding	618,077
0480 Unearned Revenues	65,276
0490 Other Current Liabilities	138,642

Total Liabilities \$17,405,841

0950 Deferred Inflows of Resources	1,809,120
------------------------------------	-----------

Fund Balances

0810 Nonspendable Fund Balance	42,216
0820 Restricted Fund Balance	22,666,592
0830 Committed Fund Balance	11,346,496
0840 Assigned Fund Balance	6,984
0850 Unassigned Fund Balance	9,960,761

Total Fund Balances \$44,023,049

Total Liabilities, Deferred Inflows Of Resources And Fund Balances \$63,238,010

Amounts Expressed in Whole Dollars	<u>General Fund</u> <u>(10)</u>	<u>Student Sponsored</u> <u>Activity Fund</u> <u>(21)</u>	<u>Public Purpose Trust</u> <u>(27)</u>	<u>Other Compt Approved</u> <u>(28)</u>	<u>Athletic / Activity</u> <u>(29)</u>
Revenues					
6000 Revenue from Local Sources	92,295,105				
7000 Revenue from State Sources	25,707,315				
8000 Revenue from Federal Sources	958,560				
Total Revenues	\$118,960,980				
Expenditures					
1000 Instruction	64,115,053				
2000 Support Services	35,216,861				
3000 Operation of Non-Instructional Services	1,890,391				
4000 Facilities Acquisition, Construction and Improvement Services	44,040				
5110 Debt Service	13,722,692				
5130 Refund of Prior Year Revenues / Receipts					
5140 Leases and Other Right-to-Use Arrangements	450,102				
Total Expenditures	\$115,439,139				
Excess (Deficiency) Of Revenues Over Expenditures	\$3,521,841				
Other Financing Sources (Uses)					
9110 Face Value of Bonds Issued					
9120 Proceeds from Refunding of Bonds					
9130 Bond Premiums					
9200 Proceeds from Extended Term Financing, Leases, and Other Right-to-Use Arrangements	321,861				
9300 Interfund Transfers - IN					
9400 Sale of or Compensation for Loss of Fixed Assets	18,105				
9710 Transfers from Component Units					
9720 Transfers from Primary Governments					
9910 Other Financing Sources Not Listed in the 9000 Series					
9990 Insurance Recoveries	97,469				
5120 Debt Service – Refunded Bonds					
5150 Bond Discounts					
5200 Interfund Transfers – Out	4,303,428				
5300 Transfers Out to Component Units/Primary Governments					
Total Other Financing Sources (Uses)	(\$3,865,993)				

Amounts Expressed in Whole Dollars	<u>Capital Reserve (690.1850)</u> <u>(31)</u>	<u>Capital Reserve (1431)</u> <u>(32)</u>	<u>Other Capital Projects</u> <u>Fund</u> <u>(39)</u>	<u>Debt Service</u> <u>(40)</u>	<u>Permanent</u> <u>(90)</u>
Revenues					
6000 Revenue from Local Sources		444,953	535,999		
7000 Revenue from State Sources					
8000 Revenue from Federal Sources					
Total Revenues		\$444,953	\$535,999		
Expenditures					
1000 Instruction					
2000 Support Services		1,262	530		
3000 Operation of Non-Instructional Services					
4000 Facilities Acquisition, Construction and Improvement Services		836,155	1,291,206		
5110 Debt Service					
5130 Refund of Prior Year Revenues / Receipts					
5140 Leases and Other Right-to-Use Arrangements					
Total Expenditures		\$837,417	\$1,291,736		
Excess (Deficiency) Of Revenues Over Expenditures		(\$392,464)	(\$755,737)		
Other Financing Sources (Uses)					
9110 Face Value of Bonds Issued					
9120 Proceeds from Refunding of Bonds					
9130 Bond Premiums					
9200 Proceeds from Extended Term Financing, Leases, and Other Right-to-Use Arrangements					
9300 Interfund Transfers - IN		4,303,428			
9400 Sale of or Compensation for Loss of Fixed Assets					
9710 Transfers from Component Units					
9720 Transfers from Primary Governments					
9910 Other Financing Sources Not Listed in the 9000 Series					
9990 Insurance Recoveries					
5120 Debt Service – Refunded Bonds					
5150 Bond Discounts					
5200 Interfund Transfers – Out					
5300 Transfers Out to Component Units/Primary Governments					
Total Other Financing Sources (Uses)		\$4,303,428			

Amounts Expressed in Whole Dollars	<u>Total Governmental Funds</u>
Revenues	
6000 Revenue from Local Sources	93,276,057
7000 Revenue from State Sources	25,707,315
8000 Revenue from Federal Sources	958,560
Total Revenues	\$119,941,932
Expenditures	
1000 Instruction	64,115,053
2000 Support Services	35,218,653
3000 Operation of Non-Instructional Services	1,890,391
4000 Facilities Acquisition, Construction and Improvement Services	2,171,401
5110 Debt Service	13,722,692
5130 Refund of Prior Year Revenues / Receipts	
5140 Leases and Other Right-to-Use Arrangements	450,102
Total Expenditures	\$117,568,292
Excess (Deficiency) Of Revenues Over Expenditures	\$2,373,640
Other Financing Sources (Uses)	
9110 Face Value of Bonds Issued	
9120 Proceeds from Refunding of Bonds	
9130 Bond Premiums	
9200 Proceeds from Extended Term Financing, Leases, and Other Right-to-Use Arrangements	321,861
9300 Interfund Transfers - IN	4,303,428
9400 Sale of or Compensation for Loss of Fixed Assets	18,105
9710 Transfers from Component Units	
9720 Transfers from Primary Governments	
9910 Other Financing Sources Not Listed in the 9000 Series	
9990 Insurance Recoveries	97,469
5120 Debt Service – Refunded Bonds	
5150 Bond Discounts	
5200 Interfund Transfers – Out	4,303,428
5300 Transfers Out to Component Units/Primary Governments	
Total Other Financing Sources (Uses)	\$437,435

Amounts Expressed in Whole Dollars	<u>General Fund</u> <u>(10)</u>	<u>Student Sponsored</u> <u>Activity Fund</u> <u>(21)</u>	<u>Public Purpose Trust</u> <u>(27)</u>	<u>Other Compt Approved</u> <u>(28)</u>	<u>Athletic / Activity</u> <u>(29)</u>
Special And Extraordinary Items					
9920 Special Items – Gains					
9930 Extraordinary Items – Gains					
5520 Special Items – Losses					
5530 Extraordinary Items – Losses					
Net Change In Fund Balances	(\$344,152)				
Fund Balance					
0001 Fund Balance - Beginning of Fiscal Year	21,700,609				
Fund Balance - End Of Year	\$21,356,457				

Amounts Expressed in Whole Dollars	<u>Capital Reserve (690.</u> <u>1850)</u> <u>(31)</u>	<u>Capital Reserve (1431)</u> <u>(32)</u>	<u>Other Capital Projects</u> <u>Fund</u> <u>(39)</u>	<u>Debt Service</u> <u>(40)</u>	<u>Permanent</u> <u>(90)</u>
Special And Extraordinary Items					
9920 Special Items – Gains					
9930 Extraordinary Items – Gains					
5520 Special Items – Losses					
5530 Extraordinary Items – Losses					
Net Change In Fund Balances		\$3,910,964	(\$755,737)		
Fund Balance					
0001 Fund Balance - Beginning of Fiscal Year		9,344,434	10,166,931		
Fund Balance - End Of Year		\$13,255,398	\$9,411,194		

Amounts Expressed in Whole Dollars	<u>Total Governmental Funds</u>
Special And Extraordinary Items	
9920 Special Items – Gains	
9930 Extraordinary Items – Gains	
5520 Special Items – Losses	
5530 Extraordinary Items – Losses	
Net Change In Fund Balances	\$2,811,075
Fund Balance	
0001 Fund Balance - Beginning of Fiscal Year	41,211,974
Fund Balance - End Of Year	\$44,023,049

Amounts Expressed in Whole Dollars	<u>Food Service</u> <u>(51)</u>	<u>Child Care</u> <u>Operations</u> <u>(52)</u>	<u>Other Enterprise</u> <u>(58)</u>	<u>TOTAL</u>	<u>Internal Service</u> <u>(60)</u>
Assets And Deferred Outflows Of Resources					
Current Assets					
0100 Cash and Cash Equivalents	2,937,066			2,937,066	1,155,043
0110 Investments					
0130 Due From Other Funds	10,437			10,437	858,504
0141 Due From Other Governments					37,208
0142 State Revenue Receivable	3,437			3,437	
0143 Federal Revenue Receivable	6,409			6,409	
0146 Due from Primary Government					
0147 Due from Component Unit					
0150 Other Receivables	1,579			1,579	
0170 Inventories	69,494			69,494	
0180 Prepaid Expenses (Expenditures)					
0190 Other Current Assets					
Total Current Assets	\$3,028,422			\$3,028,422	\$2,050,755
Noncurrent Assets					
0211 Land					
0212 Site Improvements (Net)					
0220 Buildings and Building Improvements (Net)					
0230 Tangible Property and Intangible Right-To-Use Assets (Net)	257,871			257,871	
0250 Construction in Progress	513,439			513,439	
0260 Long Term Prepayments					
0290 Other Noncurrent Assets					
Total Noncurrent Assets	\$771,310			\$771,310	
0910 Deferred Outflows of Resources	461,818			461,818	
Total Assets And Deferred Outflows Of Resources	\$4,261,550			\$4,261,550	\$2,050,755

Amounts Expressed in Whole Dollars	<u>Food Service</u> <u>(51)</u>	<u>Child Care</u> <u>Operations</u> <u>(52)</u>	<u>Other Enterprise</u> <u>(58)</u>	<u>TOTAL</u>	<u>Internal Service</u> <u>(60)</u>
Liabilities And Deferred Inflows Of Resources And Net Position					
Current Liabilities					
0400 Due to Other Funds					
0411 Due to Other Governments					
0413 Due to Component Unit					
0420 Accounts Payable	426,373			426,373	746,491
0430 Contracts Payable					
0440 Current Portion of Long-Term Debt	9,677			9,677	
0450 Short-Term Payables					
0461 Accrued Salaries and Benefits	68,176			68,176	
0462 Payroll Deductions and Withholding					
0480 Unearned Revenues	64,686			64,686	23,444
0490 Other Current Liabilities	236			236	
Total Current Liabilities	\$569,148			\$569,148	\$769,935
Noncurrent Liabilities					
0510 Bonds Payable					
0520 Extended-Term Financing Agreements Payable					
0530 Lease and Other Right-To-Use Obligations	34,311			34,311	
0540 Accumulated Compensated Absences					
0550 Authority Lease Obligations					
0560 Other Post-Employment Benefits (OPEB)	137,304			137,304	
0570 Net Pension Liability	2,547,000			2,547,000	
0599 Other Noncurrent Liabilities					
Total Noncurrent Liabilities	\$2,718,615			\$2,718,615	
Total Liabilities	\$3,287,763			\$3,287,763	\$769,935
0950 Deferred Inflows of Resources	112,009			112,009	
Net Position					
0791 Net Investment in Capital Assets	728,355			728,355	
0008 Restricted Net Position (0792 – 0798)					1,280,820
0799 Unrestricted Net Position	133,423			133,423	
Total Net Position	\$861,778			\$861,778	\$1,280,820
Total Liabilities And Deferred Inflows Of Resources And Net Position	\$4,261,550			\$4,261,550	\$2,050,755

Amounts Expressed in Whole Dollars	<u>Food Service</u> <u>(51)</u>	<u>Child Care Operations</u> <u>(52)</u>	<u>Other Enterprise</u> <u>(58)</u>	<u>TOTAL</u>	<u>Internal Service</u> <u>(60)</u>
Operating Revenues					
6600 Food Service Revenue	1,391,755			1,391,755	
0071 Charges for Services	2,654			2,654	10,041,094
0072 Other Operating Revenue					
Total Operating Revenues	\$1,394,409			\$1,394,409	\$10,041,094
Operating Expenses					
100 Personnel Services – Salaries	1,156,665			1,156,665	
200 Personnel Services – Employee Benefits	685,282			685,282	9,574,577
300 Purchased Professional and Technical Services	1,583			1,583	
400 Purchased Property Services	72,552			72,552	
500 Other Purchased Services	8,158			8,158	
600 Supplies	1,942,554			1,942,554	
740 Depreciation	75,647			75,647	
770 Amortization Expense					
810 Dues and Fees	2,831			2,831	4,656
880 Refunds of Prior Years' Receipts					
890 Miscellaneous Expenditures					
Total Operating Expenses	\$3,945,272			\$3,945,272	\$9,579,233
Operating Income (Loss)	(\$2,550,863)			(\$2,550,863)	\$461,861
Non Operating Revenues (Expenses)					
6500 Earnings on Investments	88,107			88,107	27,350
6830 Federal Revenue from Intermediary Sources					
6920 Contributions and Donations from Private Sources	10,750			10,750	
6930 Gains or Losses on Sale of Fixed Assets					
6991 Refunds of a Prior Year Expenditure					
7000 Revenue from State Sources	666,440			666,440	
8000 Revenue from Federal Sources	2,231,958			2,231,958	
9990 Insurance Recoveries					
820 Claims and Judgments Against the LEA					
830 Interest	2,723			2,723	
TOTAL Non Operating Revenues (Expenses)	\$2,994,532			\$2,994,532	\$27,350
Income (Loss) Before Contributions And Transfers	\$443,669			\$443,669	\$489,211

Amounts Expressed in Whole Dollars	<u>Food Service</u> <u>(51)</u>	<u>Child Care Operations</u> <u>(52)</u>	<u>Other Enterprise</u> <u>(58)</u>	<u>TOTAL</u>	<u>Internal Service</u> <u>(60)</u>
Contributions, Transfers, and Special and Extraordinary Items					
5200 Interfund Transfers – Out					
5300 Transfers Out to Component Units/Primary Governments					
5520 Special Items – Losses					
5530 Extraordinary Items – Losses					
9300 Interfund Transfers - IN					
9500 Capital Contributions					
9700 Transfers IN From Component Units/Primary Governments					
9920 Special Items – Gains					
9930 Extraordinary Items – Gains					
Change In Net Position	\$443,669			\$443,669	\$489,211
0002 Net Position - Beginning of Fiscal Year	418,109			418,109	791,609
0003 Accounting Changes / Residual Equity Transfers					
Net Position - End Of Year	\$861,778			\$861,778	\$1,280,820

LEA : 113364503 Manheim Township SD

Printed 10/31/2024 9:21:53 AM

Amounts Expressed in Whole Dollars	<u>Food Service</u> <u>(51)</u>	<u>Child Care Operations</u> <u>(52)</u>	<u>Other Enterprise</u> <u>(58)</u>	<u>TOTAL</u>	<u>Internal Service(60)</u>
Cash Flows From Operating Activities					
0011 Cash Receipts From Users	1,386,581			1,386,581	
0012 Cash Receipts From Assessments Made to Other Funds					10,196,487
0013 Cash Receipts From Earnings on Investments					
0014 Cash Receipts From Other Operating Revenue	2,654			2,654	
0015 Cash Payments To Employees For Services	1,953,121			1,953,121	
0016 Cash Payments For Insurance Claims					9,765,724
0017 Cash Payments To Suppliers For Goods and Services	1,264,340			1,264,340	4,656
0018 Cash Payments For Other Operating Expenses					
Net Cash Provided By (Used For) Operating Activities	(\$1,828,226)			(\$1,828,226)	\$426,107
Cash Flows From Non-Capital Financing Activities					
0021 Receipts From Local Sources - 6000	10,912			10,912	
0022 Receipts From State Sources - 7000	667,107			667,107	
0023 Receipts From Federal Sources -8000	1,885,016			1,885,016	
0024 Notes and Loans Received (Repaid)					
0025 Interest Paid on Notes/Loans - 5100-830					
0026 Operating Transfers In (Out)/Residual Equity Trans					
0027 Operating Transfers In (Out) Primary Government / Comp Unit					
0028 Receipts From Refund of Prior Year Expenditures - 6991					
0029 Special and Extraordinary Gains (losses)					
0030 Receipts from Insurance Recoveries -9990					
Net Cash Prov By (Used for) Non-Capital Financing Activities	\$2,563,035			\$2,563,035	
Cash Flows From Capital and Related Financing Activities					
0031 Payments For Fac Acq, Const, and Imp - 4000	(600,882)			(600,882)	
0032 Proceeds from Disposal of Capital Assets					
0033 Proceeds From Extended Term Financing - 9200					
0034 Principal Paid on Financing Agreements					
0035 Interest Paid on Financing Agreements - 5100-830	(2,723)			(2,723)	
0036 (Inc) Dec in Contributed Capital					
Net Cash Prov By (Used for) Capital and Related Financing Activities	(\$603,605)			(\$603,605)	
Cash Flows From Investing Activities					
0041 Earnings on Investments - 6500	88,107			88,107	27,350
0042 Purchase of Inv Securities / Deposits to Inv Pools					
0043 Receipts From Investment Pool Withdrawals					
0044 Proceeds from Sale and Maturity of Inv Securities					

LEA : 113364503 Manheim Township SD

Printed 10/31/2024 9:21:53 AM

0045 Loans Received (Paid)

Net Cash Prov By (Used for) Investing Activities	\$88,107	\$88,107	\$27,350
---	-----------------	-----------------	-----------------

	<u>Food Service</u> <u>(51)</u>	<u>Child Care Operations</u> <u>(52)</u>	<u>Other Enterprise</u> <u>(58)</u>	<u>TOTAL</u>	<u>Internal Service</u> <u>(60)</u>
Net Increase (Decrease) in Cash Flows	219,311			219,311	453,457
0004 Cash and Cash Equivalents Beginning of Year	2,717,755			2,717,755	701,586
Cash and Cash Equivalents at Year End	\$2,937,066			\$2,937,066	\$1,155,043
<hr/>					
Reconciliation of Operating Income (Loss) To Net Cash Provided by (Used For) Operating Activities					
0005 Operating Income (Loss) per REP	(2,550,863)			(2,550,863)	461,861
Adjustments					
0051 Depreciation and Net Amortization	75,647			75,647	
0052 Provision for Uncollectible Accounts					
0053 Other Adjustments	347,006			347,006	
Effect of Changes in Assets, Liabilities, Deferred Outflows and Deferred Inflows					
0054 (Inc) Dec In Accounts Receivable (0120-0150)	1,127			1,127	149,759
0055 Advances to Other Funds					
0056 (Inc) Dec in Inventories (0170)	4,112			4,112	
0057 (Inc) Dec in Prepaid Expenses (0180)					
0058 (Inc) Dec in Other Current or Noncurrent Assets					
0064 Deferred Outflows (0910)	(32,628)			(32,628)	
0059 Inc (Dec) in Accounts Payable (0400-0450)	419,507			419,507	(191,147)
0060 Inc (Dec) in Accrued Salaries/Benefits (0461)	(4,911)			(4,911)	
0065 Inc (Dec) in Net Pension Liabilities (0570)	(9,000)			(9,000)	
0066 Inc (Dec) in Other Postemp Benefit Oblig (0560)	(5,516)			(5,516)	
0061 Inc (Dec) in Payroll Deductions/Withholding (0462)					
0062 Inc (Dec) in Unearned Revenue (0480)	(5,010)			(5,010)	5,634
0063 Inc (Dec) in Other Current or Noncurrent Liabilities	(8,578)			(8,578)	
0067 Deferred Inflows (0950)	(59,119)			(59,119)	
Total Adjustments	\$722,637			\$722,637	(\$35,754)
Cash Provided By (Used for) Total	(\$1,828,226)			(\$1,828,226)	\$426,107

COMBINED STATEMENT OF CASH FLOWS
SCHEDULE OF NONCASH INVESTING, CAPITAL, AND FINANCING ACTIVITIES

Explanation of Transaction and Balance Sheet Effect	Amount
Right-to-use asset acquired through lease payable	52,598
USDA Donated Commodities	347,006
Total	\$399,604

LEA : 113364503 Manheim Township SD

Printed 10/31/2024 9:21:55 AM

Amounts Expressed in Whole Dollars

	<u>Private Purpose Trust</u> <u>(71)</u>	<u>Investment Trust</u> <u>(72)</u>	<u>Pension Trust</u> <u>(73)</u>	<u>Student Activity Custodial</u> <u>(81)</u>
Assets And Deferred Outflows Of Resources				
Assets				
0100 Cash and Cash Equivalents	211,991			168,577
0110 Investments	8,601			
0130 Due From Other Funds				
0140 Due from Other Governments, Primary Government and Component Units				
0150 Other Receivables				
0170 Inventories				
0180 Prepaid Expenses (Expenditures)				
0190 Other Current Assets				
0220 Buildings and Building Improvements (Net)				
0230 Tangible Property and Intangible Right-To-Use Assets (Net)				
Total Assets	\$220,592			\$168,577
0910 Deferred Outflows of Resources				
Total Assets And Deferred Outflows Of Resources	\$220,592			\$168,577

LEA : 113364503 Manheim Township SD

Printed 10/31/2024 9:21:55 AM

Amounts Expressed in Whole Dollars	<u>Other Custodial</u> (89)	<u>Fiduciary Component Units</u> (98)	<u>Total Fiduciary Funds</u>
Assets And Deferred Outflows Of Resources			
Assets			
0100 Cash and Cash Equivalents			380,568
0110 Investments			8,601
0130 Due From Other Funds			
0140 Due from Other Governments, Primary Government and Component Units			
0150 Other Receivables			
0170 Inventories			
0180 Prepaid Expenses (Expenditures)			
0190 Other Current Assets			
0220 Buildings and Building Improvements (Net)			
0230 Tangible Property and Intangible Right-To-Use Assets (Net)			
Total Assets			\$389,169
0910 Deferred Outflows of Resources			
Total Assets And Deferred Outflows Of Resources			\$389,169

LEA : 113364503 Manheim Township SD

Printed 10/31/2024 9:21:55 AM

Amounts Expressed in Whole Dollars	<u>Private Purpose Trust</u> (71)	<u>Investment Trust</u> (72)	<u>Pension Trust</u> (73)	<u>Student Activity Custodial</u> (81)
Liabilities, Deferred Inflows Of Resources And Net Position				
Liabilities				
0400 Due to Other Funds				
0410 Due to Other Governments, Primary Government and Component Units				
0420 Accounts Payable				131
0430 Contracts Payable				
0450 Short-Term Payables				
0460 Payroll Accruals and Withholdings				
0480 Unearned Revenues				
0490 Other Current Liabilities				
Total Liabilities				\$131
0950 Deferred Inflows of Resources				
Net Position				
0791 Net Investment in Capital Assets				
0009 Restricted Net Position (0792 – 0798)	220,592			168,446
0799 Unrestricted Net Position				
Total Net Position	\$220,592			\$168,446
Total Liabilities, Deferred Inflows Of Resources And Net Position	\$220,592			\$168,577

LEA : 113364503 Manheim Township SD

Printed 10/31/2024 9:21:55 AM

Amounts Expressed in Whole Dollars	<u>Other Custodial</u> <u>(89)</u>	<u>Fiduciary Component Units</u> <u>(98)</u>	<u>Total Fiduciary Funds</u>
Liabilities, Deferred Inflows Of Resources And Net Position			
Liabilities			
0400 Due to Other Funds			
0410 Due to Other Governments, Primary Government and Component Units			
0420 Accounts Payable			131
0430 Contracts Payable			
0450 Short-Term Payables			
0460 Payroll Accruals and Withholdings			
0480 Unearned Revenues			
0490 Other Current Liabilities			
Total Liabilities			\$131
0950 Deferred Inflows of Resources			
Net Position			
0791 Net Investment in Capital Assets			
0009 Restricted Net Position (0792 – 0798)			389,038
0799 Unrestricted Net Position			
Total Net Position			\$389,038
Total Liabilities, Deferred Inflows Of Resources And Net Position			\$389,169

Amounts Expressed in Whole Dollars	<u>Private Purpose Trust</u> <u>(71)</u>	<u>Investment Trust</u> <u>(72)</u>	<u>Pension Trust</u> <u>(73)</u>	<u>Student Activity</u> <u>Custodial</u> <u>(81)</u>	<u>Other Custodial</u> <u>(89)</u>	<u>Fiduciary Component</u> <u>Units</u> <u>(98)</u>
Additions						
0091 Gifts and Contributions	36,369					
0095 Net Investment Earnings	6,727			4,581		
0092 Other Additions				201,534		
Deductions						
0093 Scholarships Awarded	21,523					
0094 Other Deductions				198,722		
Change In Net Position	\$21,573			\$7,393		
0006 Net Position – Beginning of Fiscal Year	199,019			161,053		
0007 Net Position Held in Trust for Pension Benefits						
Net Position - End of Fiscal Year	\$220,592			\$168,446		

Amounts Expressed in Whole Dollars	<u>Total Fiduciary Funds</u>
Additions	
0091 Gifts and Contributions	36,369
0095 Net Investment Earnings	11,308
0092 Other Additions	201,534
Deductions	
0093 Scholarships Awarded	21,523
0094 Other Deductions	198,722
Change In Net Position	\$28,966
0006 Net Position – Beginning of Fiscal Year	360,072
0007 Net Position Held in Trust for Pension Benefits	
Net Position - End of Fiscal Year	\$389,038

	<u>Revenue Reported In Current Year</u>	<u>Current Year Tax Accrual</u>	<u>Prior Year Tax Accrual</u>	<u>Taxes Collected In Current Year</u>
<u>Revenue from Local Sources</u>				
6111 Current Real Estate Taxes	73,776,533.77			73,776,533.77
6112 Interim Real Estate Taxes	352,765.83	32,612.88	97,619.03	417,771.98
6113 Public Utility Realty Taxes	72,990.60			72,990.60
6114 Payments in Lieu of Current Taxes - State / Local	277,020.42			277,020.42
6143 Current Act 511 Local Services Taxes	310,977.81	80,261.35	75,915.45	306,631.91
6151 Current Act 511 Earned Income Taxes	10,047,796.78	1,793,627.70	1,744,932.85	9,999,101.93
6153 Current Act 511 Real Estate Transfer Taxes	1,665,262.78	364,520.90	152,844.16	1,453,586.04
6411 Delinquent Real Estate Taxes	329,842.16	116,349.49	56,609.29	270,101.96
6500 Earnings on Investments	2,836,429.24			
6700 Revenues from LEA Activities	74,003.71			
6831 Federal Revenue Received from Other Pennsylvania Public LEAs	76,393.04			
6832 Federal IDEA Revenue Received as Pass Through	1,164,667.00			
6833 Federal ARP Act IDEA Revenue Received as Pass Through	98,083.43			
6839 Federal Revenue Received from Other Sources	16,006.45			
6910 Rentals	337,439.99			
6920 Contributions and Donations from Private Sources	286,024.10			
6942 Summer School Tuition	67,173.50			
6944 Receipts from Other LEAs in Pennsylvania - Education	175,113.83			
6961 Transportation Services Provided Other Pennsylvania LEAs	37,403.40			
6991 Refunds of a Prior Year Expenditure	189,223.38			
6999 Other Revenues Not Specified Above	103,953.36			
TOTAL Revenue from Local Sources	\$92,295,104.58	\$2,387,372.32	\$2,127,920.78	\$86,573,738.61

**Revenue Reported
In Current Year**

Revenue from State Sources

7111 Basic Education Funding-Formula	8,834,382.44		
7160 Tuition for Orphans Subsidy	23,533.94		
7250 Migratory Children	1,352.00		
7271 Special Education funds for School-Aged Pupils	2,788,981.79		
7311 Pupil Transportation Subsidy	1,223,570.17		
7312 Nonpublic and Charter School Pupil Transportation Subsidy	128,975.00		
7320 Rental and Sinking Fund Payments / Building Reimbursement Subsidy	918,231.10		
7330 Health Services (Medical, Dental, Nurse, Act 25)	128,058.64		
7340 State Property Tax Reduction Allocation	1,417,227.27		
7362 School Mental Health & Safety and Security Grants	100,716.26		
7505 Ready to Learn Block Grant	474,037.00		
7810 State Share of Social Security and Medicare Taxes	1,729,058.60		
7820 State Share of Retirement Contributions	7,939,191.05		
TOTAL Revenue from State Sources	\$25,707,315.26		

	Revenue Reported In Current Year			
Revenue from Federal Sources				
8514 Title I - Improving the Academic Achievement of the Disadvantaged	595,925.17			
8515 Title II - Preparing, Training, and Recruiting High Quality Teachers and Principals	126,169.06			
8516 Title III - Language Instruction for English Learners and Immigrant Students	52,885.00			
8517 Title IV - 21st Century Schools	49,164.63			
8751 ARP ESSER Learning Loss	52,599.03			
8752 ARP ESSER Summer Programs	7,202.12			
8753 ARP ESSER Afterschool Programs	18,147.71			
8754 ARP ESSER Homeless Children and Youth Funds	55,078.00			
8820 Medical Assistance Reimbursement for Administrative Claiming (Quarterly) Program	1,389.27			
TOTAL Revenue from Federal Sources	\$958,559.99			

**Revenue Reported
In Current Year**

Other Financing Sources

9220 Leases and Other Right-to-Use Arrangements	321,861.00			
9400 Sale of or Compensation for Loss of Fixed Assets	18,105.00			
9990 Insurance Recoveries	97,468.90			
TOTAL Other Financing Sources	\$437,434.90			
TOTAL FROM ALL SOURCES	\$119,398,414.73	\$2,387,372.32	\$2,127,920.78	\$86,573,738.61

LEA : 113364503 Manheim Township SD

Printed 10/31/2024 9:22:03 AM

	<u>General Fund (10)</u>	<u>Student Sponsored Activity Fund (21)</u>	<u>Public Purpose Trust (27)</u>	<u>Other Compt Approved (28)</u>	<u>Athletic / Activity (29)</u>	<u>Capital Reserve (690, 1850) (31)</u>
6000 Revenue from Local Sources						
6111 Current Real Estate Taxes	73,776,533.77					
6112 Interim Real Estate Taxes	352,765.83					
6113 Public Utility Realty Taxes	72,990.60					
6114 Payments in Lieu of Current Taxes - State / Local	277,020.42					
6143 Current Act 511 Local Services Taxes	310,977.81					
6151 Current Act 511 Earned Income Taxes	10,047,796.78					
6153 Current Act 511 Real Estate Transfer Taxes	1,665,262.78					
6411 Delinquent Real Estate Taxes	329,842.16					
6500 Earnings on Investments	2,836,429.24					
6700 Revenues from LEA Activities	74,003.71					
6831 Federal Revenue Received from Other Pennsylvania Public LEAs	76,393.04					
6832 Federal IDEA Revenue Received as Pass Through	1,164,667.00					
6833 Federal ARP Act IDEA Revenue Received as Pass Through	98,083.43					
6839 Federal Revenue Received from Other Sources	16,006.45					
6910 Rentals	337,439.99					
6920 Contributions and Donations from Private Sources	286,024.10					
6942 Summer School Tuition	67,173.50					
6944 Receipts from Other LEAs in Pennsylvania - Education	175,113.83					
6961 Transportation Services Provided Other Pennsylvania LEAs	37,403.40					
6991 Refunds of a Prior Year Expenditure	189,223.38					
6999 Other Revenues Not Specified Above	103,953.36					
6000 Total Revenue from Local Sources	\$92,295,104.58					
7000 Revenue from State Sources						
7111 Basic Education Funding-Formula	8,834,382.44					
7160 Tuition for Orphans Subsidy	23,533.94					
7250 Migratory Children	1,352.00					
7271 Special Education funds for School-Aged Pupils	2,788,981.79					
7311 Pupil Transportation Subsidy	1,223,570.17					
7312 Nonpublic and Charter School Pupil Transportation Subsidy	128,975.00					
7320 Rental and Sinking Fund Payments / Building Reimbursement Subsidy	918,231.10					
7330 Health Services (Medical, Dental, Nurse, Act 25)	128,058.64					
7340 State Property Tax Reduction Allocation	1,417,227.27					
7362 School Mental Health & Safety and Security Grants	100,716.26					
7505 Ready to Learn Block Grant	474,037.00					
7810 State Share of Social Security and Medicare Taxes	1,729,058.60					

LEA : 113364503 Manheim Township SD

Printed 10/31/2024 9:22:03 AM

	<u>Capital Reserve</u> <u>(1431) (32)</u>	<u>Other Capital</u> <u>Projects Fund (39)</u>	<u>Debt Service (40)</u>	<u>Permanent (90)</u>	<u>Total</u>
6000 Revenue from Local Sources					
6111 Current Real Estate Taxes					73,776,533.77
6112 Interim Real Estate Taxes					352,765.83
6113 Public Utility Realty Taxes					72,990.60
6114 Payments in Lieu of Current Taxes - State / Local					277,020.42
6143 Current Act 511 Local Services Taxes					310,977.81
6151 Current Act 511 Earned Income Taxes					10,047,796.78
6153 Current Act 511 Real Estate Transfer Taxes					1,665,262.78
6411 Delinquent Real Estate Taxes					329,842.16
6500 Earnings on Investments	444,953.48	535,998.62			3,817,381.34
6700 Revenues from LEA Activities					74,003.71
6831 Federal Revenue Received from Other Pennsylvania Public LEAs					76,393.04
6832 Federal IDEA Revenue Received as Pass Through					1,164,667.00
6833 Federal ARP Act IDEA Revenue Received as Pass Through					98,083.43
6839 Federal Revenue Received from Other Sources					16,006.45
6910 Rentals					337,439.99
6920 Contributions and Donations from Private Sources					286,024.10
6942 Summer School Tuition					67,173.50
6944 Receipts from Other LEAs in Pennsylvania - Education					175,113.83
6961 Transportation Services Provided Other Pennsylvania LEAs					37,403.40
6991 Refunds of a Prior Year Expenditure					189,223.38
6999 Other Revenues Not Specified Above					103,953.36
6000 Total Revenue from Local Sources	\$444,953.48	\$535,998.62			\$93,276,056.68
7000 Revenue from State Sources					
7111 Basic Education Funding-Formula					8,834,382.44
7160 Tuition for Orphans Subsidy					23,533.94
7250 Migratory Children					1,352.00
7271 Special Education funds for School-Aged Pupils					2,788,981.79
7311 Pupil Transportation Subsidy					1,223,570.17
7312 Nonpublic and Charter School Pupil Transportation Subsidy					128,975.00
7320 Rental and Sinking Fund Payments / Building Reimbursement Subsidy					918,231.10
7330 Health Services (Medical, Dental, Nurse, Act 25)					128,058.64
7340 State Property Tax Reduction Allocation					1,417,227.27
7362 School Mental Health & Safety and Security Grants					100,716.26
7505 Ready to Learn Block Grant					474,037.00
7810 State Share of Social Security and Medicare Taxes					1,729,058.60

	<u>General Fund (10)</u>	<u>Student Sponsored Activity Fund (21)</u>	<u>Public Purpose Trust (27)</u>	<u>Other Compt Approved (28)</u>	<u>Athletic / Activity (29)</u>	<u>Capital Reserve (690.1850) (31)</u>
7000 Revenue from State Sources						
7820 State Share of Retirement Contributions	7,939,191.05					
7000 Total Revenue from State Sources	\$25,707,315.26					
8000 Revenue from Federal Sources						
8514 Title I - Improving the Academic Achievement of the Disadvantaged	595,925.17					
8515 Title II - Preparing, Training, and Recruiting High Quality Teachers and Principals	126,169.06					
8516 Title III - Language Instruction for English Learners and Immigrant Students	52,885.00					
8517 Title IV - 21st Century Schools	49,164.63					
8751 ARP ESSER Learning Loss	52,599.03					
8752 ARP ESSER Summer Programs	7,202.12					
8753 ARP ESSER Afterschool Programs	18,147.71					
8754 ARP ESSER Homeless Children and Youth Funds	55,078.00					
8820 Medical Assistance Reimbursement for Administrative Claiming (Quarterly) Program	1,389.27					
8000 Total Revenue from Federal Sources	\$958,559.99					
9000 Other Financing Sources						
9220 Leases and Other Right-to-Use Arrangements	321,861.00					
9310 General Fund Transfers						
9400 Sale of or Compensation for Loss of Fixed Assets	18,105.00					
9990 Insurance Recoveries	97,468.90					
9000 Total Other Financing Sources	\$437,434.90					
Total From All Sources	\$119,398,414.73					

	<u>Capital Reserve</u> <u>(1431) (32)</u>	<u>Other Capital</u> <u>Projects Fund (39)</u>	<u>Debt Service (40)</u>	<u>Permanent (90)</u>	<u>Total</u>
7000 Revenue from State Sources					
7820 State Share of Retirement Contributions					7,939,191.05
7000 Total Revenue from State Sources					\$25,707,315.26
8000 Revenue from Federal Sources					
8514 Title I - Improving the Academic Achievement of the Disadvantaged					595,925.17
8515 Title II - Preparing, Training, and Recruiting High Quality Teachers and Principals					126,169.06
8516 Title III - Language Instruction for English Learners and Immigrant Students					52,885.00
8517 Title IV - 21st Century Schools					49,164.63
8751 ARP ESSER Learning Loss					52,599.03
8752 ARP ESSER Summer Programs					7,202.12
8753 ARP ESSER Afterschool Programs					18,147.71
8754 ARP ESSER Homeless Children and Youth Funds					55,078.00
8820 Medical Assistance Reimbursement for Administrative Claiming (Quarterly) Program					1,389.27
8000 Total Revenue from Federal Sources					\$958,559.99
9000 Other Financing Sources					
9220 Leases and Other Right-to-Use Arrangements					321,861.00
9310 General Fund Transfers	4,303,428.00				4,303,428.00
9400 Sale of or Compensation for Loss of Fixed Assets					18,105.00
9990 Insurance Recoveries					97,468.90
9000 Total Other Financing Sources	\$4,303,428.00				\$4,740,862.90
Total From All Sources	\$4,748,381.48	\$535,998.62			\$124,682,794.83

	<u>General Fund (10)</u>	<u>Student Sponsored Activity Fund (21)</u>	<u>Public Purpose Trust (27)</u>	<u>Other Compt Approved (28)</u>	<u>Athletic / Activity (29)</u>	<u>Capital Reserve (690. 1850) (31)</u>
Revenue from Local Sources	92,295,104.58					
Revenue from State Sources	25,707,315.26					
Revenue from Federal Sources	958,559.99					
Other Financing Sources	437,434.90					
Total From All Sources	\$119,398,414.73					

	<u>Capital Reserve (1431)</u> <u>(32)</u>	<u>Other Capital Projects</u> <u>Fund (39)</u>	<u>Debt Service (40)</u>	<u>Permanent (90)</u>	<u>Total</u>
Revenue from Local Sources	444,953.48	535,998.62			93,276,056.68
Revenue from State Sources					25,707,315.26
Revenue from Federal Sources					958,559.99
Other Financing Sources	4,303,428.00				4,740,862.90
Total From All Sources	\$4,748,381.48	\$535,998.62			\$124,682,794.83

General Fund (10)

		<u>Total</u>
1000 Instruction		
100 Personnel Services – Salaries		
100 Personnel Services – Salaries		32,769,897.69
Total Personnel Services – Salaries		\$32,769,897.69
200 Personnel Services – Employee Benefits		
210 Group Insurance – Contracted Provider		87,751.44
220 Social Security Contributions		2,434,878.98
230 PSERS Retirement Contributions		11,119,369.47
250 Unemployment Compensation		516.38
260 Workers' Compensation		278,842.62
270 Group Insurance – Self-Insurance		6,209,283.48
291 Other Retirement Plans		57,350.00
292 Health Savings Accounts		393,673.48
299 All Other Employee Benefits		175.00
Total Personnel Services – Employee Benefits		\$20,581,840.85
300 Purchased Professional and Technical Services		
322 Professional Educational Services – Ius		2,711,948.95
329 Professional Educational Services – Other		2,201,390.17
330 Other Professional Services		82,940.19
340 Technical Services		1,900.00
390 Other Purchased Professional and Technical Services		67,195.01
Total Purchased Professional and Technical Services		\$5,065,374.32
400 Purchased Property Services		
410 Cleaning Services		2,040.00
430 Repairs and Maintenance Services		27,908.92
Total Purchased Property Services		\$29,948.92
500 Other Purchased Services		
510 Student Transportation Services		62,137.90
530 Communications		14,017.56
550 Printing and Binding		18,145.21
561 Tuition To Other School Districts Within the State		192,630.84
562 Tuition To Pennsylvania Charter Schools		1,386,248.12
564 Tuition To Career and Technology Centers		1,287,187.79
567 Tuition To Approved Private Schools (APS) and PA Chartered Schools for the Deaf and Blind		68,215.68
568 Tuition To Private Residential Rehabilitative Institutions (PRRI) [In-State] and Detention Centers		299,768.22
569 Tuition – Other		464,115.80
580 Travel		3,335.91
Total Other Purchased Services		\$3,795,803.03
600 Supplies		
610 General Supplies		878,636.67
630 Food		171.17
640 Books and Periodicals		170,468.38
650 Supplies & Fees – Technology Related		759,499.82
Total Supplies		\$1,808,776.04

General Fund (10)

1000 Instruction	<u>Total</u>
700 <u>Property</u>	
752 Capital Equipment – Original and Additional	32,145.93
Total Property	\$32,145.93
800 <u>Other Objects</u>	
810 Dues and Fees	31,265.72
Total Other Objects	\$31,265.72
Total 1000 Instruction	\$64,115,052.50

General Fund (10)

1100 Regular Programs – Elementary / Secondary

	<u>Elementary</u>	<u>Secondary</u>	<u>Federal</u>	<u>Total</u>
100 Personnel Services – Salaries				
100 Personnel Services – Salaries	14,075,285.34	12,125,403.47	531,005.73	26,731,694.54
Total Personnel Services – Salaries	\$14,075,285.34	\$12,125,403.47	\$531,005.73	\$26,731,694.54
200 Personnel Services – Employee Benefits				
210 Group Insurance – Contracted Provider	37,114.71	39,105.49	589.56	76,809.76
220 Social Security Contributions	1,045,878.48	899,771.59	39,612.35	1,985,262.42
230 PSERS Retirement Contributions	4,781,450.59	4,202,228.39	90,240.26	9,073,919.24
250 Unemployment Compensation		66.68		66.68
260 Workers' Compensation	114,718.80	142,899.11		257,617.91
270 Group Insurance – Self-Insurance	2,670,745.03	2,305,967.59	91,444.94	5,068,157.56
291 Other Retirement Plans	52,350.00	5,000.00		57,350.00
292 Health Savings Accounts	172,278.70	159,026.65	7,794.46	339,099.81
299 All Other Employee Benefits	175.00			175.00
Total Personnel Services – Employee Benefits	\$8,874,711.31	\$7,754,065.50	\$229,681.57	\$16,858,458.38
300 Purchased Professional and Technical Services				
322 Professional Educational Services – Ius		26,637.50		26,637.50
329 Professional Educational Services – Other	514,758.90	606,636.57	17,176.00	1,138,571.47
330 Other Professional Services	14,127.85	12,587.48	13,150.37	39,865.70
340 Technical Services	1,900.00			1,900.00
Total Purchased Professional and Technical Services	\$530,786.75	\$645,861.55	\$30,326.37	\$1,206,974.67
400 Purchased Property Services				
410 Cleaning Services	2,040.00			2,040.00
430 Repairs and Maintenance Services	13,850.65	12,771.27		26,621.92
Total Purchased Property Services	\$15,890.65	\$12,771.27		\$28,661.92
500 Other Purchased Services				
510 Student Transportation Services	24,699.63	18,976.24	15,337.84	59,013.71
530 Communications	6,009.05	8,001.08		14,010.13
550 Printing and Binding	9,435.51	8,709.70		18,145.21
561 Tuition To Other School Districts Within the State	2,451.55	79,154.36		81,605.91
562 Tuition To Pennsylvania Charter Schools	221,015.27	443,625.47		664,640.74
580 Travel	1,603.58			1,603.58
Total Other Purchased Services	\$265,214.59	\$558,466.85	\$15,337.84	\$839,019.28
600 Supplies				
610 General Supplies	364,525.75	371,380.09	18,289.81	754,195.65
630 Food	171.17			171.17
640 Books and Periodicals	127,860.41	29,003.99	3,004.18	159,868.58
650 Supplies & Fees – Technology Related	233,243.09	453,319.44	19,494.71	706,057.24
Total Supplies	\$725,800.42	\$853,703.52	\$40,788.70	\$1,620,292.64
700 Property				
752 Capital Equipment – Original and Additional		32,145.93		32,145.93
Total Property		\$32,145.93		\$32,145.93
800 Other Objects				

General Fund (10)

	<u>Elementary</u>	<u>Secondary</u>	<u>Federal</u>	<u>Total</u>
1100 Regular Programs – Elementary / Secondary				
800 <u>Other Objects</u>				
810 Dues and Fees		27,280.56		27,280.56
Total Other Objects		\$27,280.56		\$27,280.56
Total 1100 Regular Programs – Elementary / Secondary	\$24,487,689.06	\$22,009,698.65	\$847,140.21	\$47,344,527.92

General Fund (10)

1110 Regular Programs

	<u>Elementary</u>	<u>Secondary</u>	<u>Federal</u>	<u>Total</u>
100 Personnel Services – Salaries				
100 Personnel Services – Salaries	14,075,285.34	12,125,403.47		26,200,688.81
Total Personnel Services – Salaries	\$14,075,285.34	\$12,125,403.47		\$26,200,688.81
200 Personnel Services – Employee Benefits				
210 Group Insurance – Contracted Provider	37,114.71	39,105.49		76,220.20
220 Social Security Contributions	1,045,878.48	899,771.59		1,945,650.07
230 PSERS Retirement Contributions	4,781,450.59	4,202,228.39		8,983,678.98
250 Unemployment Compensation		66.68		66.68
260 Workers' Compensation	114,718.80	142,899.11		257,617.91
270 Group Insurance – Self-Insurance	2,670,745.03	2,305,967.59		4,976,712.62
291 Other Retirement Plans	52,350.00	5,000.00		57,350.00
292 Health Savings Accounts	172,278.70	159,026.65		331,305.35
299 All Other Employee Benefits	175.00			175.00
Total Personnel Services – Employee Benefits	\$8,874,711.31	\$7,754,065.50		\$16,628,776.81
300 Purchased Professional and Technical Services				
322 Professional Educational Services – Ius		26,637.50		26,637.50
329 Professional Educational Services – Other	514,758.90	606,636.57		1,121,395.47
330 Other Professional Services	14,127.85	12,587.48		26,715.33
340 Technical Services	1,900.00			1,900.00
Total Purchased Professional and Technical Services	\$530,786.75	\$645,861.55		\$1,176,648.30
400 Purchased Property Services				
410 Cleaning Services	2,040.00			2,040.00
430 Repairs and Maintenance Services	13,850.65	12,771.27		26,621.92
Total Purchased Property Services	\$15,890.65	\$12,771.27		\$28,661.92
500 Other Purchased Services				
510 Student Transportation Services	24,699.63	18,976.24		43,675.87
530 Communications	6,009.05	8,001.08		14,010.13
550 Printing and Binding	9,435.51	8,709.70		18,145.21
561 Tuition To Other School Districts Within the State	2,451.55	79,154.36		81,605.91
562 Tuition To Pennsylvania Charter Schools	221,015.27	443,625.47		664,640.74
580 Travel	1,603.58			1,603.58
Total Other Purchased Services	\$265,214.59	\$558,466.85		\$823,681.44
600 Supplies				
610 General Supplies	364,525.75	371,380.09		735,905.84
630 Food	171.17			171.17
640 Books and Periodicals	127,860.41	29,003.99		156,864.40
650 Supplies & Fees – Technology Related	233,243.09	453,319.44		686,562.53
Total Supplies	\$725,800.42	\$853,703.52		\$1,579,503.94
700 Property				
752 Capital Equipment – Original and Additional		32,145.93		32,145.93
Total Property		\$32,145.93		\$32,145.93
800 Other Objects				

LEA : 113364503 Manheim Township SD

Printed 10/31/2024 9:22:09 AM

General Fund (10)

1110 Regular Programs

Elementary

Secondary

Federal

Total

800 Other Objects

810 Dues and Fees

27,280.56

27,280.56

Total Other Objects

\$27,280.56

\$27,280.56

Total 1110 Regular Programs

\$24,487,689.06

\$22,009,698.65

\$46,497,387.71

General Fund (10)

	<u>Elementary</u>	<u>Secondary</u>	<u>Federal</u>	<u>Total</u>
1190 Federally-Funded Regular Programs				
100 Personnel Services – Salaries				
100 Personnel Services – Salaries			531,005.73	531,005.73
Total Personnel Services – Salaries			\$531,005.73	\$531,005.73
200 Personnel Services – Employee Benefits				
210 Group Insurance – Contracted Provider			589.56	589.56
220 Social Security Contributions			39,612.35	39,612.35
230 PSERS Retirement Contributions			90,240.26	90,240.26
270 Group Insurance – Self-Insurance			91,444.94	91,444.94
292 Health Savings Accounts			7,794.46	7,794.46
Total Personnel Services – Employee Benefits			\$229,681.57	\$229,681.57
300 Purchased Professional and Technical Services				
329 Professional Educational Services – Other			17,176.00	17,176.00
330 Other Professional Services			13,150.37	13,150.37
Total Purchased Professional and Technical Services			\$30,326.37	\$30,326.37
500 Other Purchased Services				
510 Student Transportation Services			15,337.84	15,337.84
Total Other Purchased Services			\$15,337.84	\$15,337.84
600 Supplies				
610 General Supplies			18,289.81	18,289.81
640 Books and Periodicals			3,004.18	3,004.18
650 Supplies & Fees – Technology Related			19,494.71	19,494.71
Total Supplies			\$40,788.70	\$40,788.70
Total 1190 Federally-Funded Regular Programs			\$847,140.21	\$847,140.21

General Fund (10)

1200 Special Programs – Elementary / Secondary	<u>Elementary</u>	<u>Secondary</u>	<u>Federal</u>	<u>Total</u>
100 Personnel Services – Salaries				
100 Personnel Services – Salaries	3,613,877.45	2,376,918.20		5,990,795.65
Total Personnel Services – Salaries	\$3,613,877.45	\$2,376,918.20		\$5,990,795.65
200 Personnel Services – Employee Benefits				
210 Group Insurance – Contracted Provider	5,330.66	5,611.02		10,941.68
220 Social Security Contributions	269,000.62	177,086.30		446,086.92
230 PSERS Retirement Contributions	1,222,122.80	807,633.44		2,029,756.24
250 Unemployment Compensation	449.70			449.70
260 Workers' Compensation	6,429.02	14,795.69		21,224.71
270 Group Insurance – Self-Insurance	641,558.66	499,567.26		1,141,125.92
292 Health Savings Accounts	32,251.87	22,321.80		54,573.67
Total Personnel Services – Employee Benefits	\$2,177,143.33	\$1,527,015.51		\$3,704,158.84
300 Purchased Professional and Technical Services				
322 Professional Educational Services – Ius	673,105.55	1,287,228.61	717,512.00	2,677,846.16
329 Professional Educational Services – Other	346,746.57	157,557.98	545,238.43	1,049,542.98
330 Other Professional Services	21,957.00	20,268.00		42,225.00
390 Other Purchased Professional and Technical Services	20,330.65	14,864.36		35,195.01
Total Purchased Professional and Technical Services	\$1,062,139.77	\$1,479,918.95	\$1,262,750.43	\$3,804,809.15
400 Purchased Property Services				
430 Repairs and Maintenance Services	669.24	617.76		1,287.00
Total Purchased Property Services	\$669.24	\$617.76		\$1,287.00
500 Other Purchased Services				
510 Student Transportation Services	1,624.58	1,499.61		3,124.19
530 Communications		7.43		7.43
561 Tuition To Other School Districts Within the State	27,424.42	71,805.99		99,230.41
562 Tuition To Pennsylvania Charter Schools	247,108.96	474,498.42		721,607.38
567 Tuition To Approved Private Schools (APS) and PA Chartered Schools for the Deaf and Blind		68,215.68		68,215.68
568 Tuition To Private Residential Rehabilitative Institutions (PRRI) [In-State] and Detention Centers	214,964.00	77,372.00		292,336.00
569 Tuition – Other	3,915.60	326,591.62		330,507.22
580 Travel	1,654.52	77.81		1,732.33
Total Other Purchased Services	\$496,692.08	\$1,020,068.56		\$1,516,760.64
600 Supplies				
610 General Supplies	89,758.18	29,150.40		118,908.58
640 Books and Periodicals	6,645.78	3,954.02		10,599.80
650 Supplies & Fees – Technology Related	3,028.97	1,332.33		4,361.30
Total Supplies	\$99,432.93	\$34,436.75		\$133,869.68
800 Other Objects				
810 Dues and Fees	2,072.28	1,912.88		3,985.16
Total Other Objects	\$2,072.28	\$1,912.88		\$3,985.16
Total 1200 Special Programs – Elementary / Secondary	\$7,452,027.08	\$6,440,888.61	\$1,262,750.43	\$15,155,666.12

General Fund (10)

1210 Life Skills Support

	<u>Elementary</u>	<u>Secondary</u>	<u>Federal</u>	<u>Total</u>
100 Personnel Services – Salaries				
100 Personnel Services – Salaries	183,218.86	144,585.36		327,804.22
Total Personnel Services – Salaries	\$183,218.86	\$144,585.36		\$327,804.22
200 Personnel Services – Employee Benefits				
210 Group Insurance – Contracted Provider	123.60	420.80		544.40
220 Social Security Contributions	13,832.94	10,385.66		24,218.60
230 PSERS Retirement Contributions	62,275.57	49,158.97		111,434.54
270 Group Insurance – Self-Insurance	17,450.10	73,600.42		91,050.52
292 Health Savings Accounts	1,650.02	2,616.64		4,266.66
Total Personnel Services – Employee Benefits	\$95,332.23	\$136,182.49		\$231,514.72
300 Purchased Professional and Technical Services				
329 Professional Educational Services – Other	3,988.00	1,608.00		5,596.00
Total Purchased Professional and Technical Services	\$3,988.00	\$1,608.00		\$5,596.00
600 Supplies				
610 General Supplies	1,407.38	1,496.64		2,904.02
640 Books and Periodicals	299.99	450.95		750.94
650 Supplies & Fees – Technology Related	272.12	200.00		472.12
Total Supplies	\$1,979.49	\$2,147.59		\$4,127.08
Total 1210 Life Skills Support	\$284,518.58	\$284,523.44		\$569,042.02

General Fund (10)

	<u>Elementary</u>	<u>Secondary</u>	<u>Federal</u>	<u>Total</u>
1220 Sensory Support				
100 Personnel Services – Salaries				
100 Personnel Services – Salaries	518,357.39	51,925.87		570,283.26
Total Personnel Services – Salaries	\$518,357.39	\$51,925.87		\$570,283.26
200 Personnel Services – Employee Benefits				
210 Group Insurance – Contracted Provider	675.84	98.52		774.36
220 Social Security Contributions	38,342.04	3,779.94		42,121.98
230 PSERS Retirement Contributions	176,247.20	17,654.79		193,901.99
270 Group Insurance – Self-Insurance	102,527.64	17,854.50		120,382.14
292 Health Savings Accounts	8,069.96	1,155.00		9,224.96
Total Personnel Services – Employee Benefits	\$325,862.68	\$40,542.75		\$366,405.43
300 Purchased Professional and Technical Services				
322 Professional Educational Services – lus	85,000.78	90,323.68		175,324.46
390 Other Purchased Professional and Technical Services	19,994.65	12,580.36		32,575.01
Total Purchased Professional and Technical Services	\$104,995.43	\$102,904.04		\$207,899.47
500 Other Purchased Services				
580 Travel	183.44			183.44
Total Other Purchased Services	\$183.44			\$183.44
600 Supplies				
610 General Supplies	4,020.15	132.12		4,152.27
640 Books and Periodicals	49.99	103.85		153.84
Total Supplies	\$4,070.14	\$235.97		\$4,306.11
Total 1220 Sensory Support	\$953,469.08	\$195,608.63		\$1,149,077.71

General Fund (10)

1230 Emotional Support

	<u>Elementary</u>	<u>Secondary</u>	<u>Federal</u>	<u>Total</u>
100 Personnel Services – Salaries				
100 Personnel Services – Salaries	1,048,573.47	568,130.51		1,616,703.98
Total Personnel Services – Salaries	\$1,048,573.47	\$568,130.51		\$1,616,703.98
200 Personnel Services – Employee Benefits				
210 Group Insurance – Contracted Provider	1,850.17	531.43		2,381.60
220 Social Security Contributions	77,359.82	42,744.84		120,104.66
230 PSERS Retirement Contributions	355,159.86	193,000.00		548,159.86
250 Unemployment Compensation	449.70			449.70
270 Group Insurance – Self-Insurance	265,006.78	86,295.56		351,302.34
292 Health Savings Accounts	7,410.34	3,073.58		10,483.92
Total Personnel Services – Employee Benefits	\$707,236.67	\$325,645.41		\$1,032,882.08
300 Purchased Professional and Technical Services				
322 Professional Educational Services – Ius	588,104.77	748,948.98		1,337,053.75
329 Professional Educational Services – Other	55,100.00	12,871.17		67,971.17
330 Other Professional Services	21,957.00	20,268.00		42,225.00
Total Purchased Professional and Technical Services	\$665,161.77	\$782,088.15		\$1,447,249.92
500 Other Purchased Services				
561 Tuition To Other School Districts Within the State		21,337.93		21,337.93
567 Tuition To Approved Private Schools (APS) and PA Chartered Schools for the Deaf and Blind		30,582.57		30,582.57
568 Tuition To Private Residential Rehabilitative Institutions (PRRI) [In-State] and Detention Centers	214,964.00	61,540.00		276,504.00
569 Tuition – Other		322,977.22		322,977.22
580 Travel	84.30	77.81		162.11
Total Other Purchased Services	\$215,048.30	\$436,515.53		\$651,563.83
600 Supplies				
610 General Supplies	10,918.22	2,073.47		12,991.69
640 Books and Periodicals	3,115.46	511.16		3,626.62
650 Supplies & Fees – Technology Related	1,375.30			1,375.30
Total Supplies	\$15,408.98	\$2,584.63		\$17,993.61
Total 1230 Emotional Support	\$2,651,429.19	\$2,114,964.23		\$4,766,393.42

General Fund (10)

1240 Academic Support

	<u>Elementary</u>	<u>Secondary</u>	<u>Federal</u>	<u>Total</u>
100 Personnel Services – Salaries				
100 Personnel Services – Salaries	1,713,952.13	1,544,308.09		3,258,260.22
Total Personnel Services – Salaries	\$1,713,952.13	\$1,544,308.09		\$3,258,260.22
200 Personnel Services – Employee Benefits				
210 Group Insurance – Contracted Provider	2,470.09	4,443.95		6,914.04
220 Social Security Contributions	128,106.06	115,211.66		243,317.72
230 PSERS Retirement Contributions	577,516.54	524,726.59		1,102,243.13
260 Workers' Compensation	6,429.02	14,795.69		21,224.71
270 Group Insurance – Self-Insurance	230,557.36	305,636.01		536,193.37
292 Health Savings Accounts	14,296.61	14,809.93		29,106.54
Total Personnel Services – Employee Benefits	\$959,375.68	\$979,623.83		\$1,938,999.51
300 Purchased Professional and Technical Services				
322 Professional Educational Services – Ius		150,336.86		150,336.86
329 Professional Educational Services – Other	244,531.30	102,519.14		347,050.44
390 Other Purchased Professional and Technical Services	336.00	2,284.00		2,620.00
Total Purchased Professional and Technical Services	\$244,867.30	\$255,140.00		\$500,007.30
400 Purchased Property Services				
430 Repairs and Maintenance Services	669.24	617.76		1,287.00
Total Purchased Property Services	\$669.24	\$617.76		\$1,287.00
500 Other Purchased Services				
530 Communications		7.43		7.43
561 Tuition To Other School Districts Within the State	27,424.42	50,468.06		77,892.48
562 Tuition To Pennsylvania Charter Schools	247,108.96	474,498.42		721,607.38
580 Travel	1,386.78			1,386.78
Total Other Purchased Services	\$275,920.16	\$524,973.91		\$800,894.07
600 Supplies				
610 General Supplies	17,703.54	966.79		18,670.33
640 Books and Periodicals	3,180.34	1,340.87		4,521.21
650 Supplies & Fees – Technology Related	429.00	707.00		1,136.00
Total Supplies	\$21,312.88	\$3,014.66		\$24,327.54
Total 1240 Academic Support	\$3,216,097.39	\$3,307,678.25		\$6,523,775.64

General Fund (10)

	<u>Elementary</u>	<u>Secondary</u>	<u>Federal</u>	<u>Total</u>
1241 Learning Support – Public				
100 Personnel Services – Salaries				
100 Personnel Services – Salaries	1,449,063.63	1,251,548.59		2,700,612.22
Total Personnel Services – Salaries	\$1,449,063.63	\$1,251,548.59		\$2,700,612.22
200 Personnel Services – Employee Benefits				
210 Group Insurance – Contracted Provider	2,118.97	4,143.69		6,262.66
220 Social Security Contributions	108,743.89	93,272.44		202,016.33
230 PSERS Retirement Contributions	487,581.96	425,294.79		912,876.75
260 Workers' Compensation	6,429.02	14,795.69		21,224.71
270 Group Insurance – Self-Insurance	172,909.90	257,317.68		430,227.58
292 Health Savings Accounts	9,346.61	11,833.28		21,179.89
Total Personnel Services – Employee Benefits	\$787,130.35	\$806,657.57		\$1,593,787.92
300 Purchased Professional and Technical Services				
322 Professional Educational Services – Ius		150,336.86		150,336.86
329 Professional Educational Services – Other	244,531.30	98,403.64		342,934.94
Total Purchased Professional and Technical Services	\$244,531.30	\$248,740.50		\$493,271.80
400 Purchased Property Services				
430 Repairs and Maintenance Services	669.24	617.76		1,287.00
Total Purchased Property Services	\$669.24	\$617.76		\$1,287.00
500 Other Purchased Services				
530 Communications		7.43		7.43
561 Tuition To Other School Districts Within the State	27,424.42	50,468.06		77,892.48
562 Tuition To Pennsylvania Charter Schools	247,108.96	474,498.42		721,607.38
580 Travel	1,233.55			1,233.55
Total Other Purchased Services	\$275,766.93	\$524,973.91		\$800,740.84
600 Supplies				
610 General Supplies	7,985.34	669.29		8,654.63
640 Books and Periodicals	3,180.34	1,340.87		4,521.21
650 Supplies & Fees – Technology Related	429.00	707.00		1,136.00
Total Supplies	\$11,594.68	\$2,717.16		\$14,311.84
Total 1241 Learning Support – Public	\$2,768,756.13	\$2,835,255.49		\$5,604,011.62

General Fund (10)

	<u>Elementary</u>	<u>Secondary</u>	<u>Federal</u>	<u>Total</u>
1243 Gifted Support				
100 Personnel Services – Salaries				
100 Personnel Services – Salaries	264,888.50	292,759.50		557,648.00
Total Personnel Services – Salaries	\$264,888.50	\$292,759.50		\$557,648.00
200 Personnel Services – Employee Benefits				
210 Group Insurance – Contracted Provider	351.12	300.26		651.38
220 Social Security Contributions	19,362.17	21,939.22		41,301.39
230 PSERS Retirement Contributions	89,934.58	99,431.80		189,366.38
270 Group Insurance – Self-Insurance	57,647.46	48,318.33		105,965.79
292 Health Savings Accounts	4,950.00	2,976.65		7,926.65
Total Personnel Services – Employee Benefits	\$172,245.33	\$172,966.26		\$345,211.59
300 Purchased Professional and Technical Services				
329 Professional Educational Services – Other		4,115.50		4,115.50
390 Other Purchased Professional and Technical Services	336.00	2,284.00		2,620.00
Total Purchased Professional and Technical Services	\$336.00	\$6,399.50		\$6,735.50
500 Other Purchased Services				
580 Travel	153.23			153.23
Total Other Purchased Services	\$153.23			\$153.23
600 Supplies				
610 General Supplies	9,718.20	297.50		10,015.70
Total Supplies	\$9,718.20	\$297.50		\$10,015.70
Total 1243 Gifted Support	\$447,341.26	\$472,422.76		\$919,764.02

General Fund (10)

1270 Multi-Handicapped Support

	<u>Elementary</u>	<u>Secondary</u>	<u>Federal</u>	<u>Total</u>
100 Personnel Services – Salaries				
100 Personnel Services – Salaries	149,775.60	67,968.37		217,743.97
Total Personnel Services – Salaries	\$149,775.60	\$67,968.37		\$217,743.97
200 Personnel Services – Employee Benefits				
210 Group Insurance – Contracted Provider	210.96	116.32		327.28
220 Social Security Contributions	11,359.76	4,964.20		16,323.96
230 PSERS Retirement Contributions	50,923.63	23,093.09		74,016.72
270 Group Insurance – Self-Insurance	26,016.78	16,180.77		42,197.55
292 Health Savings Accounts	824.94	666.65		1,491.59
Total Personnel Services – Employee Benefits	\$89,336.07	\$45,021.03		\$134,357.10
300 Purchased Professional and Technical Services				
329 Professional Educational Services – Other	1,909.50	2,512.50		4,422.00
Total Purchased Professional and Technical Services	\$1,909.50	\$2,512.50		\$4,422.00
600 Supplies				
610 General Supplies	45,965.72	15,487.68		61,453.40
640 Books and Periodicals		1,547.19		1,547.19
650 Supplies & Fees – Technology Related	952.55	425.33		1,377.88
Total Supplies	\$46,918.27	\$17,460.20		\$64,378.47
Total 1270 Multi-Handicapped Support	\$287,939.44	\$132,962.10		\$420,901.54

General Fund (10)

1290 Special Programs - Other Support

300 Purchased Professional and Technical Services

	<u>Elementary</u>	<u>Secondary</u>	<u>Federal</u>	<u>Total</u>
322 Professional Educational Services – Ius		297,619.09	717,512.00	1,015,131.09
329 Professional Educational Services – Other	41,217.77	38,047.17	545,238.43	624,503.37
Total Purchased Professional and Technical Services	\$41,217.77	\$335,666.26	\$1,262,750.43	\$1,639,634.46

500 Other Purchased Services

510 Student Transportation Services	1,624.58	1,499.61		3,124.19
567 Tuition To Approved Private Schools (APS) and PA Chartered Schools for the Deaf and Blind		37,633.11		37,633.11
568 Tuition To Private Residential Rehabilitative Institutions (PRRI) [In-State] and Detention Centers		15,832.00		15,832.00
569 Tuition – Other	3,915.60	3,614.40		7,530.00
Total Other Purchased Services	\$5,540.18	\$58,579.12		\$64,119.30

600 Supplies

610 General Supplies	9,743.17	8,993.70		18,736.87
Total Supplies	\$9,743.17	\$8,993.70		\$18,736.87

800 Other Objects

810 Dues and Fees	2,072.28	1,912.88		3,985.16
Total Other Objects	\$2,072.28	\$1,912.88		\$3,985.16
Total 1290 Special Programs - Other Support	\$58,573.40	\$405,151.96	\$1,262,750.43	\$1,726,475.79

General Fund (10)

1300 Vocational Education

Elementary

Secondary

Federal

Total

500 Other Purchased Services

564 Tuition To Career and Technology Centers

1,287,187.79

1,287,187.79

Total Other Purchased Services

\$1,287,187.79

\$1,287,187.79

Total 1300 Vocational Education

\$1,287,187.79

\$1,287,187.79

General Fund (10)

	<u>Elementary</u>	<u>Secondary</u>	<u>Federal</u>	<u>Total</u>
1400 Other Instructional Programs – Elementary / Secondary				
100 Personnel Services – Salaries				
100 Personnel Services – Salaries	2,883.00	36,480.00	8,044.50	47,407.50
Total Personnel Services – Salaries	\$2,883.00	\$36,480.00	\$8,044.50	\$47,407.50
200 Personnel Services – Employee Benefits				
220 Social Security Contributions	216.12	2,710.42	603.10	3,529.64
230 PSERS Retirement Contributions	1,967.20	12,362.40	1,364.39	15,693.99
Total Personnel Services – Employee Benefits	\$2,183.32	\$15,072.82	\$1,967.49	\$19,223.63
300 Purchased Professional and Technical Services				
329 Professional Educational Services – Other	2,932.96	9,072.76		12,005.72
330 Other Professional Services		849.49		849.49
390 Other Purchased Professional and Technical Services		32,000.00		32,000.00
Total Purchased Professional and Technical Services	\$2,932.96	\$41,922.25		\$44,855.21
500 Other Purchased Services				
561 Tuition To Other School Districts Within the State		11,794.52		11,794.52
568 Tuition To Private Residential Rehabilitative Institutions (PRRI) [In-State] and Detention Centers		7,432.22		7,432.22
569 Tuition – Other	12,729.75	120,878.83		133,608.58
Total Other Purchased Services	\$12,729.75	\$140,105.57		\$152,835.32
600 Supplies				
610 General Supplies	566.87			566.87
650 Supplies & Fees – Technology Related		49,081.28		49,081.28
Total Supplies	\$566.87	\$49,081.28		\$49,648.15
Total 1400 Other Instructional Programs – Elementary / Secondary	\$21,295.90	\$282,661.92	\$10,011.99	\$313,969.81

General Fund (10)

	<u>Elementary</u>	<u>Secondary</u>	<u>Federal</u>	<u>Total</u>
1420 Summer School				
100 Personnel Services – Salaries				
100 Personnel Services – Salaries	2,883.00	36,150.00	5,787.00	44,820.00
Total Personnel Services – Salaries	\$2,883.00	\$36,150.00	\$5,787.00	\$44,820.00
200 Personnel Services – Employee Benefits				
220 Social Security Contributions	216.12	2,685.61	434.52	3,336.25
230 PSERS Retirement Contributions	1,967.20	12,250.20	980.60	15,198.00
Total Personnel Services – Employee Benefits	\$2,183.32	\$14,935.81	\$1,415.12	\$18,534.25
600 Supplies				
610 General Supplies	566.87			566.87
650 Supplies & Fees – Technology Related		49,081.28		49,081.28
Total Supplies	\$566.87	\$49,081.28		\$49,648.15
Total 1420 Summer School	\$5,633.19	\$100,167.09	\$7,202.12	\$113,002.40

General Fund (10)

	<u>Elementary</u>	<u>Secondary</u>	<u>Federal</u>	<u>Total</u>
1430 Homebound Instruction				
100 Personnel Services – Salaries				
100 Personnel Services – Salaries		330.00		330.00
Total Personnel Services – Salaries		\$330.00		\$330.00
200 Personnel Services – Employee Benefits				
220 Social Security Contributions		24.81		24.81
230 PSERS Retirement Contributions		112.20		112.20
Total Personnel Services – Employee Benefits		\$137.01		\$137.01
300 Purchased Professional and Technical Services				
329 Professional Educational Services – Other	2,932.96	9,072.76		12,005.72
Total Purchased Professional and Technical Services	\$2,932.96	\$9,072.76		\$12,005.72
Total 1430 Homebound Instruction	\$2,932.96	\$9,539.77		\$12,472.73

General Fund (10)

1440 Alternative Regular Education Programs

500 Other Purchased Services

	<u>Elementary</u>	<u>Secondary</u>	<u>Federal</u>	<u>Total</u>
561 Tuition To Other School Districts Within the State		11,794.52		11,794.52
568 Tuition To Private Residential Rehabilitative Institutions (PRRI) [In-State] and Detention Centers		7,432.22		7,432.22
569 Tuition – Other	12,729.75	120,878.83		133,608.58
Total Other Purchased Services	\$12,729.75	\$140,105.57		\$152,835.32
Total 1440 Alternative Regular Education Programs	\$12,729.75	\$140,105.57		\$152,835.32

LEA : 113364503 Manheim Township SD

Printed 10/31/2024 9:22:09 AM

General Fund (10)

1441 Adjudicated / Court-Placed Programs

Elementary

Secondary

Federal

Total

500 Other Purchased Services

561 Tuition To Other School Districts Within the State

11,794.52

11,794.52

Total Other Purchased Services

\$11,794.52

\$11,794.52

Total 1441 Adjudicated / Court-Placed Programs

\$11,794.52

\$11,794.52

General Fund (10)

1442 Alternative Education Programs

500 Other Purchased Services

	<u>Elementary</u>	<u>Secondary</u>	<u>Federal</u>	<u>Total</u>
568 Tuition To Private Residential Rehabilitative Institutions (PRRI) [In-State] and Detention Centers		7,432.22		7,432.22
569 Tuition – Other	12,729.75	120,878.83		133,608.58
Total Other Purchased Services	\$12,729.75	\$128,311.05		\$141,040.80
Total 1442 Alternative Education Programs	\$12,729.75	\$128,311.05		\$141,040.80

General Fund (10)

	<u>Elementary</u>	<u>Secondary</u>	<u>Federal</u>	<u>Total</u>
1450 Instructional Programs Outside the Established School Day				
100 Personnel Services – Salaries				
100 Personnel Services – Salaries			2,257.50	2,257.50
Total Personnel Services – Salaries			\$2,257.50	\$2,257.50
200 Personnel Services – Employee Benefits				
220 Social Security Contributions			168.58	168.58
230 PSERS Retirement Contributions			383.79	383.79
Total Personnel Services – Employee Benefits			\$552.37	\$552.37
300 Purchased Professional and Technical Services				
390 Other Purchased Professional and Technical Services		32,000.00		32,000.00
Total Purchased Professional and Technical Services		\$32,000.00		\$32,000.00
Total 1450 Instructional Programs Outside the Established School Day		\$32,000.00	\$2,809.87	\$34,809.87

General Fund (10)

1490 Additional Other Instructional Programs

Elementary

Secondary

Federal

Total

300 Purchased Professional and Technical Services

330 Other Professional Services

849.49

849.49

Total Purchased Professional and Technical Services

\$849.49

\$849.49

Total 1490 Additional Other Instructional Programs

\$849.49

\$849.49

General Fund (10)

1500 Nonpublic School Programs

<u>Elementary</u>	<u>Secondary</u>	<u>Federal</u>	<u>Total</u>
-------------------	------------------	----------------	--------------

300 Purchased Professional and Technical Services

322 Professional Educational Services – Ius		7,465.29	7,465.29
---	--	----------	----------

329 Professional Educational Services – Other		1,270.00	1,270.00
---	--	----------	----------

Total Purchased Professional and Technical Services		\$8,735.29	\$8,735.29
--	--	-------------------	-------------------

600 Supplies

610 General Supplies		4,965.57	4,965.57
----------------------	--	----------	----------

Total Supplies		\$4,965.57	\$4,965.57
-----------------------	--	-------------------	-------------------

Total 1500 Nonpublic School Programs		\$13,700.86	\$13,700.86
---	--	--------------------	--------------------

General Fund (10)

2000 Support Services

Total

100 Personnel Services – Salaries

100 Personnel Services – Salaries 13,525,981.78

Total Personnel Services – Salaries \$13,525,981.78

200 Personnel Services – Employee Benefits

210 Group Insurance – Contracted Provider 27,153.81

220 Social Security Contributions 999,157.81

230 PSERS Retirement Contributions 4,527,135.41

240 Tuition Reimbursement 482,374.31

250 Unemployment Compensation 9,459.00

260 Workers' Compensation 49,564.05

270 Group Insurance – Self-Insurance 2,845,757.77

291 Other Retirement Plans 63,448.48

292 Health Savings Accounts 150,418.34

299 All Other Employee Benefits 676.20

Total Personnel Services – Employee Benefits \$9,155,145.18

300 Purchased Professional and Technical Services

310 Official / Administrative Services 143,312.64

322 Professional Educational Services – Ius 62,397.50

329 Professional Educational Services – Other 7,327.40

330 Other Professional Services 584,617.42

340 Technical Services 26,927.58

350 Security / Safety Services 194,217.44

360 Employee Training and Development Services 90,033.63

390 Other Purchased Professional and Technical Services 58,275.81

Total Purchased Professional and Technical Services \$1,167,109.42

400 Purchased Property Services

410 Cleaning Services 697,016.02

420 Utility Services 127,393.18

430 Repairs and Maintenance Services 1,162,456.12

440 Rentals 42,985.45

450 Construction Services 304.69

460 Extermination Services 7,395.37

Total Purchased Property Services \$2,037,550.83

500 Other Purchased Services

513 Contracted Carriers 4,554,946.72

516 Student Transportation Services From the IU 190,958.36

520 Insurance – General 416.00

523 General Property and Liability Insurance 557,312.00

530 Communications 181,631.40

549 Other Advertising/Public Relations 14,180.25

550 Printing and Binding 14,083.47

580 Travel 35,918.43

595 IU Payments By Withholding 55,598.69

Total Other Purchased Services \$5,605,045.32

LEA : 113364503 Manheim Township SD

Printed 10/31/2024 9:22:17 AM

General Fund (10)

2000 Support Services

Total

600 Supplies

610 General Supplies	884,355.75
620 Energy	1,514,455.42
630 Food	38,699.16
640 Books and Periodicals	53,355.09
650 Supplies & Fees – Technology Related	686,946.96

Total Supplies	\$3,177,812.38
-----------------------	-----------------------

700 Property

739 Leases - Other	321,861.00
752 Capital Equipment – Original and Additional	21,567.32

Total Property	\$343,428.32
-----------------------	---------------------

800 Other Objects

810 Dues and Fees	81,382.28
820 Claims and Judgments Against the LEA	123,005.00
890 Miscellaneous Expenditures	400.00

Total Other Objects	\$204,787.28
----------------------------	---------------------

Total 2000 Support Services	\$35,216,860.51
------------------------------------	------------------------

General Fund (10)

	<u>Elementary</u>	<u>Secondary</u>	<u>Federal</u>	<u>Total</u>
2100 Support Services – Students				
100 Personnel Services – Salaries				
100 Personnel Services – Salaries	1,320,863.35	1,144,903.94	31,833.00	2,711,181.20
Total Personnel Services – Salaries	\$1,320,863.35	\$1,144,903.94	\$31,833.00	\$2,711,181.20
200 Personnel Services – Employee Benefits				
210 Group Insurance – Contracted Provider	1,602.86	2,769.48		4,747.38
220 Social Security Contributions	98,407.85	84,696.91	2,325.00	201,354.79
230 PSERS Retirement Contributions	448,628.75	388,897.44	5,411.50	919,890.57
260 Workers' Compensation		7,690.98		7,690.98
270 Group Insurance – Self-Insurance	249,069.64	203,778.87	6,044.44	501,692.54
291 Other Retirement Plans	5,000.00			5,000.00
292 Health Savings Accounts	13,642.76	15,266.13		31,267.24
Total Personnel Services – Employee Benefits	\$816,351.86	\$703,099.81	\$13,780.94	\$1,671,643.50
300 Purchased Professional and Technical Services				
329 Professional Educational Services – Other				1,498.40
330 Other Professional Services	44,227.37	51,419.32		103,500.88
390 Other Purchased Professional and Technical Services	20,715.26	8,360.83		29,076.09
Total Purchased Professional and Technical Services	\$64,942.63	\$59,780.15		\$134,075.37
500 Other Purchased Services				
530 Communications	3,117.61	3,140.64		6,258.25
550 Printing and Binding	837.52	773.09		1,610.61
580 Travel	133.87	224.65		968.47
Total Other Purchased Services	\$4,089.00	\$4,138.38		\$8,837.33
600 Supplies				
610 General Supplies	8,164.54	7,662.50		16,853.54
630 Food	54.80	5,078.81		5,613.57
640 Books and Periodicals	147.40	108.88		256.28
650 Supplies & Fees – Technology Related	12,310.70	22,290.00		52,693.20
Total Supplies	\$20,677.44	\$35,140.19		\$75,416.59
800 Other Objects				
810 Dues and Fees	202.28	931.72		1,224.00
Total Other Objects	\$202.28	\$931.72		\$1,224.00
Total 2100 Support Services – Students	\$2,227,126.56	\$1,947,994.19	\$45,613.94	\$4,602,377.99

General Fund (10)

	<u>Elementary</u>	<u>Secondary</u>	<u>Federal</u>	<u>Total</u>
2110 Supervision of Student Services				
100 Personnel Services – Salaries				
100 Personnel Services – Salaries	63,533.09	58,645.93		122,179.02
Total Personnel Services – Salaries	\$63,533.09	\$58,645.93		\$122,179.02
200 Personnel Services – Employee Benefits				
210 Group Insurance – Contracted Provider	84.05	77.59		161.64
220 Social Security Contributions	4,733.24	4,369.14		9,102.38
230 PSERS Retirement Contributions	21,352.43	19,709.93		41,062.36
270 Group Insurance – Self-Insurance	10,831.33	9,998.15		20,829.48
292 Health Savings Accounts	847.58	782.38		1,629.96
Total Personnel Services – Employee Benefits	\$37,848.63	\$34,937.19		\$72,785.82
500 Other Purchased Services				
530 Communications	630.72	582.20		1,212.92
550 Printing and Binding	837.52	773.09		1,610.61
580 Travel	89.72	82.82		172.54
Total Other Purchased Services	\$1,557.96	\$1,438.11		\$2,996.07
600 Supplies				
610 General Supplies	478.30	441.51		919.81
630 Food	54.80	50.59		105.39
640 Books and Periodicals	117.95	108.88		226.83
Total Supplies	\$651.05	\$600.98		\$1,252.03
800 Other Objects				
810 Dues and Fees	202.28	186.72		389.00
Total Other Objects	\$202.28	\$186.72		\$389.00
Total 2110 Supervision of Student Services	\$103,793.01	\$95,808.93		\$199,601.94

General Fund (10)

	<u>Elementary</u>	<u>Secondary</u>	<u>Federal</u>	<u>Total</u>
2111 Supervision of Student Services – Head of Component				
100 Personnel Services – Salaries				
100 Personnel Services – Salaries	63,533.09	58,645.93		122,179.02
Total Personnel Services – Salaries	\$63,533.09	\$58,645.93		\$122,179.02
200 Personnel Services – Employee Benefits				
210 Group Insurance – Contracted Provider	84.05	77.59		161.64
220 Social Security Contributions	4,733.24	4,369.14		9,102.38
230 PSERS Retirement Contributions	21,352.43	19,709.93		41,062.36
270 Group Insurance – Self-Insurance	10,831.33	9,998.15		20,829.48
292 Health Savings Accounts	847.58	782.38		1,629.96
Total Personnel Services – Employee Benefits	\$37,848.63	\$34,937.19		\$72,785.82
500 Other Purchased Services				
530 Communications	630.72	582.20		1,212.92
550 Printing and Binding	837.52	773.09		1,610.61
580 Travel	89.72	82.82		172.54
Total Other Purchased Services	\$1,557.96	\$1,438.11		\$2,996.07
600 Supplies				
610 General Supplies	478.30	441.51		919.81
630 Food	54.80	50.59		105.39
640 Books and Periodicals	117.95	108.88		226.83
Total Supplies	\$651.05	\$600.98		\$1,252.03
800 Other Objects				
810 Dues and Fees	202.28	186.72		389.00
Total Other Objects	\$202.28	\$186.72		\$389.00
Total 2111 Supervision of Student Services – Head of Component	\$103,793.01	\$95,808.93		\$199,601.94

General Fund (10)

	<u>Elementary</u>	<u>Secondary</u>	<u>Federal</u>	<u>Total</u>
2120 Guidance Services				
100 Personnel Services – Salaries				
100 Personnel Services – Salaries	688,471.92	867,416.30		1,555,888.22
Total Personnel Services – Salaries	\$688,471.92	\$867,416.30		\$1,555,888.22
200 Personnel Services – Employee Benefits				
210 Group Insurance – Contracted Provider	759.60	2,432.74		3,192.34
220 Social Security Contributions	51,079.92	64,144.00		115,223.92
230 PSERS Retirement Contributions	233,955.32	294,871.57		528,826.89
260 Workers' Compensation		7,690.98		7,690.98
270 Group Insurance – Self-Insurance	113,413.51	152,496.76		265,910.27
291 Other Retirement Plans	5,000.00			5,000.00
292 Health Savings Accounts	6,345.52	11,316.75		17,662.27
Total Personnel Services – Employee Benefits	\$410,553.87	\$532,952.80		\$943,506.67
300 Purchased Professional and Technical Services				
390 Other Purchased Professional and Technical Services		780.00		780.00
Total Purchased Professional and Technical Services		\$780.00		\$780.00
500 Other Purchased Services				
530 Communications		262.84		262.84
580 Travel		141.83		141.83
Total Other Purchased Services		\$404.67		\$404.67
600 Supplies				
610 General Supplies	748.06	816.51		1,564.57
630 Food		5,028.22		5,028.22
640 Books and Periodicals	29.45			29.45
650 Supplies & Fees – Technology Related	5,805.00	16,284.73		22,089.73
Total Supplies	\$6,582.51	\$22,129.46		\$28,711.97
800 Other Objects				
810 Dues and Fees		745.00		745.00
Total Other Objects		\$745.00		\$745.00
Total 2120 Guidance Services	\$1,105,608.30	\$1,424,428.23		\$2,530,036.53

General Fund (10)

2130 Attendance Services

Elementary

Secondary

Federal

Total

100 Personnel Services – Salaries

100 Personnel Services – Salaries

19,301.04

Total Personnel Services – Salaries

\$19,301.04

200 Personnel Services – Employee Benefits

220 Social Security Contributions

1,476.53

230 PSERS Retirement Contributions

6,562.35

Total Personnel Services – Employee Benefits

\$8,038.88

500 Other Purchased Services

580 Travel

598.02

Total Other Purchased Services

\$598.02

Total 2130 Attendance Services

\$27,937.94

General Fund (10)

	<u>Elementary</u>	<u>Secondary</u>	<u>Federal</u>	<u>Total</u>
2140 Psychological Services				
100 Personnel Services – Salaries				
100 Personnel Services – Salaries	568,858.34	218,841.71		787,700.05
Total Personnel Services – Salaries	\$568,858.34	\$218,841.71		\$787,700.05
200 Personnel Services – Employee Benefits				
210 Group Insurance – Contracted Provider	759.21	259.15		1,018.36
220 Social Security Contributions	42,594.69	16,183.77		58,778.46
230 PSERS Retirement Contributions	193,321.00	74,315.94		267,636.94
270 Group Insurance – Self-Insurance	124,824.80	41,283.96		166,108.76
292 Health Savings Accounts	6,449.66	3,167.00		9,616.66
Total Personnel Services – Employee Benefits	\$367,949.36	\$135,209.82		\$503,159.18
300 Purchased Professional and Technical Services				
330 Other Professional Services	31,115.57	39,316.12		70,431.69
Total Purchased Professional and Technical Services	\$31,115.57	\$39,316.12		\$70,431.69
500 Other Purchased Services				
530 Communications	2,486.89	2,295.60		4,782.49
580 Travel	44.15			44.15
Total Other Purchased Services	\$2,531.04	\$2,295.60		\$4,826.64
600 Supplies				
610 General Supplies	6,208.13	5,730.59		11,938.72
650 Supplies & Fees – Technology Related	6,505.70	6,005.27		12,510.97
Total Supplies	\$12,713.83	\$11,735.86		\$24,449.69
Total 2140 Psychological Services	\$983,168.14	\$407,399.11		\$1,390,567.25

General Fund (10)

	<u>Elementary</u>	<u>Secondary</u>	<u>Federal</u>	<u>Total</u>
2160 Social Work Services				
100 Personnel Services – Salaries				
100 Personnel Services – Salaries			31,833.00	144,695.00
Total Personnel Services – Salaries			\$31,833.00	\$144,695.00
200 Personnel Services – Employee Benefits				
210 Group Insurance – Contracted Provider				281.28
220 Social Security Contributions			2,325.00	10,653.29
230 PSERS Retirement Contributions			5,411.50	49,196.19
270 Group Insurance – Self-Insurance			6,044.44	36,602.34
292 Health Savings Accounts				1,650.00
Total Personnel Services – Employee Benefits			\$13,780.94	\$98,383.10
300 Purchased Professional and Technical Services				
329 Professional Educational Services – Other				1,016.00
Total Purchased Professional and Technical Services				\$1,016.00
600 Supplies				
610 General Supplies				988.67
630 Food				479.96
Total Supplies				\$1,468.63
Total 2160 Social Work Services			\$45,613.94	\$245,562.73

General Fund (10)

	<u>Elementary</u>	<u>Secondary</u>	<u>Federal</u>	<u>Total</u>
2170 Student Accounting Services				
100 Personnel Services – Salaries				
100 Personnel Services – Salaries				81,417.87
Total Personnel Services – Salaries				\$81,417.87
200 Personnel Services – Employee Benefits				
210 Group Insurance – Contracted Provider				93.76
220 Social Security Contributions				6,120.21
230 PSERS Retirement Contributions				26,605.84
270 Group Insurance – Self-Insurance				12,241.69
292 Health Savings Accounts				708.35
Total Personnel Services – Employee Benefits				\$45,769.85
300 Purchased Professional and Technical Services				
329 Professional Educational Services – Other				482.40
330 Other Professional Services				7,854.19
Total Purchased Professional and Technical Services				\$8,336.59
500 Other Purchased Services				
580 Travel				11.93
Total Other Purchased Services				\$11.93
600 Supplies				
610 General Supplies				37.83
650 Supplies & Fees – Technology Related				18,092.50
Total Supplies				\$18,130.33
800 Other Objects				
810 Dues and Fees				90.00
Total Other Objects				\$90.00
Total 2170 Student Accounting Services				\$153,756.57

General Fund (10)

	<u>Elementary</u>	<u>Secondary</u>	<u>Federal</u>	<u>Total</u>
2190 Other Student Services				
300 Purchased Professional and Technical Services				
330 Other Professional Services	13,111.80	12,103.20		25,215.00
390 Other Purchased Professional and Technical Services	20,715.26	7,580.83		28,296.09
Total Purchased Professional and Technical Services	\$33,827.06	\$19,684.03		\$53,511.09
600 Supplies				
610 General Supplies	730.05	673.89		1,403.94
Total Supplies	\$730.05	\$673.89		\$1,403.94
Total 2190 Other Student Services	\$34,557.11	\$20,357.92		\$54,915.03

General Fund (10)

2200 Support Services – Instructional Staff

	<u>Elementary</u>	<u>Secondary</u>	<u>Federal</u>	<u>Total</u>
100 Personnel Services – Salaries				
100 Personnel Services – Salaries	1,551,816.12	1,214,637.94		2,766,454.06
Total Personnel Services – Salaries	\$1,551,816.12	\$1,214,637.94		\$2,766,454.06
200 Personnel Services – Employee Benefits				
210 Group Insurance – Contracted Provider	2,462.76	1,974.45		4,437.21
220 Social Security Contributions	115,541.06	90,402.86		205,943.92
230 PSERS Retirement Contributions	524,994.97	410,855.95		935,850.92
240 Tuition Reimbursement	206,267.73	260,233.58		466,501.31
260 Workers' Compensation	3,213.91	2,966.69		6,180.60
270 Group Insurance – Self-Insurance	276,336.18	218,145.43		494,481.61
292 Health Savings Accounts	16,617.07	13,573.12		30,190.19
Total Personnel Services – Employee Benefits	\$1,145,433.68	\$998,152.08		\$2,143,585.76
300 Purchased Professional and Technical Services				
322 Professional Educational Services – Ius	9,500.00	9,500.00		19,000.00
329 Professional Educational Services – Other	4,824.00	1,005.00		5,829.00
340 Technical Services	1,438.74	1,328.06		2,766.80
360 Employee Training and Development Services	13,451.59	13,625.72		27,077.31
Total Purchased Professional and Technical Services	\$29,214.33	\$25,458.78		\$54,673.11
400 Purchased Property Services				
430 Repairs and Maintenance Services	3,487.15	3,218.90		6,706.05
Total Purchased Property Services	\$3,487.15	\$3,218.90		\$6,706.05
500 Other Purchased Services				
530 Communications	1,666.08	1,537.93		3,204.01
580 Travel	7,960.24	9,908.06		17,868.30
Total Other Purchased Services	\$9,626.32	\$11,445.99		\$21,072.31
600 Supplies				
610 General Supplies	5,635.72	6,212.97		11,848.69
630 Food	2,132.54	713.43		2,845.97
640 Books and Periodicals	28,226.85	20,309.08	1,537.59	50,073.52
650 Supplies & Fees – Technology Related	260,773.04	220,159.67	10,996.80	491,929.51
Total Supplies	\$296,768.15	\$247,395.15	\$12,534.39	\$556,697.69
700 Property				
752 Capital Equipment – Original and Additional		8,067.32		8,067.32
Total Property		\$8,067.32		\$8,067.32
800 Other Objects				
810 Dues and Fees	526.73	486.22		1,012.95
Total Other Objects	\$526.73	\$486.22		\$1,012.95
Total 2200 Support Services – Instructional Staff	\$3,036,872.48	\$2,508,862.38	\$12,534.39	\$5,558,269.25

General Fund (10)

	<u>Elementary</u>	<u>Secondary</u>	<u>Federal</u>	<u>Total</u>
2210 Supervision of Educational Media Services				
100 Personnel Services – Salaries				
100 Personnel Services – Salaries	64,180.45	59,243.50		123,423.95
Total Personnel Services – Salaries	\$64,180.45	\$59,243.50		\$123,423.95
200 Personnel Services – Employee Benefits				
210 Group Insurance – Contracted Provider	73.13	67.51		140.64
220 Social Security Contributions	4,629.58	4,273.46		8,903.04
230 PSERS Retirement Contributions	21,556.16	19,898.00		41,454.16
270 Group Insurance – Self-Insurance	8,352.27	7,709.79		16,062.06
292 Health Savings Accounts	858.00	792.00		1,650.00
Total Personnel Services – Employee Benefits	\$35,469.14	\$32,740.76		\$68,209.90
Total 2210 Supervision of Educational Media Services	\$99,649.59	\$91,984.26		\$191,633.85

General Fund (10)

	<u>Elementary</u>	<u>Secondary</u>	<u>Federal</u>	<u>Total</u>
2211 Supervision of Educational Media Services – Head of Component				
100 Personnel Services – Salaries				
100 Personnel Services – Salaries	64,180.45	59,243.50		123,423.95
Total Personnel Services – Salaries	\$64,180.45	\$59,243.50		\$123,423.95
200 Personnel Services – Employee Benefits				
210 Group Insurance – Contracted Provider	73.13	67.51		140.64
220 Social Security Contributions	4,629.58	4,273.46		8,903.04
230 PSERS Retirement Contributions	21,556.16	19,898.00		41,454.16
270 Group Insurance – Self-Insurance	8,352.27	7,709.79		16,062.06
292 Health Savings Accounts	858.00	792.00		1,650.00
Total Personnel Services – Employee Benefits	\$35,469.14	\$32,740.76		\$68,209.90
Total 2211 Supervision of Educational Media Services – Head of Component	\$99,649.59	\$91,984.26		\$191,633.85

General Fund (10)

	<u>Elementary</u>	<u>Secondary</u>	<u>Federal</u>	<u>Total</u>
2220 Technology Support Services				
100 Personnel Services – Salaries				
100 Personnel Services – Salaries	462,873.33	422,662.84		885,536.17
Total Personnel Services – Salaries	\$462,873.33	\$422,662.84		\$885,536.17
200 Personnel Services – Employee Benefits				
210 Group Insurance – Contracted Provider	1,174.80	1,084.42		2,259.22
220 Social Security Contributions	34,444.73	31,449.81		65,894.54
230 PSERS Retirement Contributions	157,155.96	143,501.40		300,657.36
260 Workers' Compensation	3,213.91	2,966.69		6,180.60
270 Group Insurance – Self-Insurance	104,951.45	96,878.25		201,829.70
292 Health Savings Accounts	4,439.06	4,097.59		8,536.65
Total Personnel Services – Employee Benefits	\$305,379.91	\$279,978.16		\$585,358.07
300 Purchased Professional and Technical Services				
340 Technical Services	1,438.74	1,328.06		2,766.80
Total Purchased Professional and Technical Services	\$1,438.74	\$1,328.06		\$2,766.80
400 Purchased Property Services				
430 Repairs and Maintenance Services	3,487.15	3,218.90		6,706.05
Total Purchased Property Services	\$3,487.15	\$3,218.90		\$6,706.05
500 Other Purchased Services				
530 Communications	1,635.32	1,509.53		3,144.85
580 Travel	2,287.96	2,111.97		4,399.93
Total Other Purchased Services	\$3,923.28	\$3,621.50		\$7,544.78
600 Supplies				
610 General Supplies	322.88	298.04		620.92
650 Supplies & Fees – Technology Related	168,252.52	155,310.01	10,996.80	334,559.33
Total Supplies	\$168,575.40	\$155,608.05	\$10,996.80	\$335,180.25
800 Other Objects				
810 Dues and Fees	88.40	81.60		170.00
Total Other Objects	\$88.40	\$81.60		\$170.00
Total 2220 Technology Support Services	\$945,766.21	\$866,499.11	\$10,996.80	\$1,823,262.12

General Fund (10)

2250 School Library Services

	<u>Elementary</u>	<u>Secondary</u>	<u>Federal</u>	<u>Total</u>
100 Personnel Services – Salaries				
100 Personnel Services – Salaries	417,402.59	228,310.44		645,713.03
Total Personnel Services – Salaries	\$417,402.59	\$228,310.44		\$645,713.03
200 Personnel Services – Employee Benefits				
210 Group Insurance – Contracted Provider	430.95	193.92		624.87
220 Social Security Contributions	31,304.08	17,215.51		48,519.59
230 PSERS Retirement Contributions	141,823.20	77,416.24		219,239.44
270 Group Insurance – Self-Insurance	70,813.22	34,246.68		105,059.90
292 Health Savings Accounts	4,800.00	2,474.96		7,274.96
Total Personnel Services – Employee Benefits	\$249,171.45	\$131,547.31		\$380,718.76
300 Purchased Professional and Technical Services				
329 Professional Educational Services – Other	4,824.00	1,005.00		5,829.00
Total Purchased Professional and Technical Services	\$4,824.00	\$1,005.00		\$5,829.00
600 Supplies				
610 General Supplies	3,619.29	4,351.65		7,970.94
640 Books and Periodicals	24,897.48	18,067.72		42,965.20
650 Supplies & Fees – Technology Related	53,347.82	27,409.59		80,757.41
Total Supplies	\$81,864.59	\$49,828.96		\$131,693.55
700 Property				
752 Capital Equipment – Original and Additional		8,067.32		8,067.32
Total Property		\$8,067.32		\$8,067.32
Total 2250 School Library Services	\$753,262.63	\$418,759.03		\$1,172,021.66

General Fund (10)

2260 Instruction and Curriculum Development Services

	<u>Elementary</u>	<u>Secondary</u>	<u>Federal</u>	<u>Total</u>
100 Personnel Services – Salaries				
100 Personnel Services – Salaries	598,806.41	494,377.52		1,093,183.93
Total Personnel Services – Salaries	\$598,806.41	\$494,377.52		\$1,093,183.93
200 Personnel Services – Employee Benefits				
210 Group Insurance – Contracted Provider	783.88	628.60		1,412.48
220 Social Security Contributions	44,521.47	36,719.06		81,240.53
230 PSERS Retirement Contributions	201,551.56	166,625.51		368,177.07
270 Group Insurance – Self-Insurance	92,219.24	79,310.71		171,529.95
292 Health Savings Accounts	6,520.01	6,208.57		12,728.58
Total Personnel Services – Employee Benefits	\$345,596.16	\$289,492.45		\$635,088.61
500 Other Purchased Services				
530 Communications	30.76	28.40		59.16
580 Travel	3,624.06	2,889.86		6,513.92
Total Other Purchased Services	\$3,654.82	\$2,918.26		\$6,573.08
600 Supplies				
610 General Supplies	1,693.55	1,563.28		3,256.83
630 Food	2,132.54	713.43		2,845.97
640 Books and Periodicals	375.85	21.55		397.40
650 Supplies & Fees – Technology Related	22,524.16	20,791.53		43,315.69
Total Supplies	\$26,726.10	\$23,089.79		\$49,815.89
800 Other Objects				
810 Dues and Fees	438.33	404.62		842.95
Total Other Objects	\$438.33	\$404.62		\$842.95
Total 2260 Instruction and Curriculum Development Services	\$975,221.82	\$810,282.64		\$1,785,504.46

General Fund (10)

2270 Instructional Staff Professional Development Services	<u>Elementary</u>	<u>Secondary</u>	<u>Federal</u>	<u>Total</u>
100 Personnel Services – Salaries				
100 Personnel Services – Salaries	8,553.34	10,043.64		18,596.98
Total Personnel Services – Salaries	\$8,553.34	\$10,043.64		\$18,596.98
200 Personnel Services – Employee Benefits				
220 Social Security Contributions	641.20	745.02		1,386.22
230 PSERS Retirement Contributions	2,908.09	3,414.80		6,322.89
240 Tuition Reimbursement	206,267.73	260,233.58		466,501.31
Total Personnel Services – Employee Benefits	\$209,817.02	\$264,393.40		\$474,210.42
300 Purchased Professional and Technical Services				
322 Professional Educational Services – Ius	9,500.00	9,500.00		19,000.00
360 Employee Training and Development Services	13,451.59	13,625.72		27,077.31
Total Purchased Professional and Technical Services	\$22,951.59	\$23,125.72		\$46,077.31
500 Other Purchased Services				
580 Travel	2,048.22	4,906.23		6,954.45
Total Other Purchased Services	\$2,048.22	\$4,906.23		\$6,954.45
600 Supplies				
640 Books and Periodicals	2,953.52	2,219.81	1,537.59	6,710.92
650 Supplies & Fees – Technology Related	16,648.54	16,648.54		33,297.08
Total Supplies	\$19,602.06	\$18,868.35	\$1,537.59	\$40,008.00
Total 2270 Instructional Staff Professional Development Services	\$262,972.23	\$321,337.34	\$1,537.59	\$585,847.16

General Fund (10)

	<u>Elementary</u>	<u>Secondary</u>	<u>Federal</u>	<u>Total</u>
2300 Support Services – Administration				
100 Personnel Services – Salaries				
100 Personnel Services – Salaries	1,392,261.79	1,269,811.18		3,400,330.91
Total Personnel Services – Salaries	\$1,392,261.79	\$1,269,811.18		\$3,400,330.91
200 Personnel Services – Employee Benefits				
210 Group Insurance – Contracted Provider	2,587.81	3,822.03		8,331.00
220 Social Security Contributions	102,969.11	94,390.77		248,673.15
230 PSERS Retirement Contributions	467,961.73	411,771.62		1,128,689.05
260 Workers' Compensation	4,362.19	11,804.75		23,897.66
270 Group Insurance – Self-Insurance	257,470.70	294,925.28		659,197.27
291 Other Retirement Plans	47,868.48			58,448.48
292 Health Savings Accounts	14,591.52	18,285.81		40,162.08
299 All Other Employee Benefits				676.20
Total Personnel Services – Employee Benefits	\$897,811.54	\$835,000.26		\$2,168,074.89
300 Purchased Professional and Technical Services				
310 Official / Administrative Services				143,312.64
330 Other Professional Services	9,415.85	2,693.40		192,904.53
340 Technical Services				100.00
390 Other Purchased Professional and Technical Services		250.00		686.16
Total Purchased Professional and Technical Services	\$9,415.85	\$2,943.40		\$337,003.33
500 Other Purchased Services				
520 Insurance – General				416.00
530 Communications	219.92	4,784.86		29,162.10
549 Other Advertising/Public Relations				518.28
550 Printing and Binding				6,081.43
580 Travel	184.66	570.32		3,290.01
Total Other Purchased Services	\$404.58	\$5,355.18		\$39,467.82
600 Supplies				
610 General Supplies	1,800.58	12,673.79		30,331.00
630 Food	4,955.24	1,699.77		9,630.69
640 Books and Periodicals	1,614.21	1,287.70		3,025.29
650 Supplies & Fees – Technology Related	536.98	179.00		12,137.47
Total Supplies	\$8,907.01	\$15,840.26		\$55,124.45
800 Other Objects				
810 Dues and Fees	2,023.00	3,230.00		47,021.88
820 Claims and Judgments Against the LEA				123,005.00
890 Miscellaneous Expenditures		400.00		400.00
Total Other Objects	\$2,023.00	\$3,630.00		\$170,426.88
Total 2300 Support Services – Administration	\$2,310,823.77	\$2,132,580.28		\$6,170,428.28

General Fund (10)

2310 Board Services

Elementary

Secondary

Federal

Total

500 Other Purchased Services

549 Other Advertising/Public Relations

518.28

Total Other Purchased Services

\$518.28

600 Supplies

610 General Supplies

1,787.51

630 Food

1,231.18

650 Supplies & Fees – Technology Related

2,700.00

Total Supplies

\$5,718.69

800 Other Objects

810 Dues and Fees

18,391.81

820 Claims and Judgments Against the LEA

123,005.00

Total Other Objects

\$141,396.81

Total 2310 Board Services

\$147,633.78

General Fund (10)

	<u>Elementary</u>	<u>Secondary</u>	<u>Federal</u>	<u>Total</u>
2330 Tax Assessment and Collection Services				
100 Personnel Services – Salaries				
100 Personnel Services – Salaries				33,248.16
Total Personnel Services – Salaries				\$33,248.16
200 Personnel Services – Employee Benefits				
210 Group Insurance – Contracted Provider				26.64
220 Social Security Contributions				2,503.17
230 PSERS Retirement Contributions				11,296.52
270 Group Insurance – Self-Insurance				4,370.22
292 Health Savings Accounts				412.54
Total Personnel Services – Employee Benefits				\$18,609.09
300 Purchased Professional and Technical Services				
310 Official / Administrative Services				143,312.64
Total Purchased Professional and Technical Services				\$143,312.64
500 Other Purchased Services				
520 Insurance – General				416.00
530 Communications				9,237.32
550 Printing and Binding				6,081.43
Total Other Purchased Services				\$15,734.75
600 Supplies				
650 Supplies & Fees – Technology Related				8,710.00
Total Supplies				\$8,710.00
800 Other Objects				
810 Dues and Fees				17,655.07
Total Other Objects				\$17,655.07
Total 2330 Tax Assessment and Collection Services				\$237,269.71

General Fund (10)

2350 Legal and Accounting Services

Elementary

Secondary

Federal

Total

300 Purchased Professional and Technical Services

330 Other Professional Services

180,795.28

Total Purchased Professional and Technical Services

\$180,795.28

Total 2350 Legal and Accounting Services

\$180,795.28

General Fund (10)

2370 Community Relations Services

Elementary

Secondary

Federal

Total

100 Personnel Services – Salaries

100 Personnel Services – Salaries

38,903.92

Total Personnel Services – Salaries

\$38,903.92

200 Personnel Services – Employee Benefits

210 Group Insurance – Contracted Provider

48.44

220 Social Security Contributions

2,853.76

230 PSERS Retirement Contributions

12,989.35

270 Group Insurance – Self-Insurance

13,991.55

Total Personnel Services – Employee Benefits

\$29,883.10

Total 2370 Community Relations Services

\$68,787.02

General Fund (10)

	<u>Elementary</u>	<u>Secondary</u>	<u>Federal</u>	<u>Total</u>
2380 Office of the Principal Services				
100 Personnel Services – Salaries				
100 Personnel Services – Salaries	1,392,261.79	1,269,811.18		2,662,072.97
Total Personnel Services – Salaries	\$1,392,261.79	\$1,269,811.18		\$2,662,072.97
200 Personnel Services – Employee Benefits				
210 Group Insurance – Contracted Provider	2,587.81	3,822.03		6,409.84
220 Social Security Contributions	102,969.11	94,390.77		197,359.88
230 PSERS Retirement Contributions	467,961.73	411,771.62		879,733.35
260 Workers' Compensation	4,362.19	11,804.75		16,166.94
270 Group Insurance – Self-Insurance	257,470.70	294,925.28		552,395.98
291 Other Retirement Plans	47,868.48			47,868.48
292 Health Savings Accounts	14,591.52	18,285.81		32,877.33
Total Personnel Services – Employee Benefits	\$897,811.54	\$835,000.26		\$1,732,811.80
300 Purchased Professional and Technical Services				
330 Other Professional Services	9,415.85	2,693.40		12,109.25
390 Other Purchased Professional and Technical Services		250.00		250.00
Total Purchased Professional and Technical Services	\$9,415.85	\$2,943.40		\$12,359.25
500 Other Purchased Services				
530 Communications	36.55	4,615.59		4,652.14
580 Travel	184.66	570.32		754.98
Total Other Purchased Services	\$221.21	\$5,185.91		\$5,407.12
600 Supplies				
610 General Supplies	1,800.58	12,673.79		14,474.37
630 Food	4,955.24	1,699.77		6,655.01
640 Books and Periodicals	1,614.21	1,287.70		2,901.91
650 Supplies & Fees – Technology Related	536.98	179.00		715.98
Total Supplies	\$8,907.01	\$15,840.26		\$24,747.27
800 Other Objects				
810 Dues and Fees	2,023.00	3,230.00		5,253.00
890 Miscellaneous Expenditures		400.00		400.00
Total Other Objects	\$2,023.00	\$3,630.00		\$5,653.00
Total 2380 Office of the Principal Services	\$2,310,640.40	\$2,132,411.01		\$4,443,051.41

General Fund (10)

	<u>Elementary</u>	<u>Secondary</u>	<u>Federal</u>	<u>Total</u>
2390 Other Administration Services				
200 Personnel Services – Employee Benefits				
299 All Other Employee Benefits				676.20
Total Personnel Services – Employee Benefits				\$676.20
300 Purchased Professional and Technical Services				
340 Technical Services				100.00
390 Other Purchased Professional and Technical Services				436.16
Total Purchased Professional and Technical Services				\$536.16
500 Other Purchased Services				
530 Communications				14,920.00
Total Other Purchased Services				\$14,920.00
600 Supplies				
610 General Supplies				11,380.21
630 Food				165.74
Total Supplies				\$11,545.95
Total 2390 Other Administration Services				\$27,678.31

General Fund (10)

	<u>Elementary</u>	<u>Secondary</u>	<u>Federal</u>	<u>Total</u>
2400 Support Services – Pupil Health				
100 Personnel Services – Salaries				
100 Personnel Services – Salaries				957,405.12
Total Personnel Services – Salaries				\$957,405.12
200 Personnel Services – Employee Benefits				
210 Group Insurance – Contracted Provider				1,410.71
220 Social Security Contributions				70,536.32
230 PSERS Retirement Contributions				316,681.66
250 Unemployment Compensation				9,459.00
270 Group Insurance – Self-Insurance				223,967.89
292 Health Savings Accounts				6,599.92
Total Personnel Services – Employee Benefits				\$628,655.50
300 Purchased Professional and Technical Services				
322 Professional Educational Services – lus				43,397.50
330 Other Professional Services				239,879.53
Total Purchased Professional and Technical Services				\$283,277.03
500 Other Purchased Services				
580 Travel				834.59
Total Other Purchased Services				\$834.59
600 Supplies				
610 General Supplies				53,109.47
630 Food				89.04
Total Supplies				\$53,198.51
Total 2400 Support Services – Pupil Health				\$1,923,370.75

General Fund (10)

2420 Medical Services

	<u>Elementary</u>	<u>Secondary</u>	<u>Federal</u>	<u>Total</u>
100 <u>Personnel Services – Salaries</u>				
100 Personnel Services – Salaries				155,665.16
Total Personnel Services – Salaries				\$155,665.16
200 <u>Personnel Services – Employee Benefits</u>				
210 Group Insurance – Contracted Provider				228.34
220 Social Security Contributions				11,288.98
230 PSERS Retirement Contributions				52,883.61
270 Group Insurance – Self-Insurance				35,568.30
292 Health Savings Accounts				2,150.00
Total Personnel Services – Employee Benefits				\$102,119.23
300 <u>Purchased Professional and Technical Services</u>				
322 Professional Educational Services – lus				43,397.50
330 Other Professional Services				144,014.03
Total Purchased Professional and Technical Services				\$187,411.53
500 <u>Other Purchased Services</u>				
580 Travel				550.58
Total Other Purchased Services				\$550.58
Total 2420 Medical Services				\$445,746.50

General Fund (10)

2440 Nursing Services

	<u>Elementary</u>	<u>Secondary</u>	<u>Federal</u>	<u>Total</u>
100 Personnel Services – Salaries				
100 Personnel Services – Salaries				801,739.96
Total Personnel Services – Salaries				\$801,739.96
200 Personnel Services – Employee Benefits				
210 Group Insurance – Contracted Provider				1,182.37
220 Social Security Contributions				59,247.34
230 PSERS Retirement Contributions				263,798.05
250 Unemployment Compensation				9,459.00
270 Group Insurance – Self-Insurance				188,399.59
292 Health Savings Accounts				4,449.92
Total Personnel Services – Employee Benefits				\$526,536.27
300 Purchased Professional and Technical Services				
330 Other Professional Services				95,865.50
Total Purchased Professional and Technical Services				\$95,865.50
500 Other Purchased Services				
580 Travel				284.01
Total Other Purchased Services				\$284.01
600 Supplies				
610 General Supplies				51,837.82
630 Food				89.04
Total Supplies				\$51,926.86
Total 2440 Nursing Services				\$1,476,352.60

LEA : 113364503 Manheim Township SD

Printed 10/31/2024 9:22:17 AM

General Fund (10)

2450 Nonpublic Health Services

Elementary

Secondary

Federal

Total

600 Supplies

610 General Supplies

1,271.65

Total Supplies

\$1,271.65

Total 2450 Nonpublic Health Services

\$1,271.65

General Fund (10)

	<u>Elementary</u>	<u>Secondary</u>	<u>Federal</u>	<u>Total</u>
2500 Support Services – Business				
100 Personnel Services – Salaries				
100 Personnel Services – Salaries				417,235.31
Total Personnel Services – Salaries				\$417,235.31
200 Personnel Services – Employee Benefits				
210 Group Insurance – Contracted Provider				536.76
220 Social Security Contributions				30,870.01
230 PSERS Retirement Contributions				135,835.73
270 Group Insurance – Self-Insurance				75,163.52
292 Health Savings Accounts				6,187.40
Total Personnel Services – Employee Benefits				\$248,593.42
300 Purchased Professional and Technical Services				
330 Other Professional Services				37,672.06
390 Other Purchased Professional and Technical Services				7,221.50
Total Purchased Professional and Technical Services				\$44,893.56
500 Other Purchased Services				
530 Communications				7,879.79
550 Printing and Binding				5,961.38
580 Travel				1,054.57
Total Other Purchased Services				\$14,895.74
600 Supplies				
610 General Supplies				9,229.63
650 Supplies & Fees – Technology Related				30,809.63
Total Supplies				\$40,039.26
800 Other Objects				
810 Dues and Fees				26,022.83
Total Other Objects				\$26,022.83
Total 2500 Support Services – Business				\$791,680.12

General Fund (10)

2510 Fiscal Services	<u>Elementary</u>	<u>Secondary</u>	<u>Federal</u>	<u>Total</u>
100 Personnel Services – Salaries				
100 Personnel Services – Salaries				315,049.58
Total Personnel Services – Salaries				\$315,049.58
200 Personnel Services – Employee Benefits				
210 Group Insurance – Contracted Provider				431.52
220 Social Security Contributions				23,280.62
230 PSERS Retirement Contributions				105,846.15
270 Group Insurance – Self-Insurance				66,201.14
292 Health Savings Accounts				5,362.44
Total Personnel Services – Employee Benefits				\$201,121.87
500 Other Purchased Services				
530 Communications				5,802.09
580 Travel				1,054.57
Total Other Purchased Services				\$6,856.66
600 Supplies				
610 General Supplies				9,229.63
650 Supplies & Fees – Technology Related				28,919.63
Total Supplies				\$38,149.26
800 Other Objects				
810 Dues and Fees				26,022.83
Total Other Objects				\$26,022.83
Total 2510 Fiscal Services				\$587,200.20

General Fund (10)

	<u>Elementary</u>	<u>Secondary</u>	<u>Federal</u>	<u>Total</u>
2511 Supervision of Fiscal Services - Head of Component				
100 <u>Personnel Services – Salaries</u>				
100 Personnel Services – Salaries				102,132.20
Total Personnel Services – Salaries				\$102,132.20
200 <u>Personnel Services – Employee Benefits</u>				
210 Group Insurance – Contracted Provider				53.28
220 Social Security Contributions				7,836.27
230 PSERS Retirement Contributions				34,248.98
270 Group Insurance – Self-Insurance				8,740.26
292 Health Savings Accounts				824.96
Total Personnel Services – Employee Benefits				\$51,703.75
500 <u>Other Purchased Services</u>				
580 Travel				821.67
Total Other Purchased Services				\$821.67
800 <u>Other Objects</u>				
810 Dues and Fees				405.00
Total Other Objects				\$405.00
Total 2511 Supervision of Fiscal Services - Head of Component				\$155,062.62

General Fund (10)

2514 Payroll Services

	<u>Elementary</u>	<u>Secondary</u>	<u>Federal</u>	<u>Total</u>
100 Personnel Services – Salaries				
100 Personnel Services – Salaries				99,674.57
Total Personnel Services – Salaries				\$99,674.57
200 Personnel Services – Employee Benefits				
210 Group Insurance – Contracted Provider				210.96
220 Social Security Contributions				6,996.75
230 PSERS Retirement Contributions				33,705.65
270 Group Insurance – Self-Insurance				27,584.42
292 Health Savings Accounts				2,475.06
Total Personnel Services – Employee Benefits				\$70,972.84
600 Supplies				
610 General Supplies				499.32
Total Supplies				\$499.32
800 Other Objects				
810 Dues and Fees				17.85
Total Other Objects				\$17.85
Total 2514 Payroll Services				\$171,164.58

General Fund (10)

	<u>Elementary</u>	<u>Secondary</u>	<u>Federal</u>	<u>Total</u>
2515 Financial Accounting Services				
100 Personnel Services – Salaries				
100 Personnel Services – Salaries				113,242.81
Total Personnel Services – Salaries				\$113,242.81
200 Personnel Services – Employee Benefits				
210 Group Insurance – Contracted Provider				167.28
220 Social Security Contributions				8,447.60
230 PSERS Retirement Contributions				37,891.52
270 Group Insurance – Self-Insurance				29,876.46
292 Health Savings Accounts				2,062.42
Total Personnel Services – Employee Benefits				\$78,445.28
500 Other Purchased Services				
530 Communications				5,802.09
580 Travel				232.90
Total Other Purchased Services				\$6,034.99
600 Supplies				
610 General Supplies				8,730.31
650 Supplies & Fees – Technology Related				28,919.63
Total Supplies				\$37,649.94
800 Other Objects				
810 Dues and Fees				3,099.00
Total Other Objects				\$3,099.00
Total 2515 Financial Accounting Services				\$238,472.02

LEA : 113364503 Manheim Township SD

Printed 10/31/2024 9:22:17 AM

General Fund (10)

2519 Other Fiscal Services

Elementary

Secondary

Federal

Total

800 Other Objects

810 Dues and Fees

22,500.98

Total Other Objects

\$22,500.98

Total 2519 Other Fiscal Services

\$22,500.98

General Fund (10)

2520 Purchasing Services

Elementary

Secondary

Federal

Total

100 Personnel Services – Salaries

100 Personnel Services – Salaries

61,695.93

Total Personnel Services – Salaries

\$61,695.93

200 Personnel Services – Employee Benefits

210 Group Insurance – Contracted Provider

105.24

220 Social Security Contributions

4,491.92

230 PSERS Retirement Contributions

20,623.47

270 Group Insurance – Self-Insurance

8,962.38

292 Health Savings Accounts

824.96

Total Personnel Services – Employee Benefits

\$35,007.97

Total 2520 Purchasing Services

\$96,703.90

General Fund (10)

	<u>Elementary</u>	<u>Secondary</u>	<u>Federal</u>	<u>Total</u>
2530 Warehousing and Distributing Services				
100 Personnel Services – Salaries				
100 Personnel Services – Salaries				21,303.80
Total Personnel Services – Salaries				\$21,303.80
200 Personnel Services – Employee Benefits				
220 Social Security Contributions				1,629.74
230 PSERS Retirement Contributions				3,398.45
Total Personnel Services – Employee Benefits				\$5,028.19
300 Purchased Professional and Technical Services				
330 Other Professional Services				7,875.18
Total Purchased Professional and Technical Services				\$7,875.18
Total 2530 Warehousing and Distributing Services				\$34,207.17

General Fund (10)

	<u>Elementary</u>	<u>Secondary</u>	<u>Federal</u>	<u>Total</u>
2540 Printing, Publishing and Duplicating Services				
300 <u>Purchased Professional and Technical Services</u>				
390 Other Purchased Professional and Technical Services				3,600.00
Total Purchased Professional and Technical Services				\$3,600.00
500 <u>Other Purchased Services</u>				
530 Communications				2,077.70
550 Printing and Binding				5,961.38
Total Other Purchased Services				\$8,039.08
600 <u>Supplies</u>				
650 Supplies & Fees – Technology Related				1,890.00
Total Supplies				\$1,890.00
Total 2540 Printing, Publishing and Duplicating Services				\$13,529.08

General Fund (10)

	<u>Elementary</u>	<u>Secondary</u>	<u>Federal</u>	<u>Total</u>
2590 Other Support Services – Business				
100 Personnel Services – Salaries				
100 Personnel Services – Salaries				19,186.00
Total Personnel Services – Salaries				\$19,186.00
200 Personnel Services – Employee Benefits				
220 Social Security Contributions				1,467.73
230 PSERS Retirement Contributions				5,967.66
Total Personnel Services – Employee Benefits				\$7,435.39
300 Purchased Professional and Technical Services				
330 Other Professional Services				29,796.88
390 Other Purchased Professional and Technical Services				3,621.50
Total Purchased Professional and Technical Services				\$33,418.38
Total 2590 Other Support Services – Business				\$60,039.77

General Fund (10)

	<u>Elementary</u>	<u>Secondary</u>	<u>Federal</u>	<u>Total</u>
2600 Operation and Maintenance of Plant Services				
800 Other Objects				
810 Dues and Fees				992.10
Total Other Objects				\$992.10
Total 2600 Operation and Maintenance of Plant Services	\$349,072.86	\$406,853.50		\$10,155,792.26

General Fund (10)

	<u>Elementary</u>	<u>Secondary</u>	<u>Federal</u>	<u>Total</u>
2610 Supervision of Operation and Maintenance of Plant Services				
100 Personnel Services – Salaries				
100 Personnel Services – Salaries				326,805.57
Total Personnel Services – Salaries				\$326,805.57
200 Personnel Services – Employee Benefits				
210 Group Insurance – Contracted Provider				396.24
220 Social Security Contributions				24,684.65
230 PSERS Retirement Contributions				109,951.36
270 Group Insurance – Self-Insurance				57,982.08
292 Health Savings Accounts				3,135.98
Total Personnel Services – Employee Benefits				\$196,150.31
Total 2610 Supervision of Operation and Maintenance of Plant Services				\$522,955.88

General Fund (10)

	<u>Elementary</u>	<u>Secondary</u>	<u>Federal</u>	<u>Total</u>
2611 Supervision of Operation and Maintenance of Plant Services – Head of Component				
100 Personnel Services – Salaries				
100 Personnel Services – Salaries				151,004.57
Total Personnel Services – Salaries				\$151,004.57
200 Personnel Services – Employee Benefits				
210 Group Insurance – Contracted Provider				137.64
220 Social Security Contributions				11,474.45
230 PSERS Retirement Contributions				50,859.04
270 Group Insurance – Self-Insurance				24,532.20
292 Health Savings Accounts				1,389.98
Total Personnel Services – Employee Benefits				\$88,393.31
Total 2611 Supervision of Operation and Maintenance of Plant Services – Head of Component				\$239,397.88

General Fund (10)

2619 Supervision of Operation and Maintenance of Plant Services – All Other Supervision

Elementary

Secondary

Federal

Total

100 Personnel Services – Salaries

100 Personnel Services – Salaries

175,801.00

Total Personnel Services – Salaries

\$175,801.00

200 Personnel Services – Employee Benefits

210 Group Insurance – Contracted Provider

258.60

220 Social Security Contributions

13,210.20

230 PSERS Retirement Contributions

59,092.32

270 Group Insurance – Self-Insurance

33,449.88

292 Health Savings Accounts

1,746.00

Total Personnel Services – Employee Benefits

\$107,757.00

Total 2619 Supervision of Operation and Maintenance of Plant Services – All Other Supervision

\$283,558.00

General Fund (10)

	<u>Elementary</u>	<u>Secondary</u>	<u>Federal</u>	<u>Total</u>
2620 Operation of Buildings Services				
100 Personnel Services – Salaries				
100 Personnel Services – Salaries				2,016,511.90
Total Personnel Services – Salaries				\$2,016,511.90
200 Personnel Services – Employee Benefits				
210 Group Insurance – Contracted Provider				5,946.95
220 Social Security Contributions				148,185.12
230 PSERS Retirement Contributions				676,058.08
260 Workers' Compensation				11,794.81
270 Group Insurance – Self-Insurance				645,318.18
292 Health Savings Accounts				21,400.69
Total Personnel Services – Employee Benefits				\$1,508,703.83
300 Purchased Professional and Technical Services				
340 Technical Services				1,491.40
350 Security / Safety Services				15,002.00
Total Purchased Professional and Technical Services				\$16,493.40
400 Purchased Property Services				
410 Cleaning Services				275,890.45
420 Utility Services				127,393.18
430 Repairs and Maintenance Services				1,026,393.21
440 Rentals				4,491.19
460 Extermination Services				7,395.37
Total Purchased Property Services				\$1,441,563.40
500 Other Purchased Services				
523 General Property and Liability Insurance				557,312.00
530 Communications				135,057.24
549 Other Advertising/Public Relations				931.86
550 Printing and Binding				430.05
580 Travel				242.14
Total Other Purchased Services				\$693,973.29
600 Supplies				
610 General Supplies	311,437.70	347,967.19		659,404.89
620 Energy				1,413,566.43
630 Food				749.60
650 Supplies & Fees – Technology Related				10,404.63
Total Supplies	\$311,437.70	\$347,967.19		\$2,084,125.55
700 Property				
752 Capital Equipment – Original and Additional				13,500.00
Total Property				\$13,500.00
800 Other Objects				
810 Dues and Fees				140.00
Total Other Objects				\$140.00
Total 2620 Operation of Buildings Services	\$311,437.70	\$347,967.19		\$7,775,011.37

General Fund (10)

	<u>Elementary</u>	<u>Secondary</u>	<u>Federal</u>	<u>Total</u>
2640 Care and Upkeep of Equipment Services				
400 <u>Purchased Property Services</u>				
430 Repairs and Maintenance Services				45,624.85
440 Rentals				835.00
Total Purchased Property Services				\$46,459.85
600 <u>Supplies</u>				
610 General Supplies	6,326.94	5,773.21		12,100.15
620 Energy				29.99
Total Supplies	\$6,326.94	\$5,773.21		\$12,130.14
Total 2640 Care and Upkeep of Equipment Services	\$6,326.94	\$5,773.21		\$58,589.99

General Fund (10)

	<u>Elementary</u>	<u>Secondary</u>	<u>Federal</u>	<u>Total</u>
2650 Vehicle Operation and Maintenance Services (Other Than Student Transportation Vehicles)				
400 <u>Purchased Property Services</u>				
430 Repairs and Maintenance Services				6,103.89
440 Rentals				30,385.18
Total Purchased Property Services				\$36,489.07
600 <u>Supplies</u>				
610 General Supplies	1,214.01	1,120.63		2,334.64
620 Energy				11,328.01
Total Supplies	\$1,214.01	\$1,120.63		\$13,662.65
700 <u>Property</u>				
739 Leases - Other				321,861.00
Total Property				\$321,861.00
Total 2650 Vehicle Operation and Maintenance Services (Other Than Student Transportation Vehicles)	\$1,214.01	\$1,120.63		\$372,012.72

General Fund (10)

	<u>Elementary</u>	<u>Secondary</u>	<u>Federal</u>	<u>Total</u>
2660 Safety and Security Services				
100 Personnel Services – Salaries				
100 Personnel Services – Salaries				399,854.84
Total Personnel Services – Salaries				\$399,854.84
200 Personnel Services – Employee Benefits				
210 Group Insurance – Contracted Provider				657.68
220 Social Security Contributions				29,654.10
230 PSERS Retirement Contributions				126,364.92
270 Group Insurance – Self-Insurance				92,071.29
292 Health Savings Accounts				4,459.96
Total Personnel Services – Employee Benefits				\$253,207.95
300 Purchased Professional and Technical Services				
330 Other Professional Services				8,660.42
350 Security / Safety Services				179,215.44
Total Purchased Professional and Technical Services				\$187,875.86
500 Other Purchased Services				
580 Travel				499.04
Total Other Purchased Services				\$499.04
600 Supplies				
610 General Supplies	5,689.47	5,251.81		10,941.28
630 Food				279.93
650 Supplies & Fees – Technology Related				6,348.66
Total Supplies	\$5,689.47	\$5,251.81		\$17,569.87
Total 2660 Safety and Security Services	\$5,689.47	\$5,251.81		\$859,007.56

General Fund (10)

	<u>Elementary</u>	<u>Secondary</u>	<u>Federal</u>	<u>Total</u>
2700 Student Transportation Services				
100 Personnel Services – Salaries				
100 Personnel Services – Salaries				124,773.59
Total Personnel Services – Salaries				\$124,773.59
200 Personnel Services – Employee Benefits				
210 Group Insurance – Contracted Provider				210.48
220 Social Security Contributions				9,310.27
230 PSERS Retirement Contributions				41,935.22
270 Group Insurance – Self-Insurance				29,492.52
292 Health Savings Accounts				2,070.00
Total Personnel Services – Employee Benefits				\$83,018.49
400 Purchased Property Services				
430 Repairs and Maintenance Services				6,085.14
440 Rentals				4,030.08
Total Purchased Property Services				\$10,115.22
500 Other Purchased Services				
513 Contracted Carriers				4,554,946.72
516 Student Transportation Services From the IU				190,958.36
530 Communications				4.69
580 Travel				958.38
Total Other Purchased Services				\$4,746,868.15
600 Supplies				
610 General Supplies				4,881.25
620 Energy				89,530.99
630 Food				411.70
650 Supplies & Fees – Technology Related				6,177.43
Total Supplies				\$101,001.37
800 Other Objects				
810 Dues and Fees				1,571.19
Total Other Objects				\$1,571.19
Total 2700 Student Transportation Services				\$5,067,348.01

General Fund (10)

	<u>Elementary</u>	<u>Secondary</u>	<u>Federal</u>	<u>Total</u>
2710 Supervision of Student Transportation Services				
100 Personnel Services – Salaries				
100 Personnel Services – Salaries				113,486.99
Total Personnel Services – Salaries				\$113,486.99
200 Personnel Services – Employee Benefits				
210 Group Insurance – Contracted Provider				194.64
220 Social Security Contributions				8,468.47
230 PSERS Retirement Contributions				38,097.88
270 Group Insurance – Self-Insurance				26,475.42
292 Health Savings Accounts				1,822.50
Total Personnel Services – Employee Benefits				\$75,058.91
500 Other Purchased Services				
530 Communications				4.69
580 Travel				958.38
Total Other Purchased Services				\$963.07
600 Supplies				
610 General Supplies				2,580.13
630 Food				411.70
Total Supplies				\$2,991.83
Total 2710 Supervision of Student Transportation Services				\$192,500.80

General Fund (10)

2711 Supervision of Student Transportation Services – Head of Component	<u>Elementary</u>	<u>Secondary</u>	<u>Federal</u>	<u>Total</u>
100 Personnel Services – Salaries				
100 Personnel Services – Salaries				113,486.99
Total Personnel Services – Salaries				\$113,486.99
200 Personnel Services – Employee Benefits				
210 Group Insurance – Contracted Provider				194.64
220 Social Security Contributions				8,468.47
230 PSERS Retirement Contributions				38,097.88
270 Group Insurance – Self-Insurance				26,475.42
292 Health Savings Accounts				1,822.50
Total Personnel Services – Employee Benefits				\$75,058.91
500 Other Purchased Services				
530 Communications				4.69
580 Travel				958.38
Total Other Purchased Services				\$963.07
600 Supplies				
610 General Supplies				2,580.13
630 Food				411.70
Total Supplies				\$2,991.83
Total 2711 Supervision of Student Transportation Services – Head of Component				\$192,500.80

General Fund (10)

2720 Vehicle Operation Services

Elementary

Secondary

Federal

Total

400 Purchased Property Services

430 Repairs and Maintenance Services

2,975.62

440 Rentals

4,030.08

Total Purchased Property Services

\$7,005.70

500 Other Purchased Services

513 Contracted Carriers

4,284,669.84

516 Student Transportation Services From the IU

190,958.36

Total Other Purchased Services

\$4,475,628.20

600 Supplies

610 General Supplies

2,301.12

620 Energy

4,917.67

650 Supplies & Fees – Technology Related

6,177.43

Total Supplies

\$13,396.22

800 Other Objects

810 Dues and Fees

1,571.19

Total Other Objects

\$1,571.19

Total 2720 Vehicle Operation Services

\$4,497,601.31

General Fund (10)

	<u>Elementary</u>	<u>Secondary</u>	<u>Federal</u>	<u>Total</u>
2740 Vehicle Servicing and Maintenance Services				
400 <u>Purchased Property Services</u>				
430 Repairs and Maintenance Services				3,109.52
Total Purchased Property Services				\$3,109.52
600 <u>Supplies</u>				
620 Energy				84,613.32
Total Supplies				\$84,613.32
Total 2740 Vehicle Servicing and Maintenance Services				\$87,722.84

General Fund (10)

2750 Nonpublic Transportation

Elementary

Secondary

Federal

Total

100 Personnel Services – Salaries

100 Personnel Services – Salaries

11,286.60

Total Personnel Services – Salaries

\$11,286.60

200 Personnel Services – Employee Benefits

210 Group Insurance – Contracted Provider

15.84

220 Social Security Contributions

841.80

230 PSERS Retirement Contributions

3,837.34

270 Group Insurance – Self-Insurance

3,017.10

292 Health Savings Accounts

247.50

Total Personnel Services – Employee Benefits

\$7,959.58

500 Other Purchased Services

513 Contracted Carriers

270,276.88

Total Other Purchased Services

\$270,276.88

Total 2750 Nonpublic Transportation

\$289,523.06

General Fund (10)

	<u>Elementary</u>	<u>Secondary</u>	<u>Federal</u>	<u>Total</u>
2800 Support Services – Central				
100 Personnel Services – Salaries				
100 Personnel Services – Salaries				405,429.28
Total Personnel Services – Salaries				\$405,429.28
200 Personnel Services – Employee Benefits				
210 Group Insurance – Contracted Provider				479.40
220 Social Security Contributions				29,945.48
230 PSERS Retirement Contributions				135,877.90
240 Tuition Reimbursement				15,873.00
270 Group Insurance – Self-Insurance				66,390.87
292 Health Savings Accounts				4,944.88
Total Personnel Services – Employee Benefits				\$253,511.53
300 Purchased Professional and Technical Services				
330 Other Professional Services				2,000.00
340 Technical Services				22,569.38
360 Employee Training and Development Services			7,785.00	62,956.32
390 Other Purchased Professional and Technical Services			11,624.16	21,292.06
Total Purchased Professional and Technical Services			\$19,409.16	\$108,817.76
500 Other Purchased Services				
530 Communications				65.32
549 Other Advertising/Public Relations				12,730.11
580 Travel			1,340.00	10,202.93
Total Other Purchased Services			\$1,340.00	\$22,998.36
600 Supplies				
610 General Supplies				2,175.81
630 Food				19,078.66
650 Supplies & Fees – Technology Related				76,446.43
Total Supplies				\$97,700.90
800 Other Objects				
810 Dues and Fees				3,537.33
Total Other Objects				\$3,537.33
Total 2800 Support Services – Central			\$20,749.16	\$891,995.16

General Fund (10)

2810 Planning, Research, Development and Evaluation Services

Elementary

Secondary

Federal

Total

300 Purchased Professional and Technical Services

340 Technical Services

22,569.38

Total Purchased Professional and Technical Services

\$22,569.38

Total 2810 Planning, Research, Development and Evaluation Services

\$22,569.38

General Fund (10)

2820 Information Services

Elementary

Secondary

Federal

Total

100 Personnel Services – Salaries

100 Personnel Services – Salaries

38,903.66

Total Personnel Services – Salaries

\$38,903.66

200 Personnel Services – Employee Benefits

210 Group Insurance – Contracted Provider

48.36

220 Social Security Contributions

2,853.48

230 PSERS Retirement Contributions

12,989.10

270 Group Insurance – Self-Insurance

13,991.37

Total Personnel Services – Employee Benefits

\$29,882.31

500 Other Purchased Services

530 Communications

30.18

549 Other Advertising/Public Relations

12,730.11

Total Other Purchased Services

\$12,760.29

600 Supplies

610 General Supplies

216.00

650 Supplies & Fees – Technology Related

1,400.00

Total Supplies

\$1,616.00

Total 2820 Information Services

\$83,162.26

General Fund (10)

	<u>Elementary</u>	<u>Secondary</u>	<u>Federal</u>	<u>Total</u>
2821 Supervision of Information Services				
100 Personnel Services – Salaries				
100 Personnel Services – Salaries				38,903.66
Total Personnel Services – Salaries				\$38,903.66
200 Personnel Services – Employee Benefits				
210 Group Insurance – Contracted Provider				48.36
220 Social Security Contributions				2,853.48
230 PSERS Retirement Contributions				12,989.10
270 Group Insurance – Self-Insurance				13,991.37
Total Personnel Services – Employee Benefits				\$29,882.31
500 Other Purchased Services				
530 Communications				30.18
Total Other Purchased Services				\$30.18
600 Supplies				
610 General Supplies				216.00
650 Supplies & Fees – Technology Related				1,400.00
Total Supplies				\$1,616.00
Total 2821 Supervision of Information Services				\$70,432.15

LEA : 113364503 Manheim Township SD

Printed 10/31/2024 9:22:17 AM

General Fund (10)

2823 Public Information Services

Elementary

Secondary

Federal

Total

500 Other Purchased Services

549 Other Advertising/Public Relations

12,730.11

Total Other Purchased Services

\$12,730.11

Total 2823 Public Information Services

\$12,730.11

General Fund (10)

2830 Staff Services

Elementary Secondary Federal Total

100	<u>Personnel Services – Salaries</u>			
	100 Personnel Services – Salaries			366,525.62
Total Personnel Services – Salaries				\$366,525.62
200	<u>Personnel Services – Employee Benefits</u>			
	210 Group Insurance – Contracted Provider			431.04
	220 Social Security Contributions			27,092.00
	230 PSERS Retirement Contributions			122,888.80
	240 Tuition Reimbursement			15,873.00
	270 Group Insurance – Self-Insurance			52,399.50
	292 Health Savings Accounts			4,944.88
Total Personnel Services – Employee Benefits				\$223,629.22
300	<u>Purchased Professional and Technical Services</u>			
	330 Other Professional Services			2,000.00
	360 Employee Training and Development Services		7,785.00	62,956.32
	390 Other Purchased Professional and Technical Services		11,624.16	21,292.06
Total Purchased Professional and Technical Services				\$19,409.16 \$86,248.38
500	<u>Other Purchased Services</u>			
	530 Communications			35.14
	580 Travel		1,340.00	10,202.93
Total Other Purchased Services				\$1,340.00 \$10,238.07
600	<u>Supplies</u>			
	610 General Supplies			1,959.81
	630 Food			19,078.66
	650 Supplies & Fees – Technology Related			75,046.43
Total Supplies				\$96,084.90
800	<u>Other Objects</u>			
	810 Dues and Fees			3,537.33
Total Other Objects				\$3,537.33
Total 2830 Staff Services				\$20,749.16 \$786,263.52

General Fund (10)

2831 Supervision of Staff Services

Elementary

Secondary

Federal

Total

100 Personnel Services – Salaries

100 Personnel Services – Salaries

201,264.24

Total Personnel Services – Salaries

\$201,264.24

200 Personnel Services – Employee Benefits

210 Group Insurance – Contracted Provider

132.54

220 Social Security Contributions

15,078.39

230 PSERS Retirement Contributions

67,943.01

270 Group Insurance – Self-Insurance

17,480.52

292 Health Savings Accounts

1,644.98

Total Personnel Services – Employee Benefits

\$102,279.44

Total 2831 Supervision of Staff Services

\$303,543.68

General Fund (10)

	<u>Elementary</u>	<u>Secondary</u>	<u>Federal</u>	<u>Total</u>
2832 Recruitment and Placement Services				
100 Personnel Services – Salaries				
100 Personnel Services – Salaries				93,254.86
Total Personnel Services – Salaries				\$93,254.86
200 Personnel Services – Employee Benefits				
210 Group Insurance – Contracted Provider				175.56
220 Social Security Contributions				6,789.39
230 PSERS Retirement Contributions				31,184.60
270 Group Insurance – Self-Insurance				25,759.32
292 Health Savings Accounts				2,474.94
Total Personnel Services – Employee Benefits				\$66,383.81
300 Purchased Professional and Technical Services				
390 Other Purchased Professional and Technical Services			11,624.16	21,292.06
Total Purchased Professional and Technical Services			\$11,624.16	\$21,292.06
500 Other Purchased Services				
530 Communications				35.14
580 Travel				204.81
Total Other Purchased Services				\$239.95
600 Supplies				
610 General Supplies				1,934.81
650 Supplies & Fees – Technology Related				75,046.43
Total Supplies				\$76,981.24
800 Other Objects				
810 Dues and Fees				2,869.57
Total Other Objects				\$2,869.57
Total 2832 Recruitment and Placement Services			\$11,624.16	\$261,021.49

General Fund (10)

2833 Staff Accounting Services

Elementary

Secondary

Federal

Total

100 Personnel Services – Salaries

100 Personnel Services – Salaries

26,509.90

Total Personnel Services – Salaries

\$26,509.90

200 Personnel Services – Employee Benefits

210 Group Insurance – Contracted Provider

61.50

220 Social Security Contributions

1,889.33

230 PSERS Retirement Contributions

8,652.87

270 Group Insurance – Self-Insurance

4,579.92

292 Health Savings Accounts

412.54

Total Personnel Services – Employee Benefits

\$15,596.16

Total 2833 Staff Accounting Services

\$42,106.06

General Fund (10)

	<u>Elementary</u>	<u>Secondary</u>	<u>Federal</u>	<u>Total</u>
2834 Staff Development Services – Non-Instructional, Certified Staff Only				
200 Personnel Services – Employee Benefits				
240 Tuition Reimbursement				15,873.00
Total Personnel Services – Employee Benefits				\$15,873.00
300 Purchased Professional and Technical Services				
360 Employee Training and Development Services			7,785.00	44,263.33
Total Purchased Professional and Technical Services			\$7,785.00	\$44,263.33
500 Other Purchased Services				
580 Travel			1,340.00	6,220.08
Total Other Purchased Services			\$1,340.00	\$6,220.08
600 Supplies				
630 Food				136.84
Total Supplies				\$136.84
800 Other Objects				
810 Dues and Fees				667.76
Total Other Objects				\$667.76
Total 2834 Staff Development Services – Non-Instructional, Certified Staff Only			\$9,125.00	\$67,161.01

General Fund (10)

2835 Health Services

Elementary

Secondary

Federal

Total

100 Personnel Services – Salaries

100 Personnel Services – Salaries

26,509.67

Total Personnel Services – Salaries

\$26,509.67

200 Personnel Services – Employee Benefits

210 Group Insurance – Contracted Provider

61.44

220 Social Security Contributions

1,889.19

230 PSERS Retirement Contributions

8,652.75

270 Group Insurance – Self-Insurance

4,579.74

292 Health Savings Accounts

412.42

Total Personnel Services – Employee Benefits

\$15,595.54

Total 2835 Health Services

\$42,105.21

General Fund (10)

	<u>Elementary</u>	<u>Secondary</u>	<u>Federal</u>	<u>Total</u>
2836 Staff Development Services – Non-Instructional, Non-Certified Staff Only				
100 <u>Personnel Services – Salaries</u>				
100 Personnel Services – Salaries				18,986.95
Total Personnel Services – Salaries				\$18,986.95
200 <u>Personnel Services – Employee Benefits</u>				
220 Social Security Contributions				1,445.70
230 PSERS Retirement Contributions				6,455.57
Total Personnel Services – Employee Benefits				\$7,901.27
300 <u>Purchased Professional and Technical Services</u>				
360 Employee Training and Development Services				18,692.99
Total Purchased Professional and Technical Services				\$18,692.99
500 <u>Other Purchased Services</u>				
580 Travel				3,778.04
Total Other Purchased Services				\$3,778.04
Total 2836 Staff Development Services – Non-Instructional, Non-Certified Staff Only				\$49,359.25

General Fund (10)

2839 Other Staff Services

Elementary

Secondary

Federal

Total

300 Purchased Professional and Technical Services

330 Other Professional Services

2,000.00

Total Purchased Professional and Technical Services

\$2,000.00

600 Supplies

610 General Supplies

25.00

630 Food

18,941.82

Total Supplies

\$18,966.82

Total 2839 Other Staff Services

\$20,966.82

General Fund (10)

2900 Other Support Services

Elementary

Secondary

Federal

Total

500 Other Purchased Services

595 IU Payments By Withholding

55,598.69

Total Other Purchased Services

\$55,598.69

Total 2900 Other Support Services

\$55,598.69

LEA : 113364503 Manheim Township SD

Printed 10/31/2024 9:22:17 AM

General Fund (10)

2910 Support Services Not Listed Elsewhere In the 2000 Series

Elementary

Secondary

Federal

Total

500 Other Purchased Services

595 IU Payments By Withholding

55,598.69

Total Other Purchased Services

\$55,598.69

Total 2910 Support Services Not Listed Elsewhere In the 2000 Series

\$55,598.69

General Fund (10)

	<u>Total</u>
3000 Operation of Non-Instructional Services	
100 Personnel Services – Salaries	
100 Personnel Services – Salaries	900,981.18
Total Personnel Services – Salaries	\$900,981.18
200 Personnel Services – Employee Benefits	
210 Group Insurance – Contracted Provider	158.52
220 Social Security Contributions	67,692.48
230 PSERS Retirement Contributions	229,580.53
250 Unemployment Compensation	342.22
270 Group Insurance – Self-Insurance	27,775.02
292 Health Savings Accounts	824.96
Total Personnel Services – Employee Benefits	\$326,373.73
300 Purchased Professional and Technical Services	
330 Other Professional Services	8,213.50
350 Security / Safety Services	12,618.75
390 Other Purchased Professional and Technical Services	127,383.25
Total Purchased Professional and Technical Services	\$148,215.50
400 Purchased Property Services	
410 Cleaning Services	6,566.47
430 Repairs and Maintenance Services	17,997.84
440 Rentals	5,503.98
Total Purchased Property Services	\$30,068.29
500 Other Purchased Services	
510 Student Transportation Services	155,621.68
530 Communications	5.69
550 Printing and Binding	42.60
580 Travel	19,498.42
Total Other Purchased Services	\$175,168.39
600 Supplies	
610 General Supplies	228,418.51
630 Food	9,687.17
640 Books and Periodicals	635.00
650 Supplies & Fees – Technology Related	18,779.99
Total Supplies	\$257,520.67
700 Property	
752 Capital Equipment – Original and Additional	9,312.36
Total Property	\$9,312.36
800 Other Objects	
810 Dues and Fees	39,072.86
890 Miscellaneous Expenditures	3,677.55
Total Other Objects	\$42,750.41
Total 3000 Operation of Non-Instructional Services	\$1,890,390.53

General Fund (10)

3200 Student Activities

	<u>Elementary</u>	<u>Secondary</u>	<u>Federal</u>	<u>Total</u>
100 Personnel Services – Salaries				
100 Personnel Services – Salaries				900,981.18
Total Personnel Services – Salaries				\$900,981.18
200 Personnel Services – Employee Benefits				
210 Group Insurance – Contracted Provider				158.52
220 Social Security Contributions				67,692.48
230 PSERS Retirement Contributions				229,580.53
250 Unemployment Compensation				342.22
270 Group Insurance – Self-Insurance				27,775.02
292 Health Savings Accounts				824.96
Total Personnel Services – Employee Benefits				\$326,373.73
300 Purchased Professional and Technical Services				
330 Other Professional Services				7,813.50
350 Security / Safety Services				12,618.75
390 Other Purchased Professional and Technical Services				127,383.25
Total Purchased Professional and Technical Services				\$147,815.50
400 Purchased Property Services				
410 Cleaning Services				6,566.47
430 Repairs and Maintenance Services				17,997.84
440 Rentals				5,503.98
Total Purchased Property Services				\$30,068.29
500 Other Purchased Services				
510 Student Transportation Services				155,621.68
530 Communications				5.69
550 Printing and Binding				42.60
580 Travel				19,498.42
Total Other Purchased Services				\$175,168.39
600 Supplies				
610 General Supplies				205,984.02
630 Food				8,427.01
640 Books and Periodicals				635.00
650 Supplies & Fees – Technology Related				18,779.99
Total Supplies				\$233,826.02
700 Property				
752 Capital Equipment – Original and Additional				9,312.36
Total Property				\$9,312.36
800 Other Objects				
810 Dues and Fees				39,072.86
890 Miscellaneous Expenditures				3,677.55
Total Other Objects				\$42,750.41
Total 3200 Student Activities				\$1,866,295.88

General Fund (10)

3300 Community Services

Elementary

Secondary

Federal

Total

300 Purchased Professional and Technical Services

330 Other Professional Services

400.00

400.00

Total Purchased Professional and Technical Services

\$400.00

\$400.00

600 Supplies

610 General Supplies

22,266.46

22,434.49

630 Food

760.16

1,260.16

Total Supplies

\$23,026.62

\$23,694.65

Total 3300 Community Services

\$23,426.62

\$24,094.65

General Fund (10)

4000 Facilities Acquisition, Construction and Improvement Services	<u>Total</u>
300 <u>Purchased Professional and Technical Services</u>	
330 Other Professional Services	1,076.63
Total Purchased Professional and Technical Services	\$1,076.63
400 <u>Purchased Property Services</u>	
450 Construction Services	42,963.00
Total Purchased Property Services	\$42,963.00
Total 4000 Facilities Acquisition, Construction and Improvement Services	\$44,039.63

LEA : 113364503 Manheim Township SD

Printed 10/31/2024 9:22:36 AM

General Fund (10)

4300 Architecture and Engineering Services / Educational Specifications Development – Original and Additional	<u>Elementary</u>	<u>Secondary</u>	<u>Federal</u>	<u>Total</u>
300 <u>Purchased Professional and Technical Services</u>				
330 Other Professional Services				1,076.63
Total Purchased Professional and Technical Services				\$1,076.63
Total 4300 Architecture and Engineering Services / Educational Specifications Development – Original and Additional				\$1,076.63

LEA : 113364503 Manheim Township SD

Printed 10/31/2024 9:22:36 AM

General Fund (10)

	<u>Elementary</u>	<u>Secondary</u>	<u>Federal</u>	<u>Total</u>
4500 Building Acquisition and Construction Services – Original and Additional				
400 <u>Purchased Property Services</u>				
450 Construction Services				42,963.00
Total Purchased Property Services				\$42,963.00
Total 4500 Building Acquisition and Construction Services – Original and Additional				\$42,963.00

General Fund (10)

5000 Other Expenditures and Financing Uses

Total

800 Other Objects

830 Interest 3,970,772.40

Total Other Objects \$3,970,772.40

900 Other Uses of Funds

910 Redemption of Principal 10,202,021.59

932 Capital Reserve Fund Transfers Applicable To Fund 32 4,303,428.00

Total Other Uses of Funds \$14,505,449.59

Total 5000 Other Expenditures and Financing Uses \$18,476,221.99

General Fund (10)

	<u>Elementary</u>	<u>Secondary</u>	<u>Federal</u>	<u>Total</u>
5100 Debt Service / Other Expenditures and Financing Uses				
800 Other Objects				
830 Interest				3,970,772.40
Total Other Objects				\$3,970,772.40
900 Other Uses of Funds				
910 Redemption of Principal				10,202,021.59
Total Other Uses of Funds				\$10,202,021.59
Total 5100 Debt Service / Other Expenditures and Financing Uses				\$14,172,793.99

General Fund (10)

	<u>Elementary</u>	<u>Secondary</u>	<u>Federal</u>	<u>Total</u>
5110 Debt Service				
800 Other Objects				
830 Interest				3,856,893.29
Total Other Objects				\$3,856,893.29
900 Other Uses of Funds				
910 Redemption of Principal				9,865,798.30
Total Other Uses of Funds				\$9,865,798.30
Total 5110 Debt Service				\$13,722,691.59

General Fund (10)

	<u>Elementary</u>	<u>Secondary</u>	<u>Federal</u>	<u>Total</u>
5140 Leases and Other Right-to-Use Arrangements				
800 Other Objects				
830 Interest				113,879.11
Total Other Objects				\$113,879.11
900 Other Uses of Funds				
910 Redemption of Principal				336,223.29
Total Other Uses of Funds				\$336,223.29
Total 5140 Leases and Other Right-to-Use Arrangements				\$450,102.40

LEA : 113364503 Manheim Township SD

Printed 10/31/2024 9:22:45 AM

General Fund (10)

5200 Interfund Transfers – Out

Elementary

Secondary

Federal

Total

900 Other Uses of Funds

932 Capital Reserve Fund Transfers Applicable To Fund 32

4,303,428.00

Total Other Uses of Funds

\$4,303,428.00

Total 5200 Interfund Transfers – Out

\$4,303,428.00

LEA : 113364503 Manheim Township SD

Printed 10/31/2024 9:22:45 AM

General Fund (10)

5230 Capital Projects Fund Transfers

Elementary

Secondary

Federal

Total

900 Other Uses of Funds

932 Capital Reserve Fund Transfers Applicable To Fund 32

4,303,428.00

Total Other Uses of Funds

\$4,303,428.00

Total 5230 Capital Projects Fund Transfers

\$4,303,428.00

LEA : 113364503 Manheim Township SD

Printed 10/31/2024 9:22:24 AM

Capital Reserve Fund - § 1431 (32)

2000 Support Services

800 Other Objects

810 Dues and Fees

Total

1,261.66

Total Other Objects

\$1,261.66

Total 2000 Support Services

\$1,261.66

LEA : 113364503 Manheim Township SD

Printed 10/31/2024 9:22:24 AM

Capital Reserve Fund - § 1431 (32)

2500 Support Services – Business

Elementary

Secondary

Federal

Total

800 Other Objects

810 Dues and Fees

1,261.66

Total Other Objects

\$1,261.66

Total 2500 Support Services – Business

\$1,261.66

LEA : 113364503 Manheim Township SD

Printed 10/31/2024 9:22:24 AM

Capital Reserve Fund - § 1431 (32)

2510 Fiscal Services

Elementary

Secondary

Federal

Total

800 Other Objects

810 Dues and Fees

1,261.66

Total Other Objects

\$1,261.66

Total 2510 Fiscal Services

\$1,261.66

LEA : 113364503 Manheim Township SD

Printed 10/31/2024 9:22:24 AM

Capital Reserve Fund - § 1431 (32)

2519 Other Fiscal Services

Elementary

Secondary

Federal

Total

800 Other Objects

810 Dues and Fees

1,261.66

Total Other Objects

\$1,261.66

Total 2519 Other Fiscal Services

\$1,261.66

Capital Reserve Fund - § 1431 (32)

4000 Facilities Acquisition, Construction and Improvement Services

Total

700 Property

756 Capitalized Technology Equipment – Original

836,155.36

Total Property

\$836,155.36

Total 4000 Facilities Acquisition, Construction and Improvement Services

\$836,155.36

LEA : 113364503 Manheim Township SD

Printed 10/31/2024 9:22:39 AM

Capital Reserve Fund - § 1431 (32)

4600 Existing Building Improvement Services

Elementary

Secondary

Federal

Total

700 Property

756 Capitalized Technology Equipment – Original

836,155.36

Total Property

\$836,155.36

Total 4600 Existing Building Improvement Services

\$836,155.36

Other Capital Projects Fund (39)

2000 Support Services

800 Other Objects

810 Dues and Fees

Total

529.84

Total Other Objects

\$529.84

Total 2000 Support Services

\$529.84

LEA : 113364503 Manheim Township SD

Printed 10/31/2024 9:22:29 AM

Other Capital Projects Fund (39)

2500 Support Services – Business

Elementary

Secondary

Federal

Total

800 Other Objects

810 Dues and Fees

529.84

Total Other Objects

\$529.84

Total 2500 Support Services – Business

\$529.84

LEA : 113364503 Manheim Township SD

Printed 10/31/2024 9:22:29 AM

Other Capital Projects Fund (39)

2510 Fiscal Services

Elementary

Secondary

Federal

Total

800 Other Objects

810 Dues and Fees

529.84

Total Other Objects

\$529.84

Total 2510 Fiscal Services

\$529.84

LEA : 113364503 Manheim Township SD

Printed 10/31/2024 9:22:29 AM

Other Capital Projects Fund (39)

2519 Other Fiscal Services

Elementary

Secondary

Federal

Total

800 Other Objects

810 Dues and Fees

529.84

Total Other Objects

\$529.84

Total 2519 Other Fiscal Services

\$529.84

Other Capital Projects Fund (39)

4000 Facilities Acquisition, Construction and Improvement Services

Total

400 Purchased Property Services

450 Construction Services

1,291,206.21

Total Purchased Property Services

\$1,291,206.21

Total 4000 Facilities Acquisition, Construction and Improvement Services

\$1,291,206.21

LEA : 113364503 Manheim Township SD

Printed 10/31/2024 9:22:42 AM

Other Capital Projects Fund (39)

4200 Existing Site Improvement Services

Elementary

Secondary

Federal

Total

400 Purchased Property Services

450 Construction Services

13,645.00

Total Purchased Property Services

\$13,645.00

Total 4200 Existing Site Improvement Services

\$13,645.00

LEA : 113364503 Manheim Township SD

Printed 10/31/2024 9:22:42 AM

Other Capital Projects Fund (39)

4500 Building Acquisition and Construction Services – Original and Additional

Elementary

Secondary

Federal

Total

400 Purchased Property Services

450 Construction Services

85,225.91

Total Purchased Property Services

\$85,225.91

Total 4500 Building Acquisition and Construction Services – Original and Additional

\$85,225.91

LEA : 113364503 Manheim Township SD

Printed 10/31/2024 9:22:42 AM

Other Capital Projects Fund (39)

4600 Existing Building Improvement Services

Elementary

Secondary

Federal

Total

400 Purchased Property Services

450 Construction Services

1,192,335.30

Total Purchased Property Services

\$1,192,335.30

Total 4600 Existing Building Improvement Services

\$1,192,335.30

	<u>General Fund(10)</u>	<u>Student Sponsored Activity Fund(21)</u>	<u>Public Purpose Trust(27)</u>	<u>Other Compt Approved (28)</u>	<u>Athletic / Activity(29)</u>
1000 Instruction					
1100 Regular Programs - Elementary / Secondary	47,344,527.92				
1200 Special Programs - Elementary / Secondary	15,155,666.12				
1300 Vocational Education	1,287,187.79				
1400 Other Instructional Programs - Elementary / Secondary	313,969.81				
1500 Nonpublic School Programs	13,700.86				
Total Instruction	\$64,115,052.50				
2000 Support Services					
2100 Support Services - Students	4,602,377.99				
2200 Support Services - Instructional Staff	5,558,269.25				
2300 Support Services - Administration	6,170,428.28				
2400 Support Services - Pupil Health	1,923,370.75				
2500 Support Services - Business	791,680.12				
2600 Operation and Maintenance of Plant Services	10,155,792.26				
2700 Student Transportation Services	5,067,348.01				
2800 Support Services - Central	891,995.16				
2900 Other Support Services	55,598.69				
Total Support Services	\$35,216,860.51				
3000 Operation of Non-Instructional Services					
3200 Student Activities	1,866,295.88				
3300 Community Services	24,094.65				
Total Operation of Non-Instructional Services	\$1,890,390.53				
4000 Facilities Acquisition, Construction and Improvement Services					
4200 Existing Site Improvement Services					
4300 Architecture and Engineering Services / Educational Specifications Development - Original and Additional	1,076.63				
4500 Building Acquisition and Construction Services - Original and Additional	42,963.00				
4600 Existing Building Improvement Services					
Total Facilities Acquisition, Construction and Improvement Services	\$44,039.63				
5000 Other Expenditures and Financing Uses					
5100 Debt Service / Other Expenditures and Financing Uses	14,172,793.99				
5200 Interfund Transfers - Out	4,303,428.00				
Total Other Expenditures and Financing Uses	\$18,476,221.99				
TOTAL ACTUAL EXPENDITURES & OTHER FINANCING USES	\$119,742,565.16				

	<u>Capital Reserve (690.1850)(31)</u>	<u>Capital Reserve (1431)(32)</u>	<u>Other Capital Projects Fund(39)</u>	<u>Debt Service(40)</u>	<u>Permanent(90)</u>
1000 Instruction					
1100 Regular Programs - Elementary / Secondary					
1200 Special Programs - Elementary / Secondary					
1300 Vocational Education					
1400 Other Instructional Programs - Elementary / Secondary					
1500 Nonpublic School Programs					
Total Instruction					
2000 Support Services					
2100 Support Services - Students					
2200 Support Services - Instructional Staff					
2300 Support Services - Administration					
2400 Support Services - Pupil Health					
2500 Support Services - Business		1,261.66		529.84	
2600 Operation and Maintenance of Plant Services					
2700 Student Transportation Services					
2800 Support Services - Central					
2900 Other Support Services					
Total Support Services		\$1,261.66		\$529.84	
3000 Operation of Non-Instructional Services					
3200 Student Activities					
3300 Community Services					
Total Operation of Non-Instructional Services					
4000 Facilities Acquisition, Construction and Improvement Services					
4200 Existing Site Improvement Services				13,645.00	
4300 Architecture and Engineering Services / Educational Specifications Development - Original and Additional					
4500 Building Acquisition and Construction Services - Original and Additional				85,225.91	
4600 Existing Building Improvement Services		836,155.36		1,192,335.30	
Total Facilities Acquisition, Construction and Improvement Services		\$836,155.36		\$1,291,206.21	
5000 Other Expenditures and Financing Uses					
5100 Debt Service / Other Expenditures and Financing Uses					
5200 Interfund Transfers - Out					
Total Other Expenditures and Financing Uses					
TOTAL ACTUAL EXPENDITURES & OTHER FINANCING USES		\$837,417.02		\$1,291,736.05	

Total

1000 <u>Instruction</u>	
1100 Regular Programs - Elementary / Secondary	47,344,527.92
1200 Special Programs - Elementary / Secondary	15,155,666.12
1300 Vocational Education	1,287,187.79
1400 Other Instructional Programs - Elementary / Secondary	313,969.81
1500 Nonpublic School Programs	13,700.86
Total Instruction	\$64,115,052.50
2000 <u>Support Services</u>	
2100 Support Services - Students	4,602,377.99
2200 Support Services - Instructional Staff	5,558,269.25
2300 Support Services - Administration	6,170,428.28
2400 Support Services - Pupil Health	1,923,370.75
2500 Support Services - Business	793,471.62
2600 Operation and Maintenance of Plant Services	10,155,792.26
2700 Student Transportation Services	5,067,348.01
2800 Support Services - Central	891,995.16
2900 Other Support Services	55,598.69
Total Support Services	\$35,218,652.01
3000 <u>Operation of Non-Instructional Services</u>	
3200 Student Activities	1,866,295.88
3300 Community Services	24,094.65
Total Operation of Non-Instructional Services	\$1,890,390.53
4000 <u>Facilities Acquisition, Construction and Improvement Services</u>	
4200 Existing Site Improvement Services	13,645.00
4300 Architecture and Engineering Services / Educational Specifications Development - Original and Additional	1,076.63
4500 Building Acquisition and Construction Services - Original and Additional	128,188.91
4600 Existing Building Improvement Services	2,028,490.66
Total Facilities Acquisition, Construction and Improvement Services	\$2,171,401.20
5000 <u>Other Expenditures and Financing Uses</u>	
5100 Debt Service / Other Expenditures and Financing Uses	14,172,793.99
5200 Interfund Transfers - Out	4,303,428.00
Total Other Expenditures and Financing Uses	\$18,476,221.99
TOTAL ACTUAL EXPENDITURES & OTHER FINANCING USES	\$121,871,718.23

PSERS Salary Data (Salary Data should relate to the General Fund only)

Amount Description	Amount
Total Salary Base for salaries subject to PSERS withholding	47,391,361.76
Total Federally Funded salaries subject to PSERS withholding	570,883.23
	<hr/>

Title I Expenditure Data

Amount Description	Amount
Expenditures Funded with Current Title I Funds	586,702.00
Expenditures Funded with Carry over Title I Funds	9,223.17
	<hr/>
Total Title I Expenditure Data	\$595,925.17
	<hr/>

Title IV Revenue Data

Amount Description	Amount
Revenue from Title IV-A-1: Student Support and Academic Enrichment Grants	49,164.63
	<hr/>

1 .	<u>Current Special Education Expenditures within Function 1000</u> See list of exclusions in the note below.	10,737,217.55
2 .	<u>Current Special Education Expenditures within Function 2000</u> See list of exclusions in the note below.	4,098,608.43
2A.	<u>Current Special Education Expenditures within Sub-Function 2100</u> This data should also be included in line 2 above. See list of exclusions in the note below.	1,562,289.12
2B.	<u>Current Special Education Expenditures within Sub-Function 2200</u> This data should also be included in line 2 above. See list of exclusions in the note below.	824,075.48
2C.	<u>Current Special Education Expenditures within Sub-Function 2700</u> This data should also be included in line 2 above. See list of exclusions in the note below.	1,040,913.26
3.	<u>Current Special Education Expenditures within Sub-Function 3100</u> See list of exclusions in the note below.	
4.	<u>Current Special Education Expenditures within Sub-Function 3200</u> See list of exclusions in the note below.	

Note: The Current Special Education Expenditure amounts for each line should be calculated as follows:

- * Include the total expenditures for special education costs from all governmental funds and the food service fund 51 for the function/sub-function requested
- * Exclude data from sub-functions: 1243,1450,1500,1600,1807,2280,2450,2750,2990
- * Exclude data from objects: 322,511,512,516,561,562,564,566,592,593,594,595,596,597,700,830,899

Benefits for Staff Relative to Collective Bargaining Agreements

	OBJECT	COVERED	NOT COVERED	TOTAL
10 General Fund	No Self Insurance data to report			
	211 Medical Insurance			
	212 Dental Insurance			
	215 Eye Care Insurance	44,009.80	17,114.92	61,124.72
	216 Prescription Insurance			
	271 Self-Insurance Medical Benefits			
	272 Self-Insurance Dental Benefits			
	275 Self-Insurance Eye Care Benefits			
	276 Self-Insurance Prescription Benefits			
	FUND TOTAL		\$44,009.80	\$17,114.92
50 Enterprise Fund	No Self Insurance data to report			
	211 Medical Insurance			
	212 Dental Insurance			
	215 Eye Care Insurance		1,907.41	1,907.41
	216 Prescription Insurance			
	271 Self-Insurance Medical Benefits			
	272 Self-Insurance Dental Benefits			
	275 Self-Insurance Eye Care Benefits			
	276 Self-Insurance Prescription Benefits			
	FUND TOTAL			\$1,907.41
60 Internal Service Fund				
	211 Medical Insurance			
	212 Dental Insurance			
	215 Eye Care Insurance			
	216 Prescription Insurance			
	271 Self-Insurance Medical Benefits	4,793,740.01	1,864,232.22	6,657,972.23
	272 Self-Insurance Dental Benefits	276,679.00	107,597.39	384,276.39
	275 Self-Insurance Eye Care Benefits			
	276 Self-Insurance Prescription Benefits	1,777,309.47	691,175.90	2,468,485.37
	FUND TOTAL	\$6,847,728.48	\$2,663,005.51	\$9,510,733.99
Total of All Funds		\$6,891,738.28	\$2,682,027.84	\$9,573,766.12

LEA : 113364503 Manheim Township SD

Printed 10/31/2024 9:23:09 AM

Function	Special Education (Prior Year)	Nonspecial Education (Prior Year)	Total (Prior Year)	Special Education (Current Year)	Nonspecial Education (Current Year)	Total (Current Year)
2120 Guidance Services	396,127.54	2,079,565.70	2,475,693.24	410,037.50	2,119,999.03	2,530,036.53
2140 Psychological Services	876,960.76	219,240.19	1,096,200.95	1,112,453.80	278,113.45	1,390,567.25
2150 Speech Pathology and Audiology Services						
2160 Social Work Services	36,229.19	190,193.77	226,422.96	39,797.82	205,764.91	245,562.73
2260 Instruction and Curriculum Development Services	659,383.44	719,539.71	1,378,923.15	824,075.48	961,428.98	1,785,504.46
2350 Legal and Accounting Services	64,958.02	151,199.35	216,157.37	66,784.63	114,010.65	180,795.28
2420 Medical Services	353,423.48	78,994.54	432,418.02	365,276.69	80,469.81	445,746.50
2440 Nursing Services	221,453.35	1,162,572.01	1,384,025.36	239,269.25	1,237,083.35	1,476,352.60
2700 Student Transportation Services	1,042,336.52	4,018,813.69	5,061,150.21	1,040,913.26	4,026,434.75	5,067,348.01
Total	\$3,650,872.30	\$8,620,118.96	\$12,270,991.26	\$4,098,608.43	\$9,023,304.93	\$13,121,913.36

(PRINCIPAL AMOUNTS ONLY)

GOVERNMENTAL FUNDS/ ACTIVITIES

	Short-Term Borrowing	General Obligation Bonds/Notes	Authority Building Obligations	Leases, Other Right to Use Arrangements	Extended Term Financing Agreements	Other Long Term Debt/Liabilities	OPEB, Comp Abs, Net Pension Liab	Total
1. Debt at Beginning of Fiscal Year		123,590,000.00		4,166,663.70	1,759,322.13		139,237,324.00	268,753,309.83
2. Additional Debt Incurred During Year				321,861.00			235,803.00	557,664.00
3. Retirements and Repayments		8,905,000.00		336,223.29	960,893.07		1,254,719.00	11,456,835.36
4. Debt at End of Fiscal Year		114,685,000.00		4,152,301.41	798,429.06		138,218,408.00	257,854,138.47
5. Accreted Interest at End Of Fiscal Year								
6. Total Debt and Accreted Interest		114,685,000.00		4,152,301.41	798,429.06		138,218,408.00	257,854,138.47
7. Current Portion P&I - Due within 1 year		13,819,413.50		492,378.12	798,429.06			15,110,220.68
8. Interest Paid during current fiscal year		3,854,893.50		113,879.11	1,999.79			3,970,772.40

(PRINCIPAL AMOUNTS ONLY)

PROPRIETARY FUNDS

	Short-Term Borrowing	General Obligation Bonds/Notes	Authority Building Obligations	Leases, Other Right to Use Arrangements	Extended Term Financing Agreements	Other Long Term Debt/Liabilities	OPEB, Comp Abs, Net Pension Liab	Total
1. Debt at Beginning of Fiscal Year							2,698,820.00	2,698,820.00
2. Additional Debt Incurred During Year				51,568.00				51,568.00
3. Retirements and Repayments				7,580.00			14,516.00	22,096.00
4. Debt at End of Fiscal Year				43,988.00			2,684,304.00	2,728,292.00
5. Accreted Interest at End Of Fiscal Year								
6. Total Debt and Accreted Interest				43,988.00			2,684,304.00	2,728,292.00
7. Current Portion P&I - Due within 1 year				12,363.00				12,363.00
8. Interest Paid during current fiscal year				2,722.85				2,722.85

Total Principal and Interest Payments Made by Your School - All Funds

Function	Fund		Principal (910)	Principal (920)	Interest (830)	Total (Principal +Interest)	Misc Other Uses (990)
5110	10	General Fund	9,865,798.30		3,856,893.29	13,722,691.59	
5110	20	Special Revenue Funds					
5110	30	Capital Projects Funds					
5110	40	Debt Service Fund					
5110	90	Permanent Fund					
5120	10	General Fund					
5120	20	Special Revenue Funds					
5120	30	Capital Projects Funds					
5120	40	Debt Service Fund					
5140	10	General Fund	336,223.29		113,879.11	450,102.40	
5140	20	Special Revenue Funds					
5140	30	Capital Projects Funds					
5140	40	Debt Service Fund					
5140	90	Permanent Fund					
Total Debt Payments - Governmental Funds			\$10,202,021.59		\$3,970,772.40	\$14,172,793.99	

Function	Fund		Principal (910)	Principal (920)	Interest (830)	Total (Principal +Interest)
5110	50	Enterprise Fund				
5110	60	Internal Service Fund				
5120	50	Enterprise Fund				
5120	60	Internal Service Fund				
5140	50	Enterprise Fund	7,580.00		2,722.85	10,302.85
5140	60	Internal Service Fund				
Total Debt Payments - Proprietary Funds			\$7,580.00		\$2,722.85	\$10,302.85

Debt Details
Governmental Funds/ Activities

Debt Category	Debt Issue Date (MM/YYYY)	Principal Amounts Only			Debt at End of Fiscal Year	Current Portion Due Within One Year (Principal and Interest)	Interest Paid During Fiscal Year
		Debt at Beginning of Fiscal Year	Additions	Reductions / Repayments			
General Obligation Bonds/Notes – CIB	7/2021	16,910,000.00		5,000.00	16,905,000.00	675,125.00	670,175.00
General Obligation Bonds/Notes – CIB	6/2021	10,910,000.00		6,640,000.00	4,270,000.00	33,609.00	73,097.00
General Obligation Bonds/Notes – CIB	6/2021	53,960,000.00		5,000.00	53,955,000.00	1,537,322.00	1,532,464.00
General Obligation Bonds/Notes – CIB	2/2020	26,830,000.00		5,000.00	26,825,000.00	2,164,250.00	1,054,300.00
General Obligation Bonds/Notes – CIB	4/2019	6,160,000.00		1,175,000.00	4,985,000.00	1,331,757.50	157,007.50
General Obligation Bonds/Notes – CIB	4/2018	8,820,000.00		1,075,000.00	7,745,000.00	8,077,350.00	367,850.00
Leases and Other Right to Use Arrangements		4,166,663.70	321,861.00	336,223.29	4,152,301.41	492,378.12	113,879.11
Extended Term Financing Agreements		1,759,322.13		960,893.07	798,429.06	798,429.06	1,999.79
Other Post-Employment Benefits (OPEB)		12,511,116.00		809,719.00	11,701,397.00		
Net Pension Liability		125,263,000.00		445,000.00	124,818,000.00		
Compensated Absences		1,463,208.00	235,803.00		1,699,011.00		
Totals for Debt Entered:		\$268,753,309.83	\$557,664.00	\$11,456,835.36	\$257,854,138.47	\$15,110,220.68	\$3,970,772.40

Bond Details
Proprietary Funds

Debt Category	Debt Issue Date (MM/YYYY)	Principal Amounts Only			Debt at End of Fiscal Year	Current Portion Due Within One Year (Principal and Interest)	Interest Paid During Fiscal Year
		Debt at Beginning of Fiscal Year	Additions	Reductions / Repayments			
Leases and Other Right to Use Arrangements			51,568.00	7,580.00	43,988.00	12,363.00	2,722.85
Other Post-Employment Benefits (OPEB)		142,820.00		5,516.00	137,304.00		
Net Pension Liability		2,556,000.00		9,000.00	2,547,000.00		
Totals for Debt Entered:		\$2,698,820.00	\$51,568.00	\$22,096.00	\$2,728,292.00	\$12,363.00	\$2,722.85

General Fund (10)

Section 1: Tuition/Purchased Services as Reported within Expenditure Detail	Amount
Tuition Reported in General Fund Expenditures 1000-560	3,698,166.45
Purchased Services in General Fund Expenditures 1000-594 and 1000-597	
Section 1 Total	\$3,698,166.45

Section 2: Tuition Paid to Institution Types During Fiscal Year	Tuition Paid For Nonspecial Education	Tuition Paid For Special Education	Total
1 1306 Institutions			
2 Institutionalized Children's Programs		27,619.55	27,619.55
3 Juveniles Incarcerated in Adult Facilities			
4 Residential Treatment Facilities			
5 Other Local Education Agencies	40,950.43	99,230.41	140,180.84
6 Brick and Mortar Charter Schools	10,138.97	7,175.96	17,314.93
7 Cyber Charter Schools	654,501.77	714,431.42	1,368,933.19
8 Career and Technology Centers	1,287,187.79		1,287,187.79
9 Approved Private Schools		40,596.13	40,596.13
10 PA Chartered Schools for the Deaf and Blind			
11 Private Residential Rehabilitative Institutions			
12 Juvenile Detention Centers			
13 Special Program Jointures	52,450.00		52,450.00
14 Other Tuition Not Included Elsewhere In This Section	141,040.80	622,843.22	763,884.02
Section 2 Total	\$2,186,269.76	\$1,511,896.69	\$3,698,166.45

Food Service / Cafeteria Operations Fund (51)

3000 Operation of Non-Instructional Services

Total

100 Personnel Services – Salaries

100 Personnel Services – Salaries 1,156,665.27

Total Personnel Services – Salaries

\$1,156,665.27

200 Personnel Services – Employee Benefits

210 Group Insurance – Contracted Provider 1,907.41

220 Social Security Contributions 85,839.38

230 PSERS Retirement Contributions 309,448.50

250 Unemployment Compensation 69.63

260 Workers' Compensation 1,987.33

270 Group Insurance – Self-Insurance 299,428.82

280 Other Post-Employment Benefits (OPEB) (24,280.00)

292 Health Savings Accounts 10,880.73

Total Personnel Services – Employee Benefits

\$685,281.80

300 Purchased Professional and Technical Services

330 Other Professional Services 1,583.00

Total Purchased Professional and Technical Services

\$1,583.00

400 Purchased Property Services

430 Repairs and Maintenance Services 59,848.57

440 Rentals 12,703.30

Total Purchased Property Services

\$72,551.87

500 Other Purchased Services

530 Communications 2,665.50

540 Advertising 637.44

550 Printing and Binding 1,973.00

580 Travel 2,882.52

Total Other Purchased Services

\$8,158.46

600 Supplies

610 General Supplies 101,067.72

620 Energy 3,289.91

630 Food 1,823,282.48

650 Supplies & Fees – Technology Related 14,914.08

Total Supplies

\$1,942,554.19

700 Property

740 Depreciation 75,647.24

Total Property

\$75,647.24

800 Other Objects

810 Dues and Fees 2,831.13

830 Interest 2,722.85

Total Other Objects

\$5,553.98

Total 3000 Operation of Non-Instructional Services

\$3,947,995.81

Food Service / Cafeteria Operations Fund (51)

3100 Food Services

Elementary Secondary Federal Total

100	<u>Personnel Services – Salaries</u>			
	100 Personnel Services – Salaries			1,156,665.27
	Total Personnel Services – Salaries			\$1,156,665.27
200	<u>Personnel Services – Employee Benefits</u>			
	210 Group Insurance – Contracted Provider			1,907.41
	220 Social Security Contributions			85,839.38
	230 PSERS Retirement Contributions			309,448.50
	250 Unemployment Compensation			69.63
	260 Workers' Compensation			1,987.33
	270 Group Insurance – Self-Insurance			299,428.82
	280 Other Post-Employment Benefits (OPEB)			(24,280.00)
	292 Health Savings Accounts			10,880.73
	Total Personnel Services – Employee Benefits			\$685,281.80
300	<u>Purchased Professional and Technical Services</u>			
	330 Other Professional Services			1,583.00
	Total Purchased Professional and Technical Services			\$1,583.00
400	<u>Purchased Property Services</u>			
	430 Repairs and Maintenance Services			59,848.57
	440 Rentals			12,703.30
	Total Purchased Property Services			\$72,551.87
500	<u>Other Purchased Services</u>			
	530 Communications			2,665.50
	540 Advertising			637.44
	550 Printing and Binding			1,973.00
	580 Travel			2,882.52
	Total Other Purchased Services			\$8,158.46
600	<u>Supplies</u>			
	610 General Supplies			101,067.72
	620 Energy			3,289.91
	630 Food			1,823,282.48
	650 Supplies & Fees – Technology Related			14,914.08
	Total Supplies			\$1,942,554.19
700	<u>Property</u>			
	740 Depreciation			75,647.24
	Total Property			\$75,647.24
800	<u>Other Objects</u>			
	810 Dues and Fees			2,831.13
	830 Interest			2,722.85
	Total Other Objects			\$5,553.98
	Total 3100 Food Services			\$3,947,995.81

Internal Service Fund (60)

2000 Support Services

Total

200 Personnel Services – Employee Benefits

270 Group Insurance – Self-Insurance

9,574,576.62

Total Personnel Services – Employee Benefits

\$9,574,576.62

800 Other Objects

810 Dues and Fees

4,656.47

Total Other Objects

\$4,656.47

Total 2000 Support Services

\$9,579,233.09

LEA : 113364503 Manheim Township SD

Printed 10/31/2024 9:23:18 AM

Internal Service Fund (60)

2800 Support Services – Central

Elementary

Secondary

Federal

Total

200 Personnel Services – Employee Benefits

270 Group Insurance – Self-Insurance

9,574,576.62

Total Personnel Services – Employee Benefits

\$9,574,576.62

800 Other Objects

810 Dues and Fees

4,656.47

Total Other Objects

\$4,656.47

Total 2800 Support Services – Central

\$9,579,233.09

Internal Service Fund (60)

2890 Other Support Services Central

Elementary

Secondary

Federal

Total

200 Personnel Services – Employee Benefits

270 Group Insurance – Self-Insurance

9,574,576.62

Total Personnel Services – Employee Benefits

\$9,574,576.62

800 Other Objects

810 Dues and Fees

4,656.47

Total Other Objects

\$4,656.47

Total 2890 Other Support Services Central

\$9,579,233.09

	<u>Food Service(51)</u>	<u>Child Care Operations(52)</u>	<u>Other Enterprise(58)</u>	<u>Internal Service(60)</u>	<u>Total</u>
2000 Support Services					
2800 Support Services - Central				9,579,233.09	9,579,233.09
Total Support Services				\$9,579,233.09	\$9,579,233.09
3000 Operation of Non-Instructional Services					
3100 Food Services	3,947,995.81				3,947,995.81
Total Operation of Non-Instructional Services	\$3,947,995.81				\$3,947,995.81
TOTAL ACTUAL EXPENDITURES & OTHER FINANCING USES	\$3,947,995.81			\$9,579,233.09	\$13,527,228.90

LEA : 113364503 Manheim Township SD

Printed 10/31/2024 9:23:33 AM

Fund	School	School Number	Local Personnel	Local Nonpersonnel	State Personnel	State Nonpersonnel	Federal Personnel	Federal Nonpersonnel	Total	Explanation
10	Brecht Sch	2619	2,780,245.17	491,303.01	779,152.05	137,685.62	6,358.65	24,340.29	4,219,084.79	
	Bucher Sch	6733	4,420,316.82	810,143.33	1,238,775.26	227,039.27	8,101.01	41,742.45	6,746,118.14	
	Landis Run Intermediate School	8246	8,868,833.88	1,829,410.93	2,485,453.51	512,684.75	21,374.66	91,570.93	13,809,328.66	
	Manheim Twp HS	2623	18,370,638.99	4,468,253.73	5,148,294.55	1,252,209.37	507,897.33	238,580.11	29,985,874.08	
	Manheim Twp MS	5114	9,525,397.90	1,904,498.54	2,669,452.82	533,727.72	254,210.83	113,352.72	15,000,640.53	
	Neff Sch	2621	3,157,751.64	596,141.08	884,946.66	167,066.05	2,711.38	27,075.36	4,835,692.17	
	Nitrauer Sch	4708	4,214,782.20	887,689.77	1,181,175.03	248,771.34	4,685.80	46,791.66	6,583,895.80	
	Reidenbaugh El Sch	7383	4,811,081.03	943,536.64	1,348,285.29	264,422.19	4,962.77	49,557.44	7,421,845.36	
	Schaeffer Sch	2620	3,546,255.09	649,285.81	993,823.12	181,959.61	3,200.93	31,963.93	5,406,488.49	
Total			59,695,302.72	12,580,262.84	16,729,358.29	3,525,565.92	813,503.36	664,974.89	94,008,968.02	