



PVAAS

(PA Value-Added Assessment System)

Measuring Growth over Time

<https://pvaas.sas.com>

PVAAS vs. PSSA



PVAAS

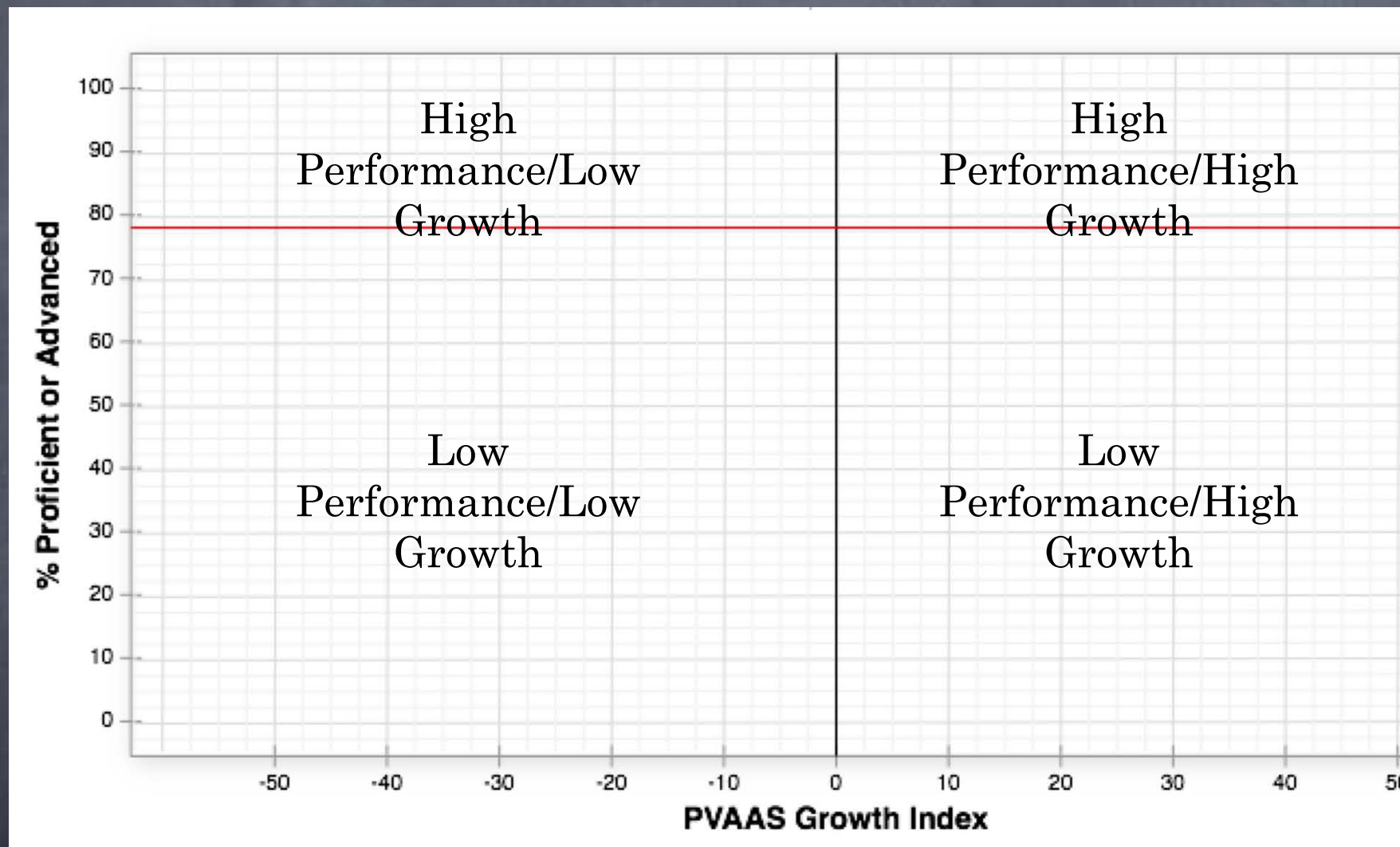
- Measures a student's progress across time; i.e., across years
- Not related to a student's demographics
- Compares student performance to his/her own prior performance

PSSA

- Measures a student's performance at one single point in time
- Highly correlated with a student's demographics
- Compares student performance to a standard

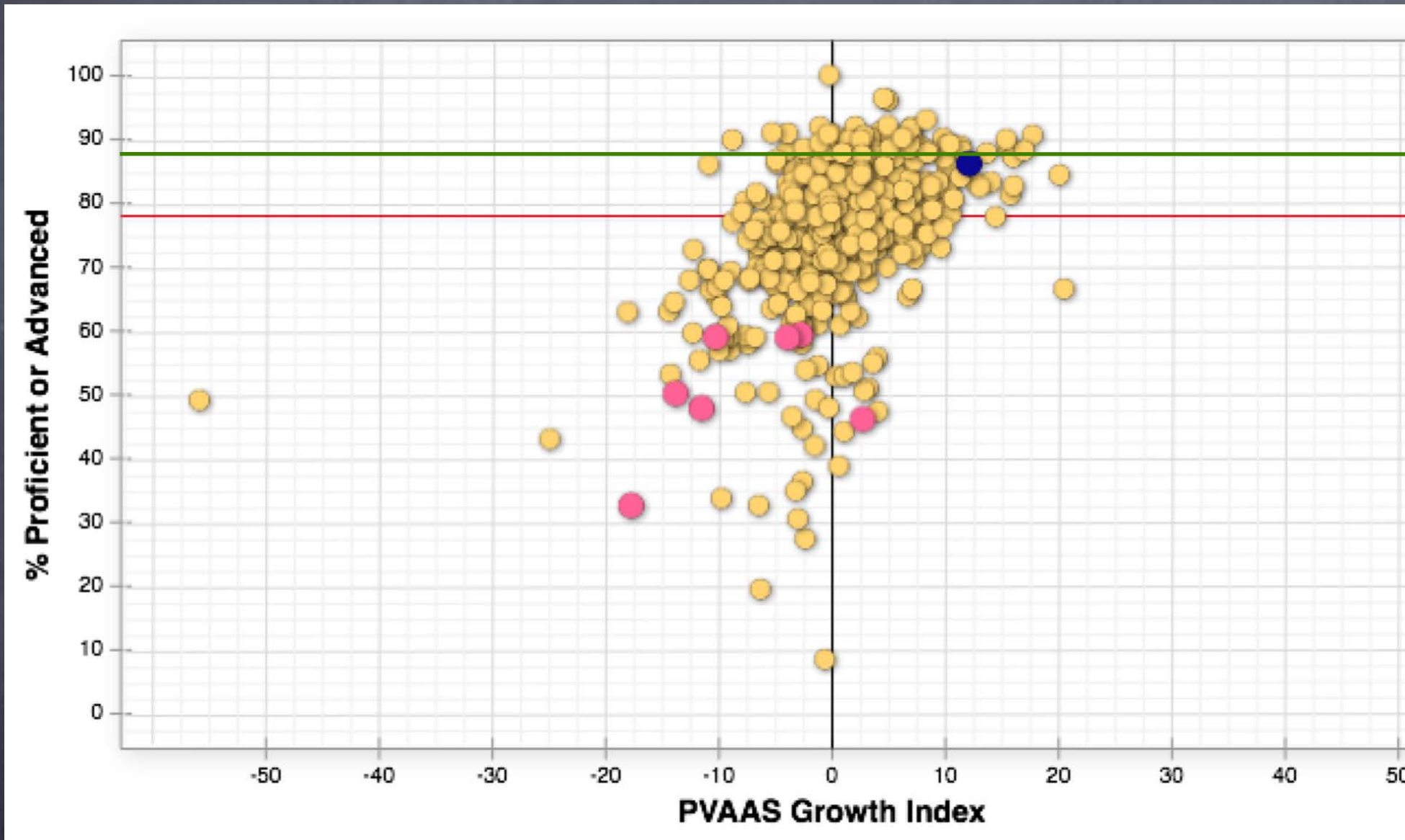
<https://pvaas.sas.com>

Scatterplots: A view of Growth AND Achievement



<https://pvaas.sas.com>

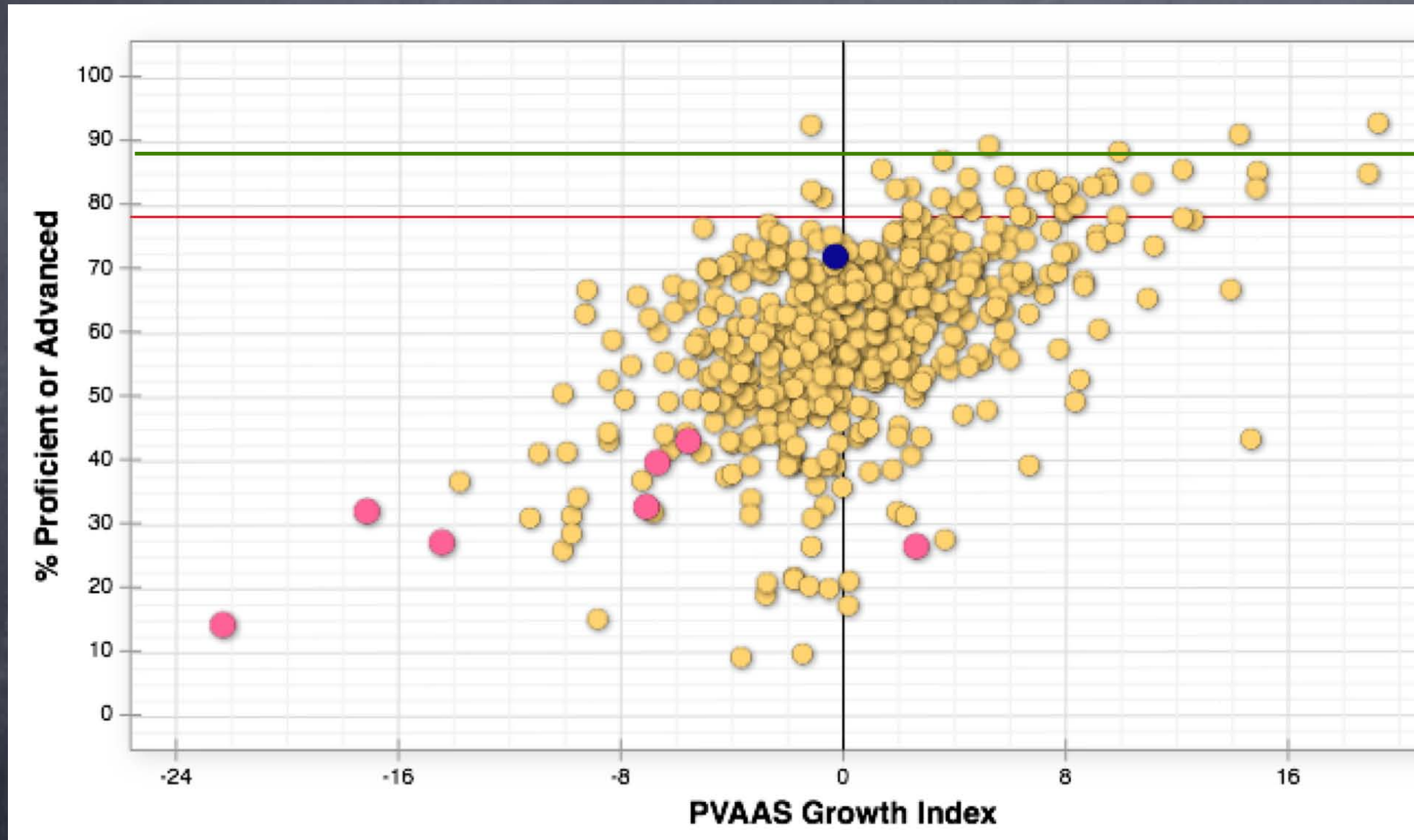
MTSD/state Comparison Math 4-8



Note: The blue dot represents MTSD. The pink dots represent charter schools our students attend. The yellow dots represent the other public schools.

<https://pvaas.sas.com>

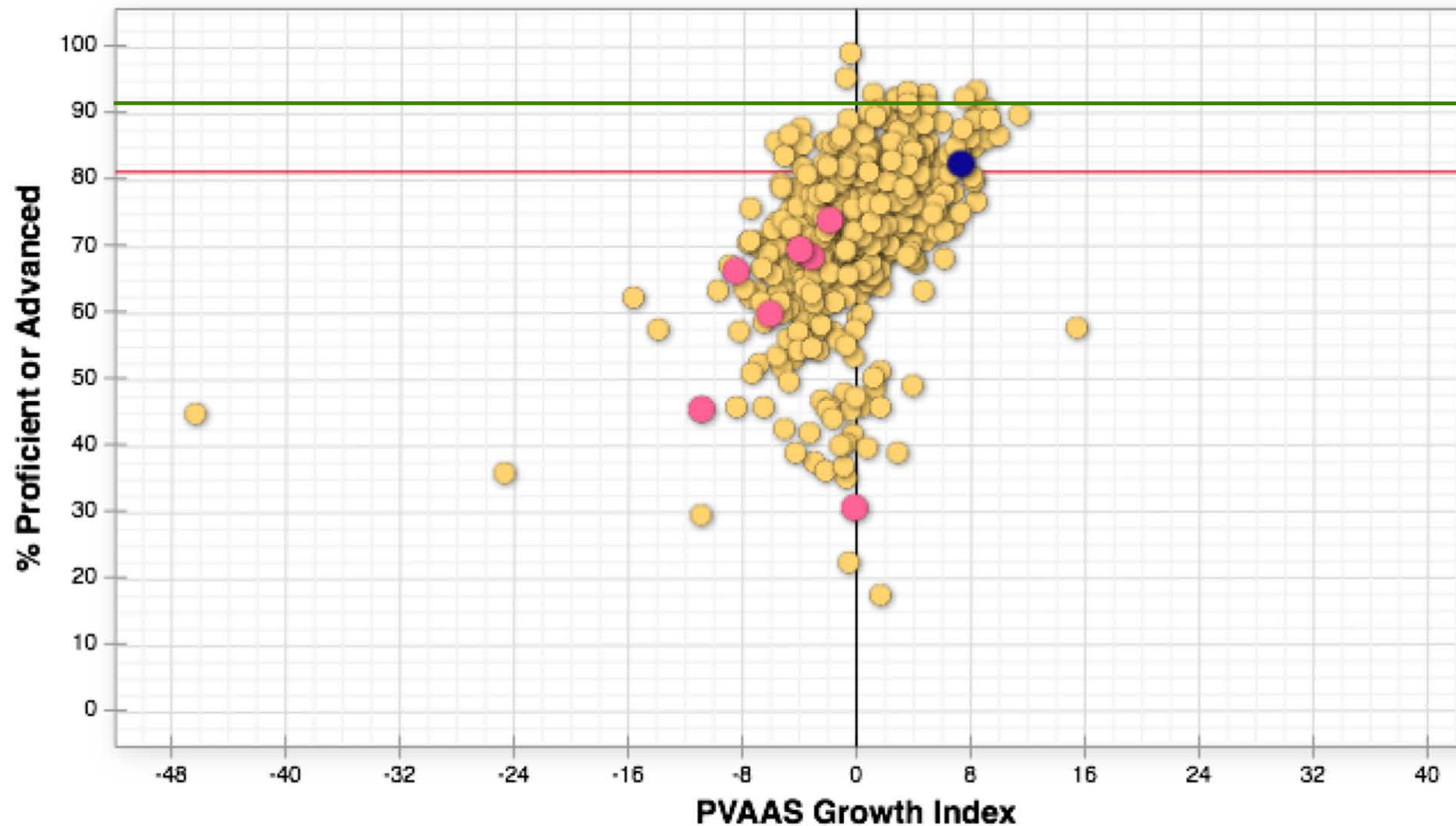
MTSD/state Comparison Math 11



Note: The blue dot represents MTSD. The pink dots represent charter schools our students attend. The yellow dots represent the other public schools.

<https://pvaas.sas.com>

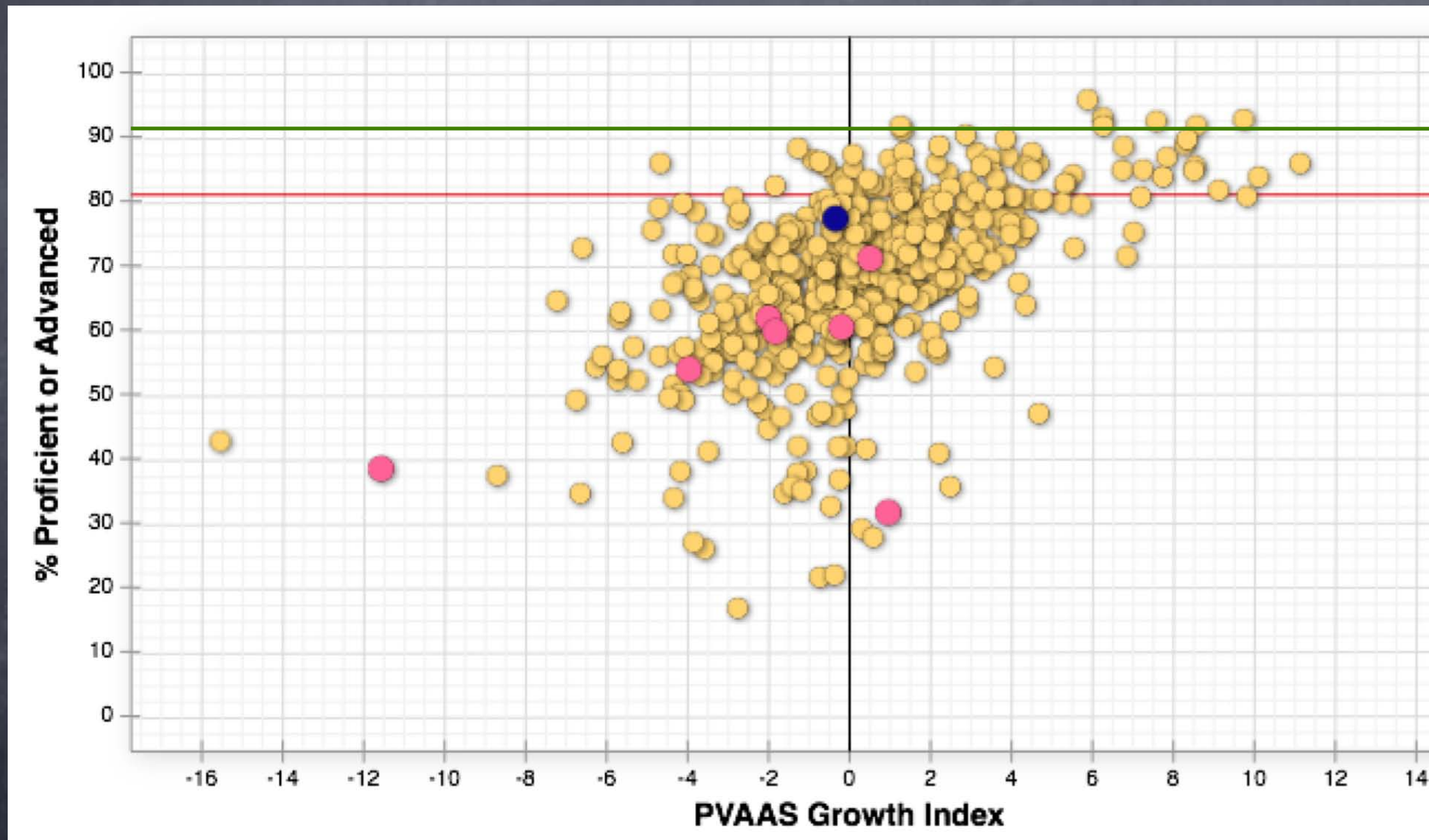
MTSD/state Comparison Reading 4-8



Note: The blue dot represents MTSD. The pink dots represent charter schools our students attend. The yellow dots represent the other public schools.

<https://pvaas.sas.com>

MTSD/state Comparison Reading 11



Note: The blue dot represents MTSD. The pink dots represent charter schools our students attend. The yellow dots represent the other public schools.

<https://pvaas.sas.com>

MT Info. For Comparison Purposes



- 23% Economically Disadvantaged
- 5% Limited English Proficiency
- 29% Minority
- 11% Special Ed.

<https://pvaas.sas.com>