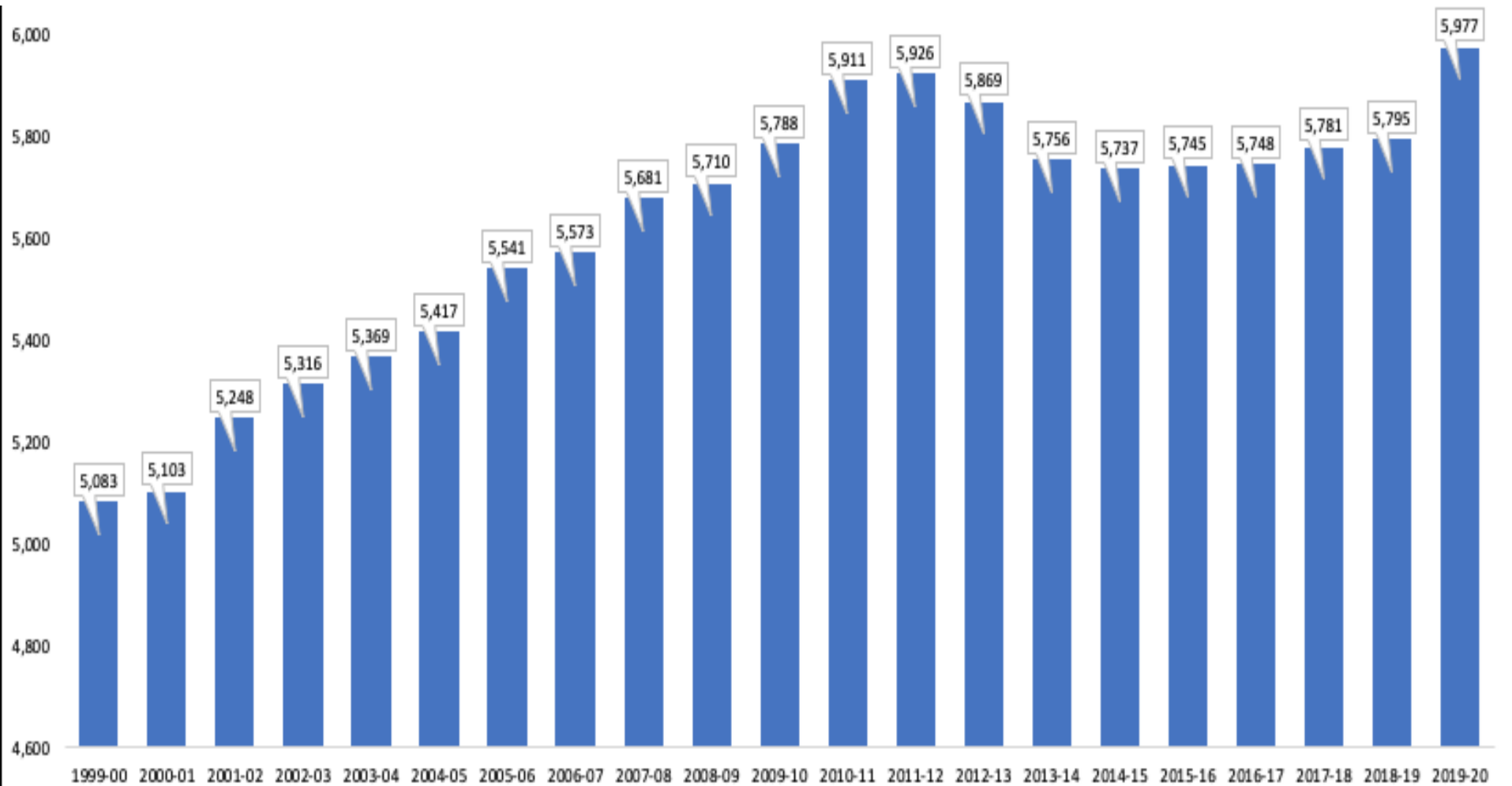




# Planning for Increasing Student Enrollment

School Board Meeting  
January 16, 2020

# Longitudinal District Data 1999/2000 - 2019/2020



# Investigating Options for Enrollment Growth

- Purchasing land and building a new school
- Renovating and/or adding on to an elementary school(s)
- Building on to LRIS -- adding 4th grade  
(adding ~460 students to ~975 students, totaling 1,435 students)
- Renovating Neff II building & designing new school for early learners (kindergarten)
- Redistricting
- **Reconfiguring/relocating programs and/or grade levels**
- Combining several different options – phasing-in options
- Doing nothing



# Planning for Increasing Enrollment

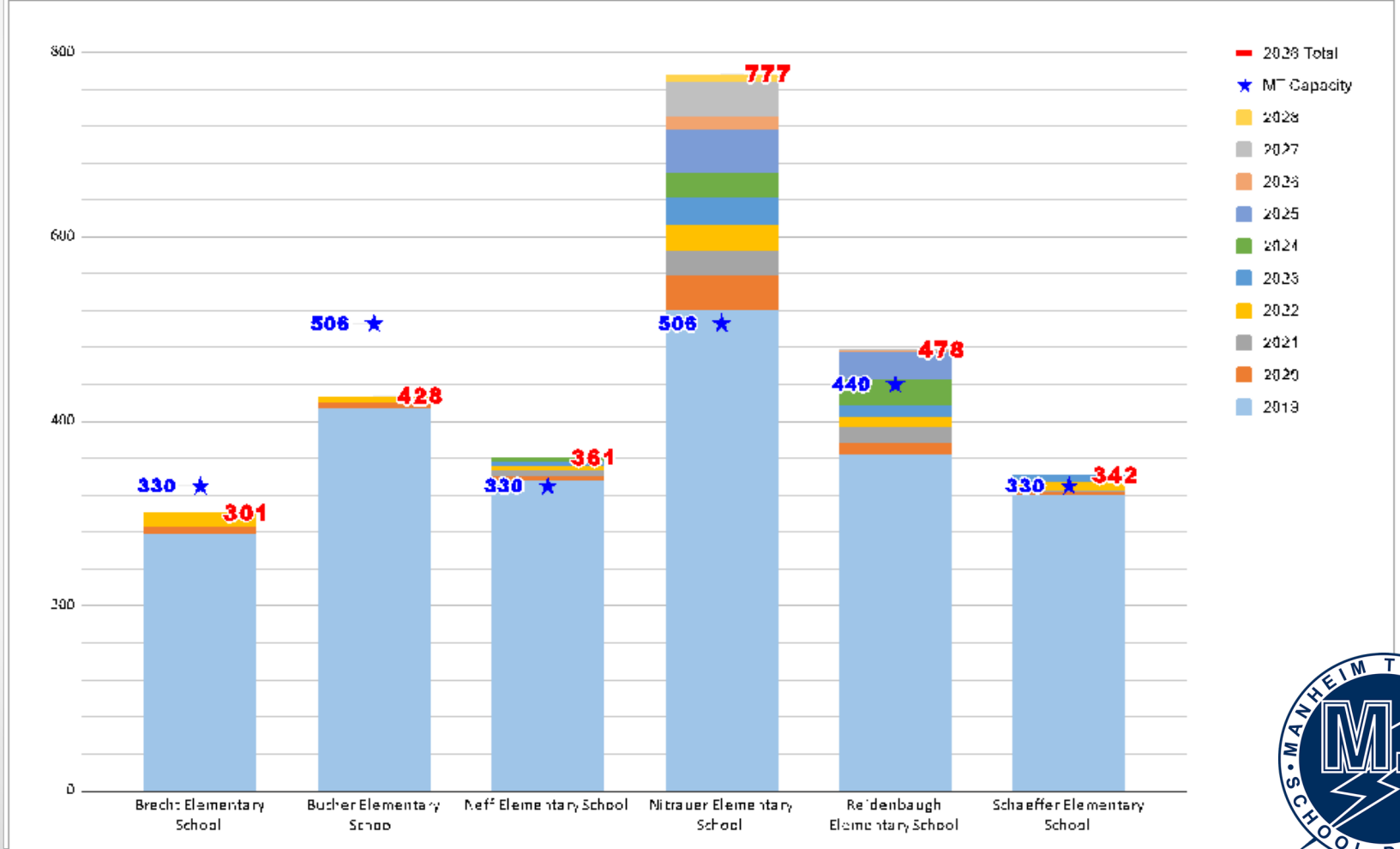
## Key considerations

- School capacity analysis
- Two-prong review
  - Prong 1: *Does the “plan” show fiscal responsibility to the community/taxpayers?*
  - Prong 2: *Does the “plan” provide educational benefit to students?*



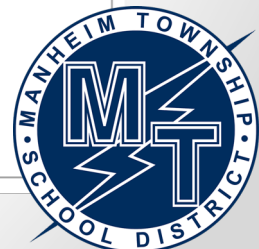
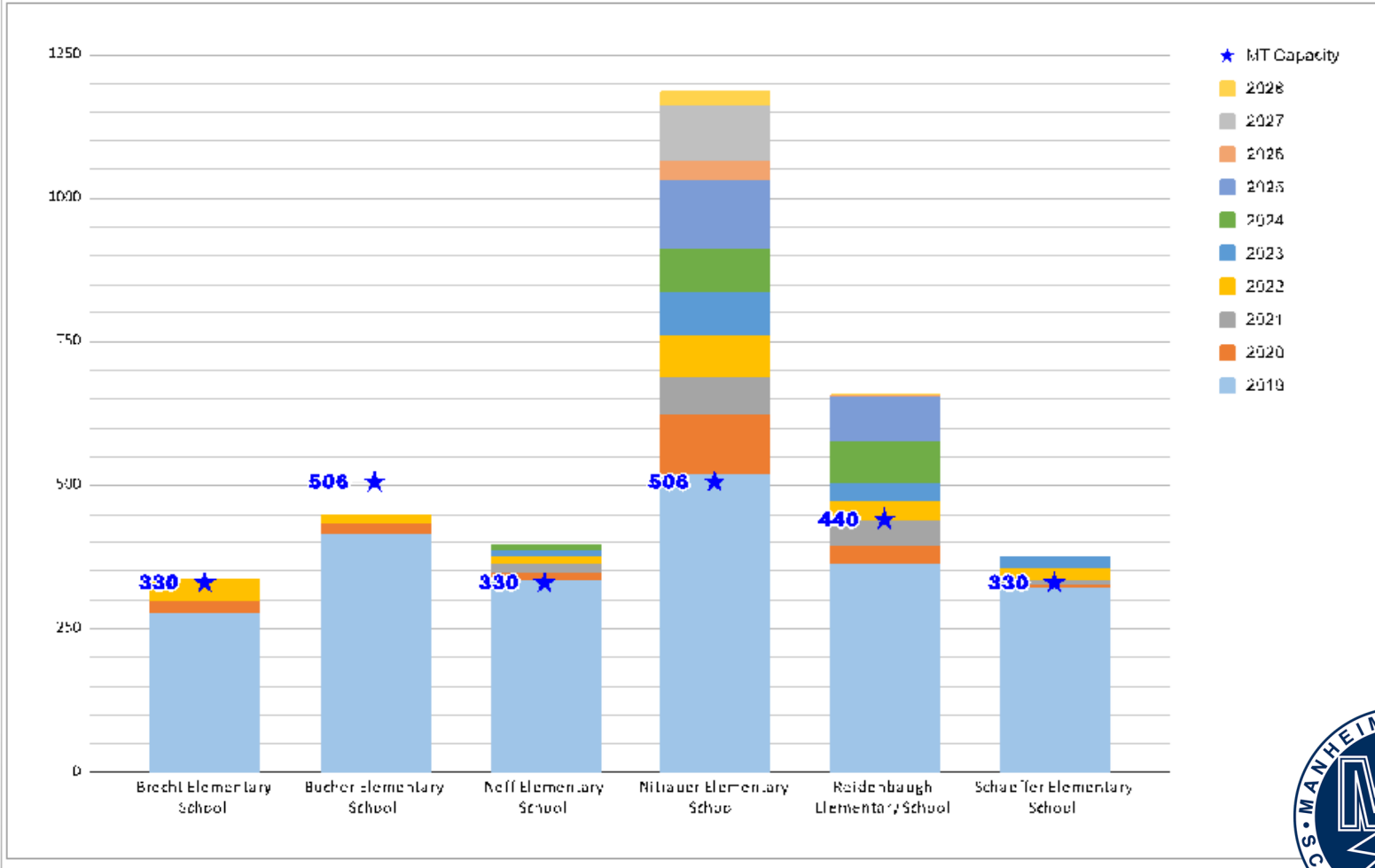
# 5/13<sup>th</sup>'s of Total Projected Students

| School Name                   | 2019 | 2020 | 2021 | 2022 | 2023 | 2024 | 2025 | 2026 | 2027 | 2028 | Projected Change | 2028 Total | MT Capacity | Year Exceeded |
|-------------------------------|------|------|------|------|------|------|------|------|------|------|------------------|------------|-------------|---------------|
| Brecht Elementary School      | 278  | 8    | 0    | 15   | 0    | 0    | 0    | 0    | 0    | 0    | 23               | 301        | 330         | N/A           |
| Bucher Elementary School      | 414  | 7    | 0    | 7    | 0    | 0    | 0    | 0    | 0    | 0    | 14               | 428        | 506         | N/A           |
| Neff Elementary School        | 336  | 5    | 6    | 5    | 5    | 4    | 0    | 0    | 0    | 0    | 25               | 361        | 330         | 2019          |
| Nitrauer Elementary School    | 520  | 39   | 26   | 28   | 29   | 29   | 46   | 13   | 37   | 10   | 257              | 777        | 506         | 2019          |
| Reidenbaugh Elementary School | 365  | 12   | 17   | 12   | 12   | 29   | 29   | 1    | 1    | 0    | 113              | 478        | 440         | 2024          |
| Schaeffer Elementary School   | 320  | 3    | 3    | 8    | 8    | 0    | 0    | 0    | 0    | 0    | 22               | 342        | 330         | 2022          |



# Total Raw Data Projections for Students

| School Name                   | 2019 | 2020 | 2021 | 2022 | 2023 | 2024 | 2025 | 2026 | 2027 | 2028 | Projected Change | 2028 Total | MT Capacity | Year Exceeded |
|-------------------------------|------|------|------|------|------|------|------|------|------|------|------------------|------------|-------------|---------------|
| Brecht Elementary School      | 278  | 22   | 0    | 38   | 0    | 0    | 0    | 0    | 0    | 0    | 60               | 338        | 330         | 2022          |
| Bucher Elementary School      | 414  | 19   | 0    | 17   | 0    | 0    | 0    | 0    | 0    | 0    | 36               | 450        | 506         | N/A           |
| Neff Elementary School        | 336  | 12   | 15   | 12   | 12   | 10   | 0    | 0    | 0    | 0    | 61               | 397        | 330         | 2019          |
| Nitrauer Elementary School    | 520  | 102  | 68   | 72   | 75   | 75   | 120  | 33   | 97   | 27   | 669              | 1189       | 506         | 2019          |
| Reidenbaugh Elementary School | 365  | 31   | 43   | 32   | 32   | 75   | 75   | 2    | 2    | 1    | 293              | 658        | 440         | 2022          |
| Schaeffer Elementary School   | 320  | 8    | 8    | 20   | 20   | 0    | 0    | 0    | 0    | 0    | 56               | 376        | 330         | 2021          |

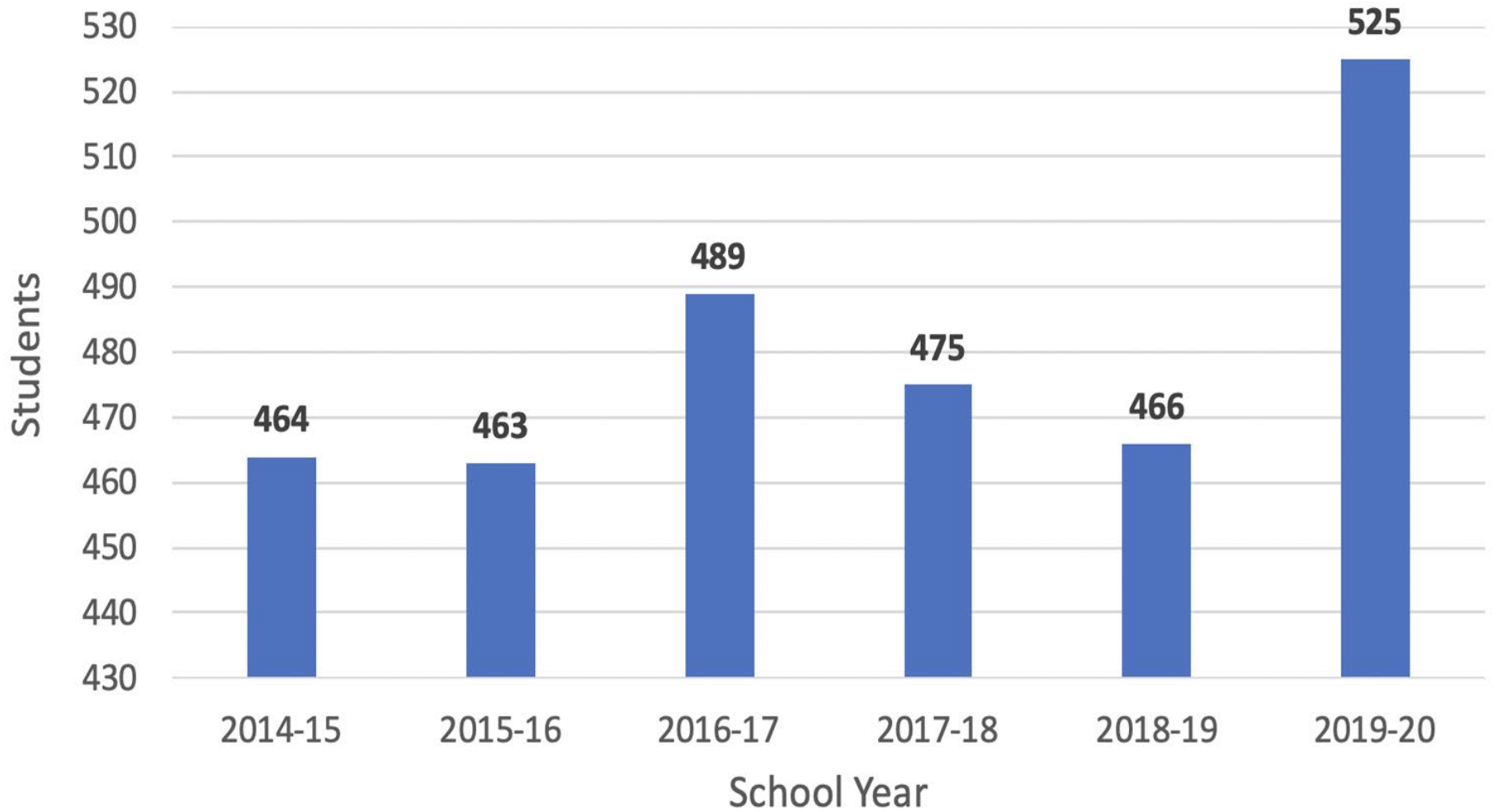


Our focus at this time for addressing  
increasing student enrollment ...*NITRAUER*



Chart Area

# Nitrauer Enrollment





# Addressing Student Enrollment Timeline

- **(Summer 2016):** Focus on MT community growth
- **(2016/17):** Added (1) new Kindergarten class at Nitrauer
- **(2017/18):** Added (1) new Gr. 3 class at Nitrauer

## **2018-2019**

- Movement of one program out of Nitrauer to allow for more space; new classes added for Gr. 1 & Gr. 2
- Contract with Remington Vernick Engineers for Demographic Study
- Open Letter to Community re: addressing student enrollment (in response to parent and community inquiries)
- Public presentation of Demographic Study report
- Public presentation re: options for consideration & recommendations

## 2019-2020

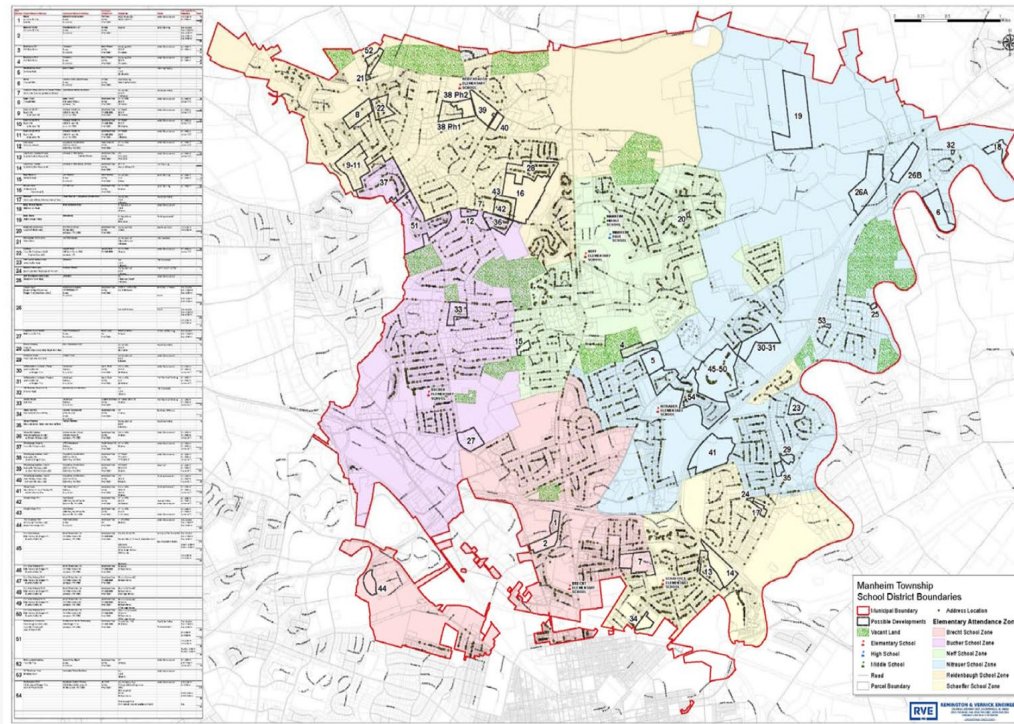
- New Gr. 4 class added at Nitrauer
- Three (3) public presentations at School Board Meetings
  - Enrollment & options for addressing growth
  - Viability of redistricting
  - Site capacity analysis
- Continued review of enrollment; site capacity analysis
  - Targeted focus on growth at Nitrauer
- Decision for movement of **Spanish Immersion Program** to an elementary school with space for (4) new classes

# Transition of Spanish Immersion to Reidenbaugh Elementary

- **(11/2019-12/2019)**: In-depth facility analysis of Reidenbaugh; internal meetings to review staffing, student needs, educational programming, school layout and long-term growth capacity
- **(12/2019)**: Timeline development for effective transitioning of program
- **(12/2019)**: Communication with staff & families at Nitrauer & Reidenbaugh
- **(1/2020)**: Parent Informational Meetings; begin teacher planning meetings for Transition Plan
- **(2/2020-9/2020)**: Continued development & implementation of Transition Plan; ongoing communication with families

# Next Steps

- Close monitoring of student enrollment
- Continued research of additional options to address future growth



# Questions

