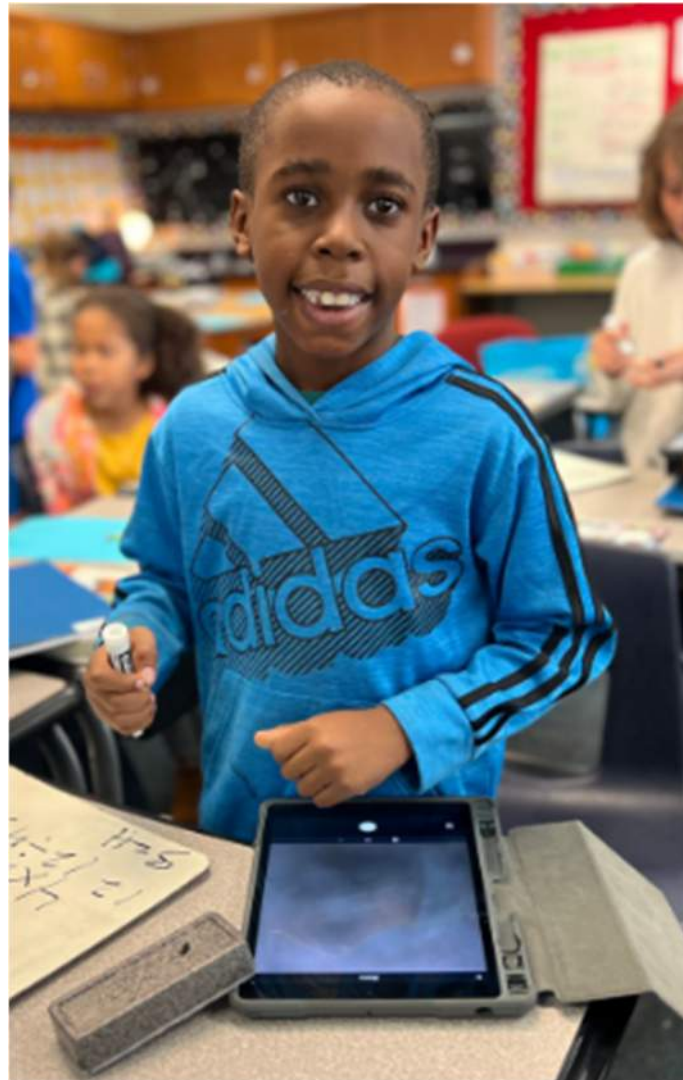


# MANHEIM TOWNSHIP SCHOOL DISTRICT

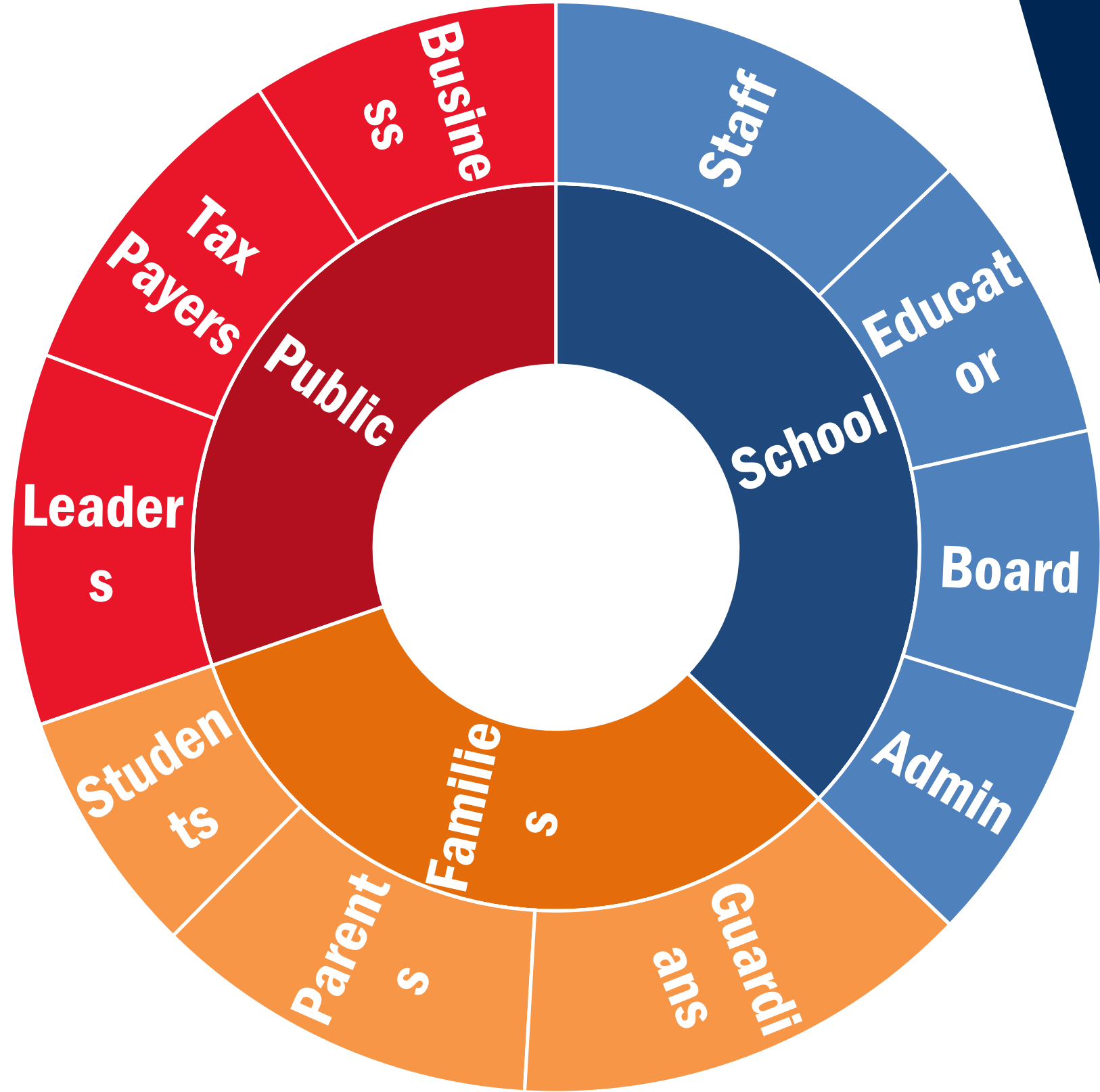


## PHASE 1 ARCHITECTURAL SERVICES **NITRAUER ELEMENTARY SCHOOL**

January 8, 2026

# Outline

- ❑ ENGAGEMENT
- ❑ PRIORITIES
- ❑ OPTIONS



# Engagement

A holistic approach to involve representatives of your community.

# Engagement

- ❑ LEADERSHIP
- ❑ PTO
- ❑ EDUCATORS & STAFF
- ❑ STUDENTS
- ❑ SCHOOL BOARD
- ❑ COMMUNITY

## OVERVIEW

- ✓ ***217 Individuals participated in the focus groups and surveys***
- ✓ RLPS conducted 4 focus groups and 2 surveys during November and December 2025
- ✓ Groups included Leadership, PTO, Educators & Staff, Students, School Board and the MTSD Community

## OVERALL TAKEAWAYS

- ✓ *Gymnasium is the best functioning space in the school*
- ✓ *Parking and car & bus pick up/drop off need updating to serve users better*
- ✓ *Lighting and building envelope improvements are needed to improve functionality*

- ✓ *Most value the community feel*
- ✓ *Would like to see more collaborative and open learning spaces added to support learning*
- ✓ *Improving air quality was another important update to make*

- ✓ ***Believed that most school spaces and support areas are not functioning appropriately and need improvement***
- ✓ ***Would like to see flexible spaces added to support learning***
- ✓ ***Would like an auditorium that can hold the entire school***
- ✓ ***Providing clean air and water is important***

- ✓ ***Most appropriately functioning support space: security entrance/lobby***  
***Least appropriately functioning support space: auditorium***
- ✓ ***Would like to add elements to support educating students (magnetic whiteboards, projectors)***
- ✓ ***Resolving the HVAC and plumbing issues are important***

- ✓ ***Lighting was ranked as the element to address or be implemented by former Nitrauer students***
- ✓ ***All students valued the people/teachers most at their elementary schools***
- ✓ ***Comfortable chairs and making schools larger were items mentioned by students that would support learning***

- ✓ ***Dated and outdated were the top responses in describing Nitrauer***
- ✓ ***Would like to see collaborative spaces added to support learning***
- ✓ ***Hope to gain a clear direction or path forward at the completion of the Study***

- ✓ ***Welcoming was the top responses in describing Nitrauer***
- ✓ ***Most value teachers and staff, followed by the community feel at the School***
- ✓ ***Solving space issues, updating the building / infrastructure and addressing traffic were items mentioned to be improved***

# Priorities

- Concerns
- Priorities
- Goals

# MoSCoW METHOD



## Facility Assessment Priorities

### PRIORITIES TO INFORM OPTIONS

**Must-Have**

**M**

*Non-negotiables*

**Should-Have**

**S**

*Added Value*

**Could-Have**

**C**

*Nice, but not  
necessary*

**Won't-Have**

**W**

*Non-Starter*

# MoSCoW METHOD

## Priorities

### Must-Have

*Non-negotiables*

- Equity of programs across elementary schools
- **Keep “neighborhood” elementary schools**
- Safe and Secure Building
- **Address aging infrastructure**
- Healthy Building Design
- Fiscally Responsible Approach
- Seamless Technology
- **Educational approach for the future (MT Future Ready)**
- Building capacity for enrollment growth / Redistricting
- Sufficient classrooms for Spanish Immersion Program
- Separation of public and education spaces
- **Collaboration and flexible spaces**

### Should-Have

*Added Value*

- Sustainability approach that includes ROI
- **Revised site traffic patterns to address current conflicts**
- Appropriate scale of building for elementary school
- Future addition for Pre-K
- District wide approach for enrollment growth
- Student Centered Education/Teacher Flexible Approach
- **Minimal student disruption during construction**
- **Community Responsive Building**

### Could-Have

*Nice, but not necessary*

- Solar
- Geothermal System
- Sustainable / Green Design
- **Keep existing Auditorium and Gymnasium**
- Large flexible gathering space (200)

### Won't-Have

*Non-Starter*

- “That’s the way we’ve always done it”

# GOALS

- **Consider 2 stories**
- Outside entrance for Envision program
- Closer / better access to baseball fields for students from playground
- Provide outdoor classroom / education area
- Locate SGI's together with folding partition that flexes into classroom
- Locate mechanical room on first floor
- Locate teacher planning rooms in pods
- Guidance suite adjacent to office with access from the corridor
- Health suite adjacent to office
- Group bathrooms adjacent to cafeteria
- **Locate STEM adjacent to Learning Commons**
- Sinks shall be in all classrooms
- Walking path around site
- Options for addressing capacity issues at Reidenbaugh Elementary (I.E. Move Spanish emersion and IU Classes)
- Consider if Neff II Building (Currently not used) could be beneficial to the project (Phasing?)
- Provide separate playgrounds (Kindergarten and 1-4)
- **Gym and Cafeteria adjacencies to playground and fields**
- Wayfinding cues in building design
- Flow (Interaction/collaboration)of students in wings/pods
- **(25) students / class (1-4 ), 22 students / class (K)**
- Retain (2) ball fields

# Options

# OPTIONS

## Status Quo

- Existing building footprint: New systems
- Existing building footprint: New Systems and selected renovation areas

## Additions and Renovations

- Renovations & Alternations in Existing building
- New Addition
- Demolition of portion(s) of Existing building

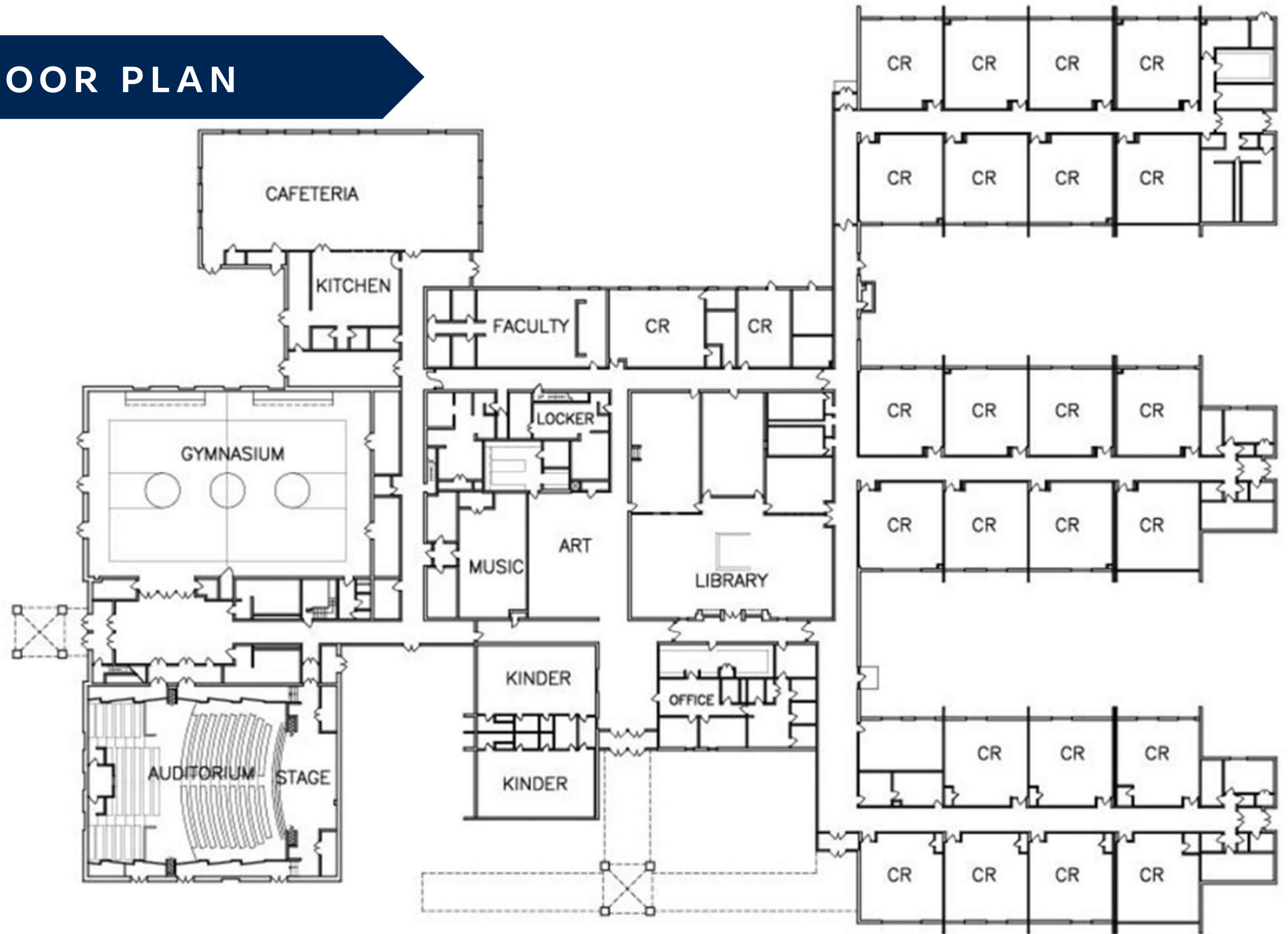
## New Building

- Outside Existing building footprint
- Reconfigure site layout

# SITE PLAN



# BUILDING FLOOR PLAN



# EXISTING SITE PLAN



OREGON PIKE

DELIVERIES

PARKING

CAR DROP-OFF

BUS LOOP / VISITOR

CROOKED DRIVE

ASHBOURNE AVENUE

# RENOVATION OPTION A



OREGON PIKE

PARKING

BUS DROP OFF

AUDITORIUM

OUTDOOR CLASSROOM

STEAM

LEARNING COMMONS

ART

MUSIC

STORAGE

GYM

STORAGE

MAIN ENTRY

NURSE

COUNSELING

PRE K

K

K

TR

TR

LGI

SGI

SGI

ENVISIONS

TR

TR

TR

TR

TR

TR

TR

TR

TR

TR

TR

TR

TR

TR

TR

TR

TR

TR

TR

TR

TR

TR

TR

TR

TR

TR

TR

TR

TR

TR

TR

TR

TR

TR

TR

TR

TR

TR

TR

TR

TR

TR

TR

TR

TR

TR

TR

TR

TR

TR

TR

TR

TR

TR

TR

TR

TR

TR

TR

TR

TR

TR

TR

TR

TR

TR

TR

TR

TR

TR

TR

TR

TR

TR

TR

TR

TR

TR

TR

TR

TR

TR

TR

TR

TR

TR

TR

TR

TR

TR

TR

TR

TR

TR

TR

TR

TR

TR

TR

TR

TR

TR

TR

TR

TR

TR

TR

TR

TR

TR

TR

TR

TR

TR

TR

TR

TR

TR

TR

TR

TR

TR

TR

TR

TR

TR

TR

TR

TR

TR

TR

TR

TR

TR

TR

TR

TR

TR

TR

TR

TR

TR

TR

TR

TR

TR

TR

TR

TR

TR

TR

TR

TR

TR

TR

TR

TR

TR

TR

TR

TR

TR

TR

TR

TR

TR

TR

TR

TR

TR

TR

TR

TR

TR

TR

TR

TR

TR

TR

TR

TR

TR

TR

TR

TR

TR

TR

TR

TR

TR

TR

TR

TR

TR

TR

TR

TR

TR

TR

TR

TR

TR

TR

TR

TR

TR

TR

TR

TR

TR

TR

TR

TR

TR

TR

TR

TR

TR

TR

TR

TR

TR

TR

TR

TR

TR

TR

TR

TR

TR

TR

TR

TR

TR

TR

TR

TR

TR

TR

TR

TR

TR

TR

TR

TR

TR

TR

TR

TR

TR

TR

TR

TR

TR

TR

TR

TR

TR

TR

TR

TR

TR

TR

TR

TR

TR

TR

TR

TR

TR

TR

TR

TR

TR

TR

TR

TR

TR

TR

TR

TR

TR

TR

TR

TR

TR

TR

TR

TR

TR

TR

TR

TR

TR

TR

TR

TR

TR

TR

TR

TR

TR

TR

TR

TR

TR

TR

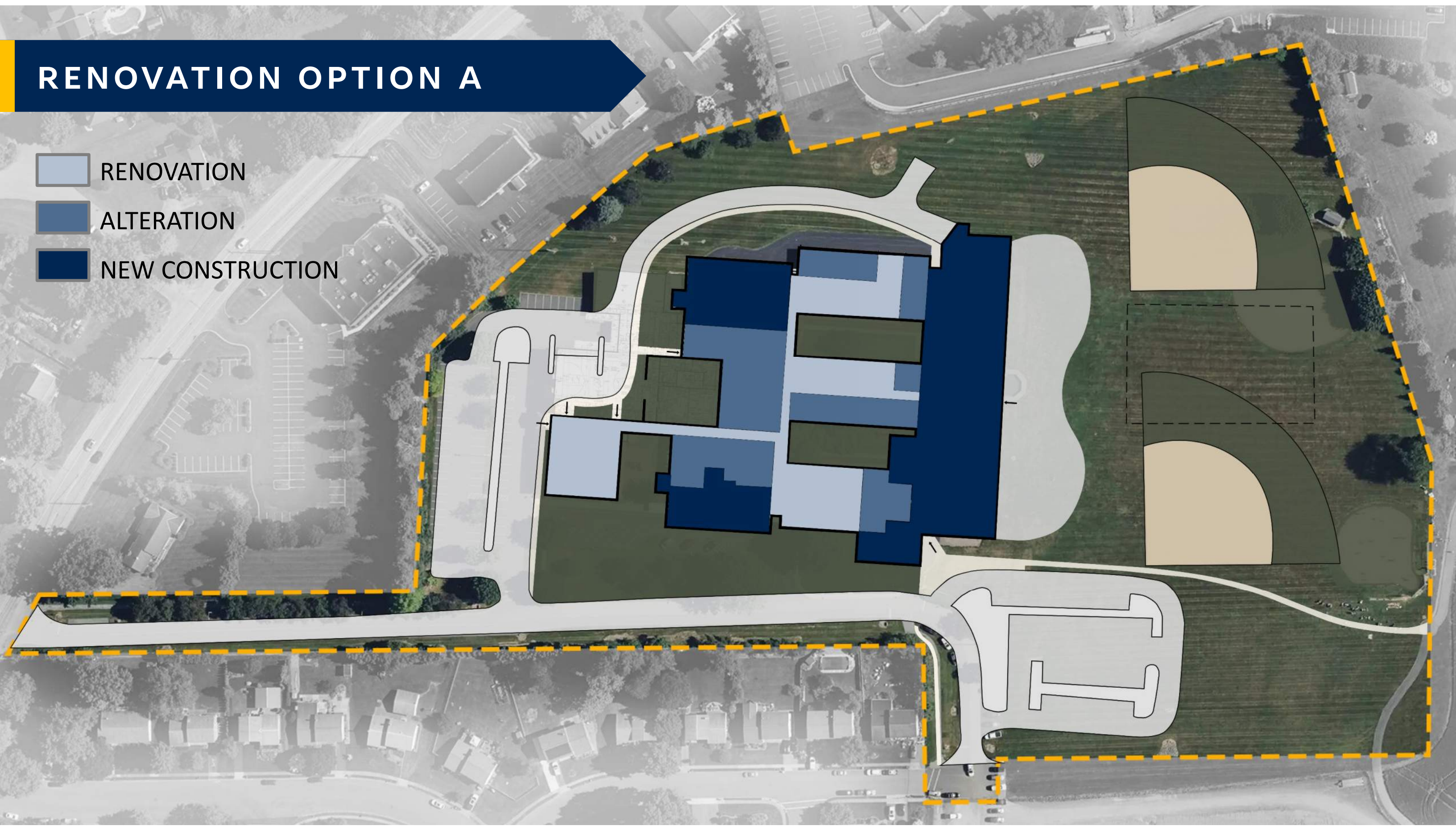
TR

TR

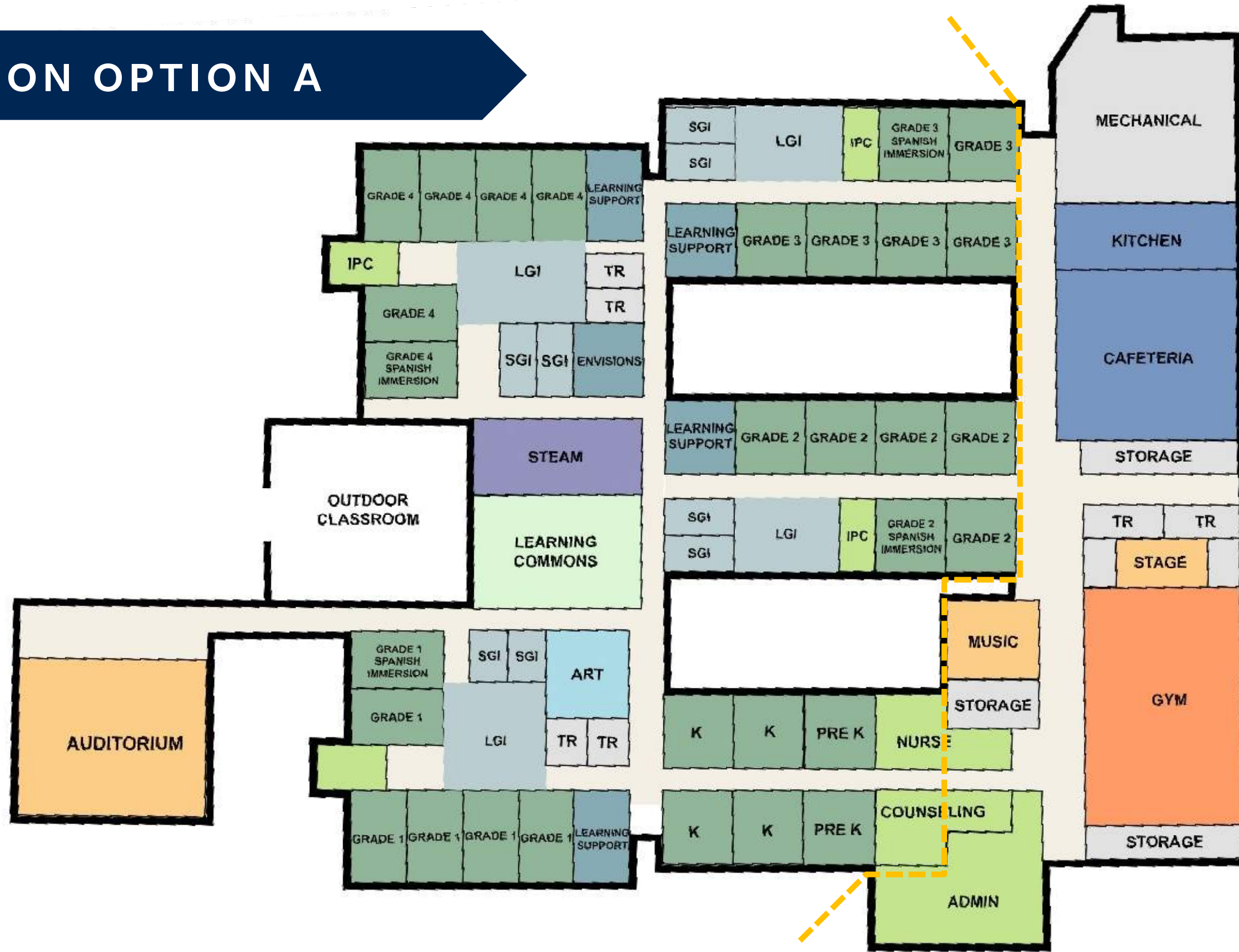
TR

# RENOVATION OPTION A

- RENOVATION
- ALTERATION
- NEW CONSTRUCTION

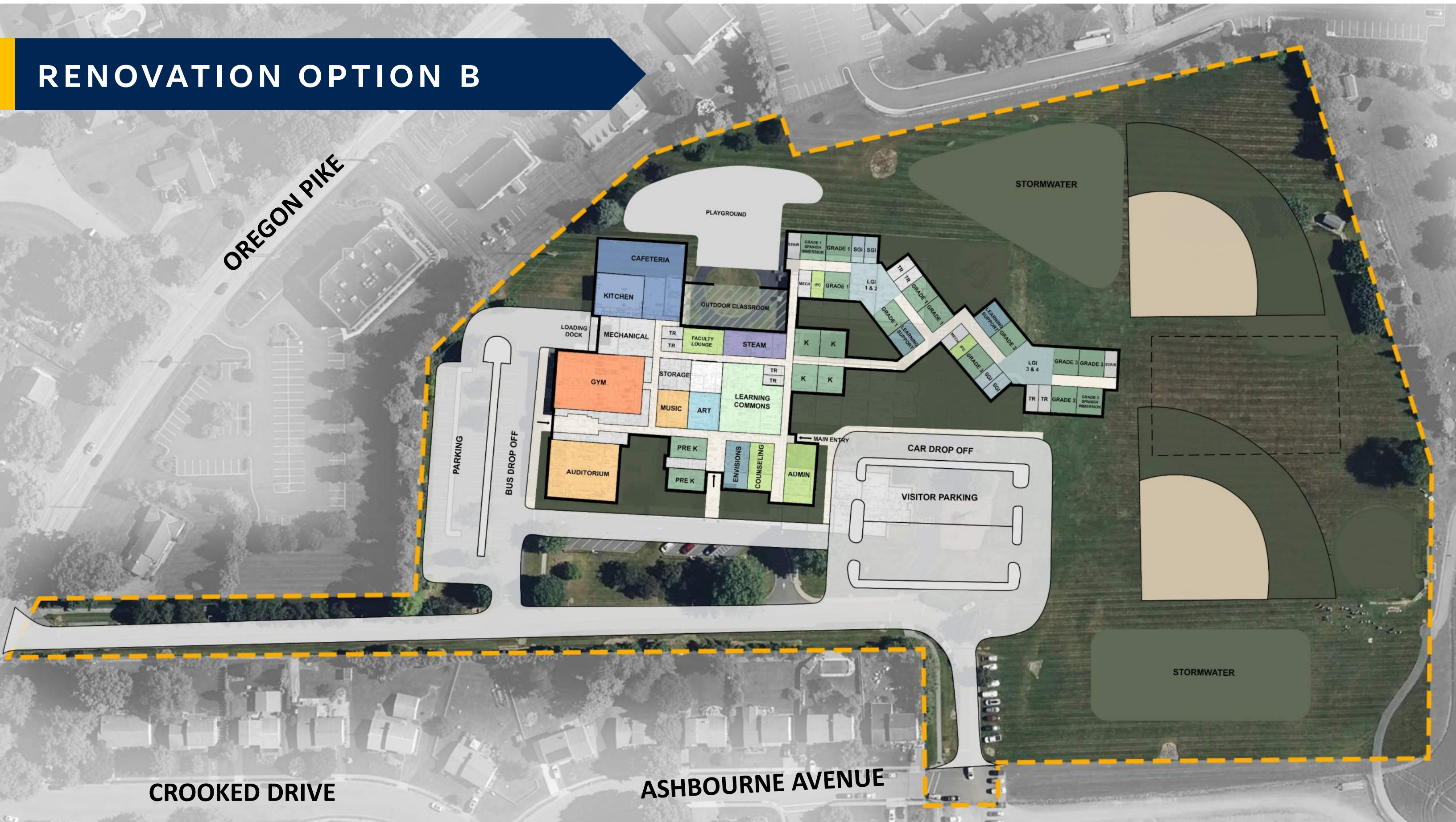


# RENOVATION OPTION A



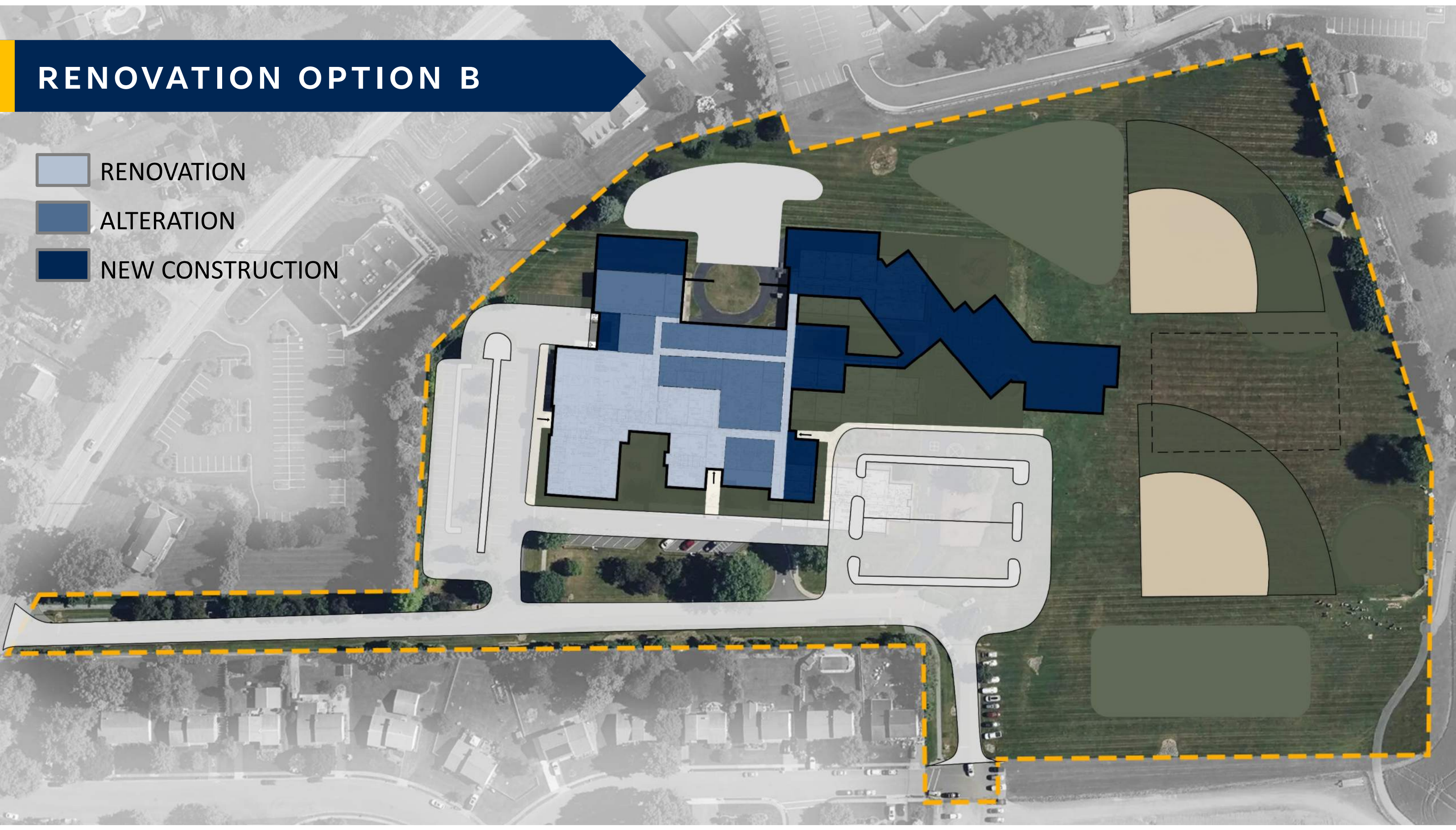
FLOOR 01

# RENOVATION OPTION B



# RENOVATION OPTION B

- RENOVATION
- ALTERATION
- NEW CONSTRUCTION



# RENOVATION OPTION B



FLOOR 01

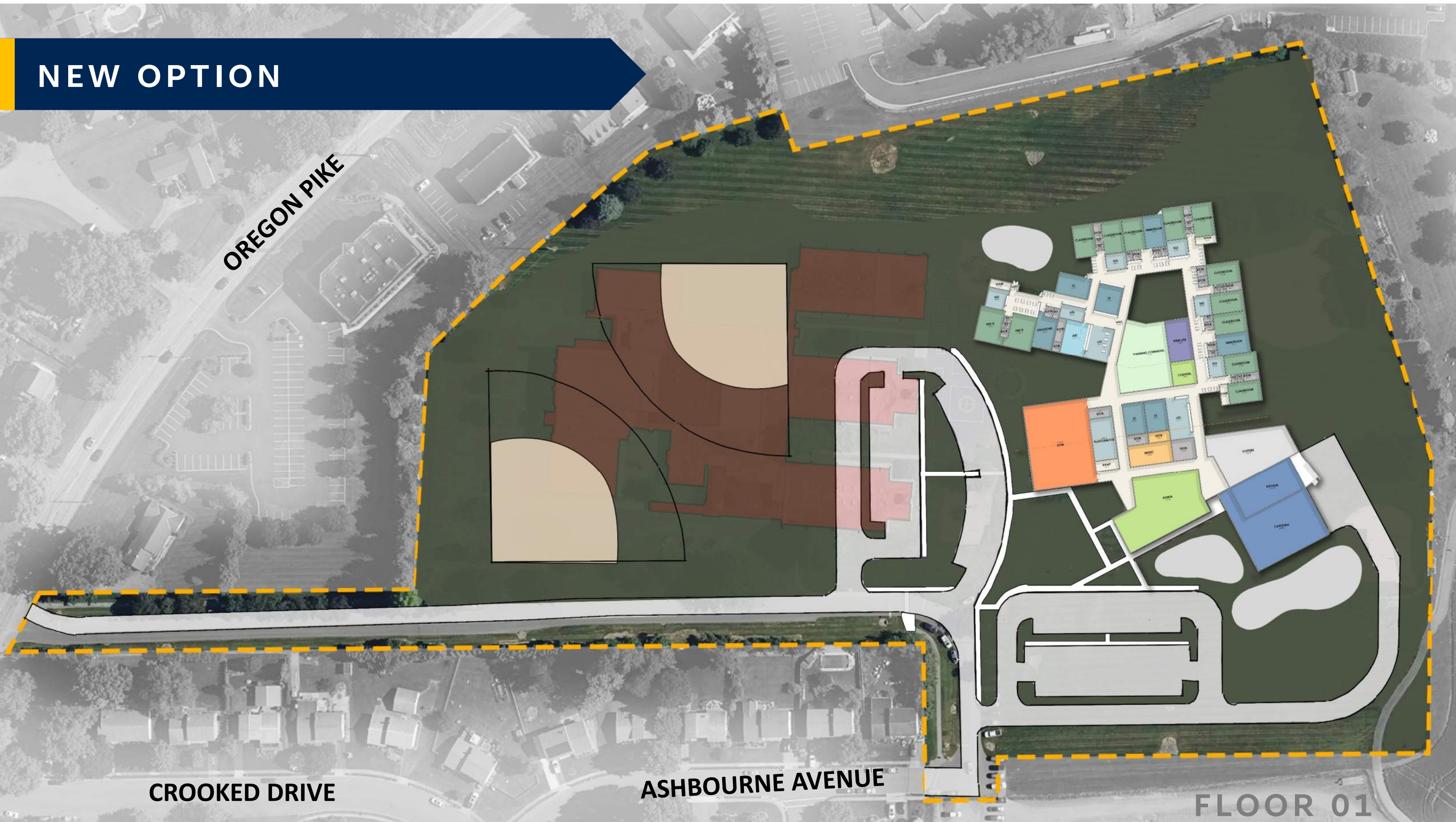
**NEW OPTION**

**OREGON PIKE**

**CROOKED DRIVE**

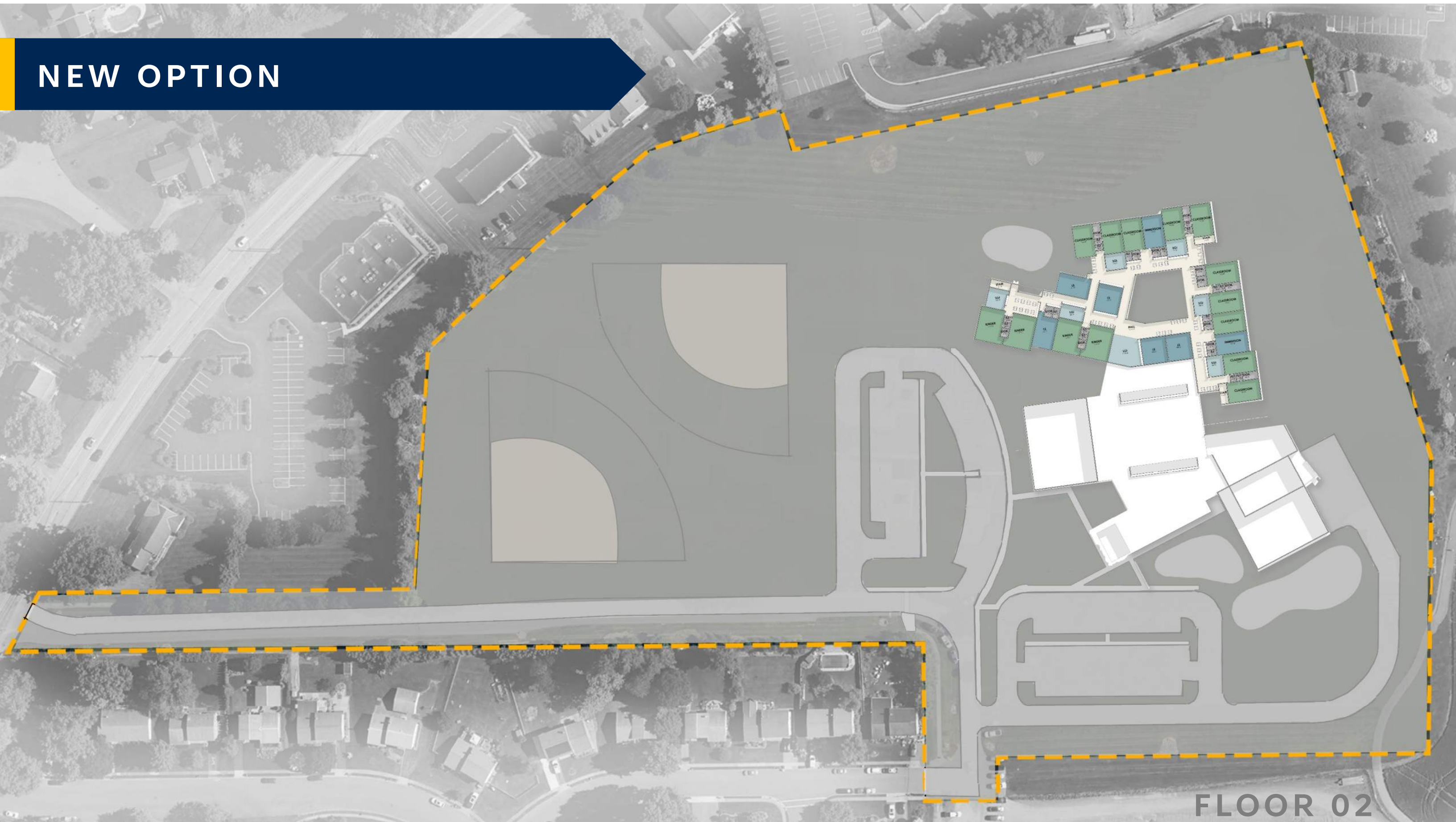
**ASHBOURNE AVENUE**

**FLOOR 01**





**NEW OPTION**



**FLOOR 02**

# NEW OPTION



### Department Legend

- ADMIN-COUNSEL-NURSE
- ATHLETICS-PE
- CAFETERIA-DINING
- CIRCULATION
- CLASSROOM
- FINE ARTS
- FLEX LEARNING-LGI
- LEARNING COMMONS
- LEARNING SUPPORT-SPECIAL ED
- PERFORMING ARTS
- STEM-TECH ED-DIGITAL TECH
- SUPPORT AREAS
- UTILITY-BUILDING SYSTEMS



# NEW OPTION



# NEW OPTION



NEW OPTION



# NEW OPTION



# Next Steps

- ❑ Town Hall at Nitrauer Elementary School  
Tours: 5:30-6:30 pm :: Presentation 6:30-7:30 pm
- ❑ Program Verification
- ❑ February 5, 2026 – Facilities Committee Meeting  
Options, Cost Estimates and Recommendations
- ❑ February 19, 2026 – Board Meeting  
Options / Recommendation / Vote

THANK  
YOU

rlps  
ARCHITECTS