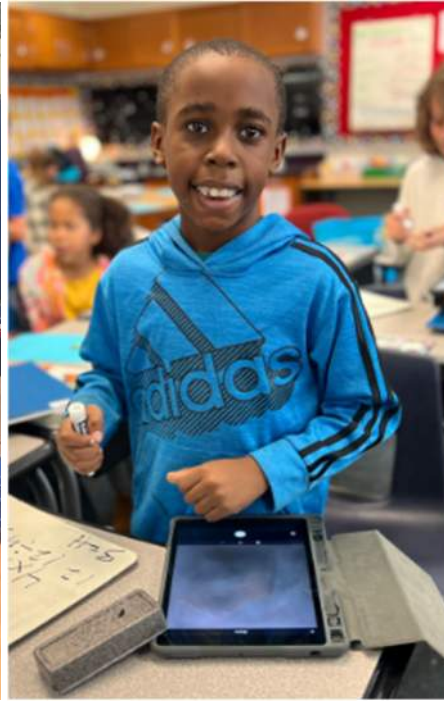


MANHEIM TOWNSHIP SCHOOL DISTRICT



PHASE 1 ARCHITECTURAL SERVICES NITRAUER ELEMENTARY SCHOOL

February 5, 2026

Outline

- ❑ OPTIONS
- ❑ SCHEDULES
- ❑ EVALUATION/ COST
- ❑ RECOMMENDATION

Options

OPTIONS

Status Quo

- Existing building footprint: New systems and selected renovation areas

Additions and Renovations

- Option A
- Option B

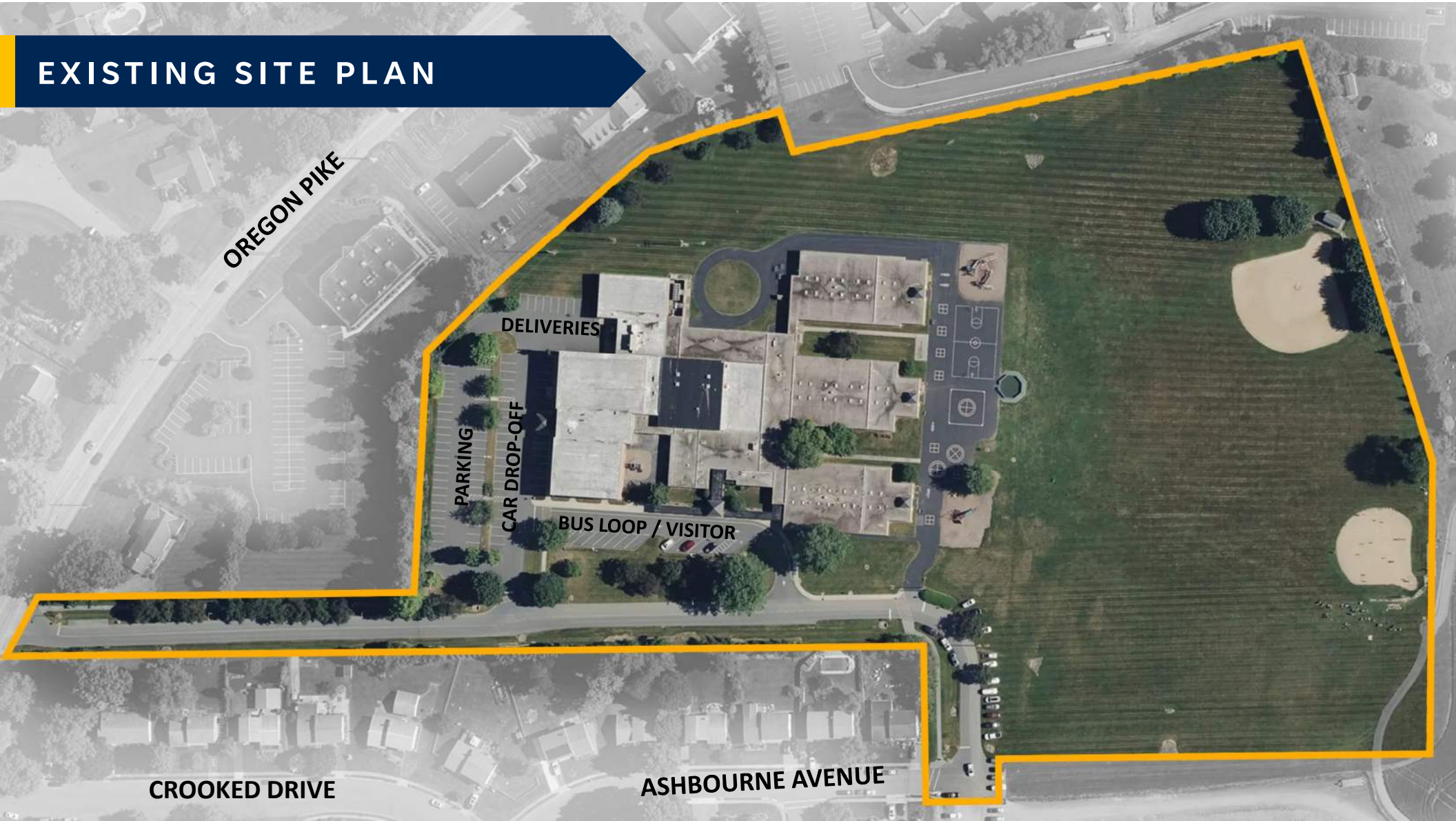
New Building

- Outside Existing building footprint

SITE PLAN



EXISTING SITE PLAN



OREGON PIKE

DELIVERIES

PARKING

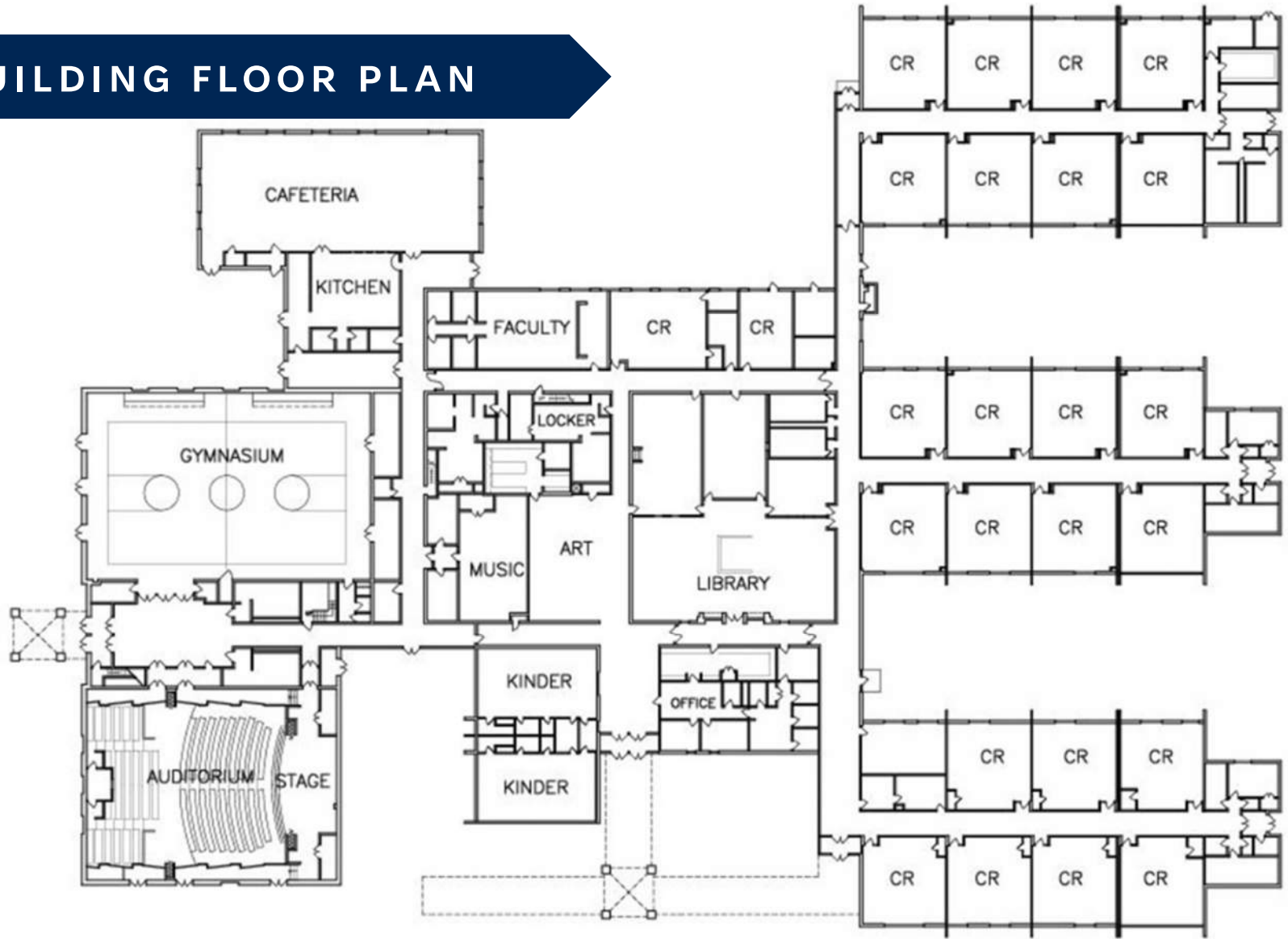
CAR DROP-OFF

BUS LOOP / VISITOR

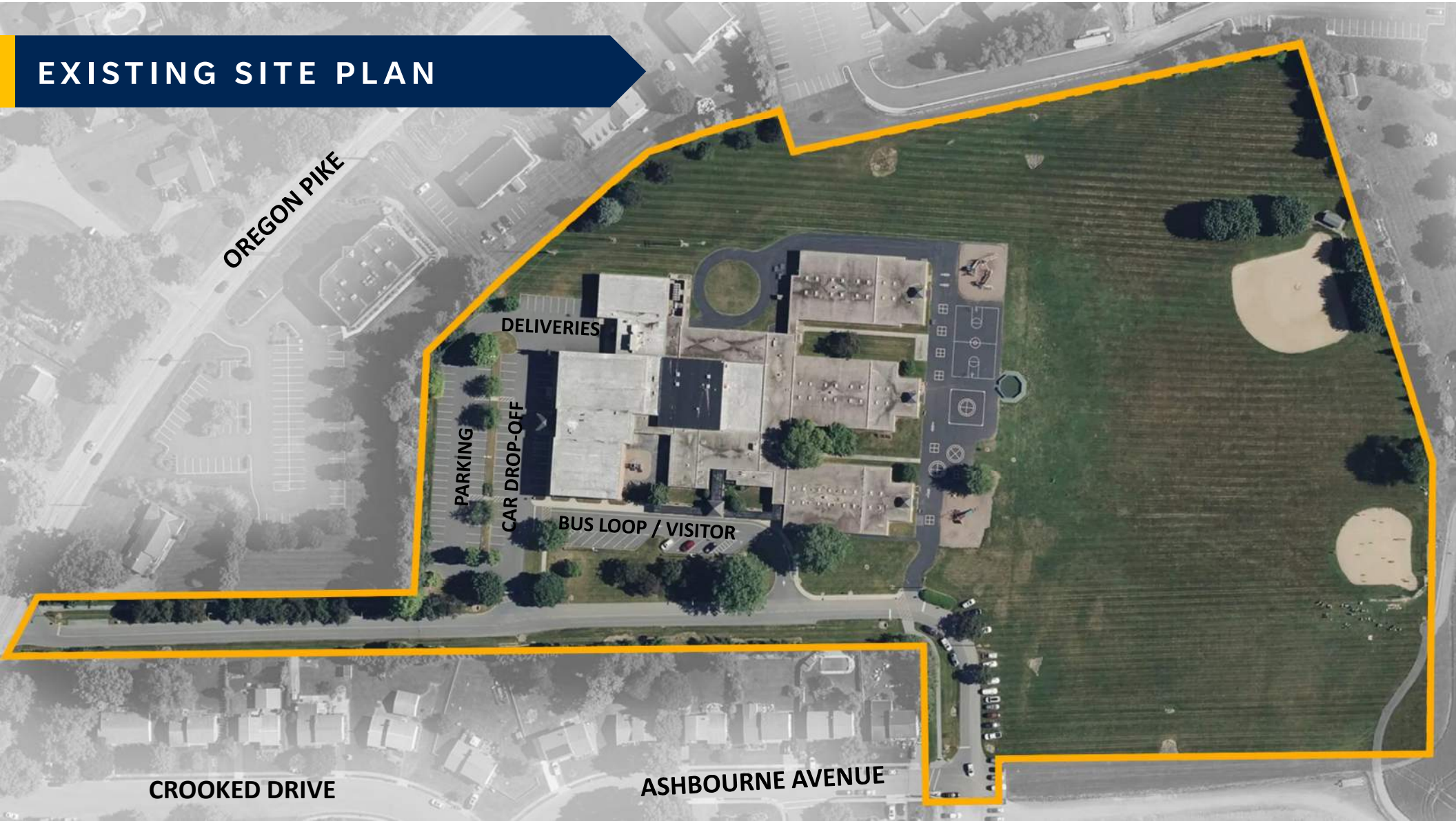
CROOKED DRIVE

ASHBOURNE AVENUE

EXISTING BUILDING FLOOR PLAN



EXISTING SITE PLAN



OREGON PIKE

DELIVERIES

PARKING

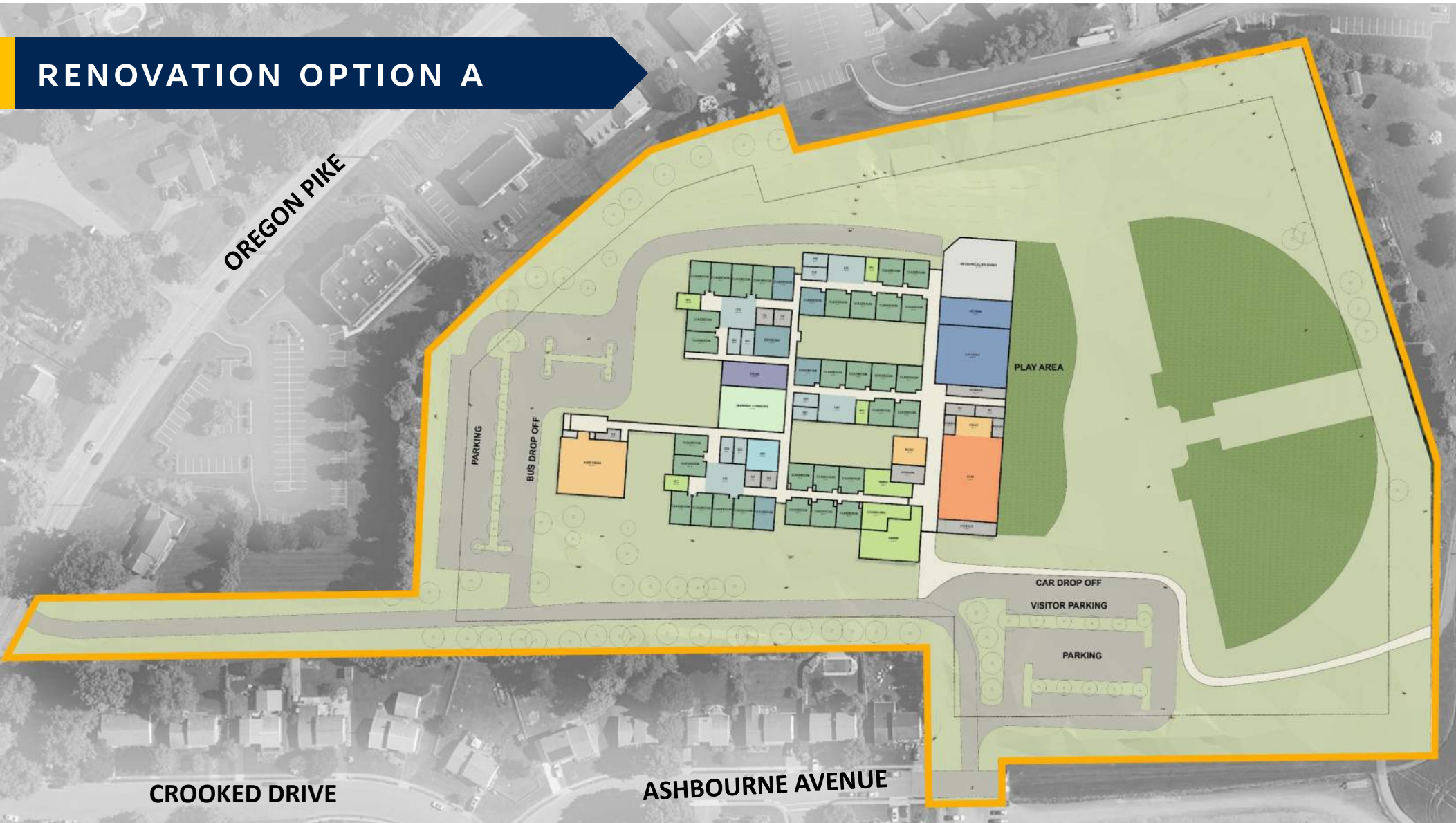
CAR DROP-OFF

BUS LOOP / VISITOR

CROOKED DRIVE

ASHBOURNE AVENUE

RENOVATION OPTION A



OREGON PIKE

PARKING

BUS DROP OFF

PLAY AREA

CAR DROP OFF

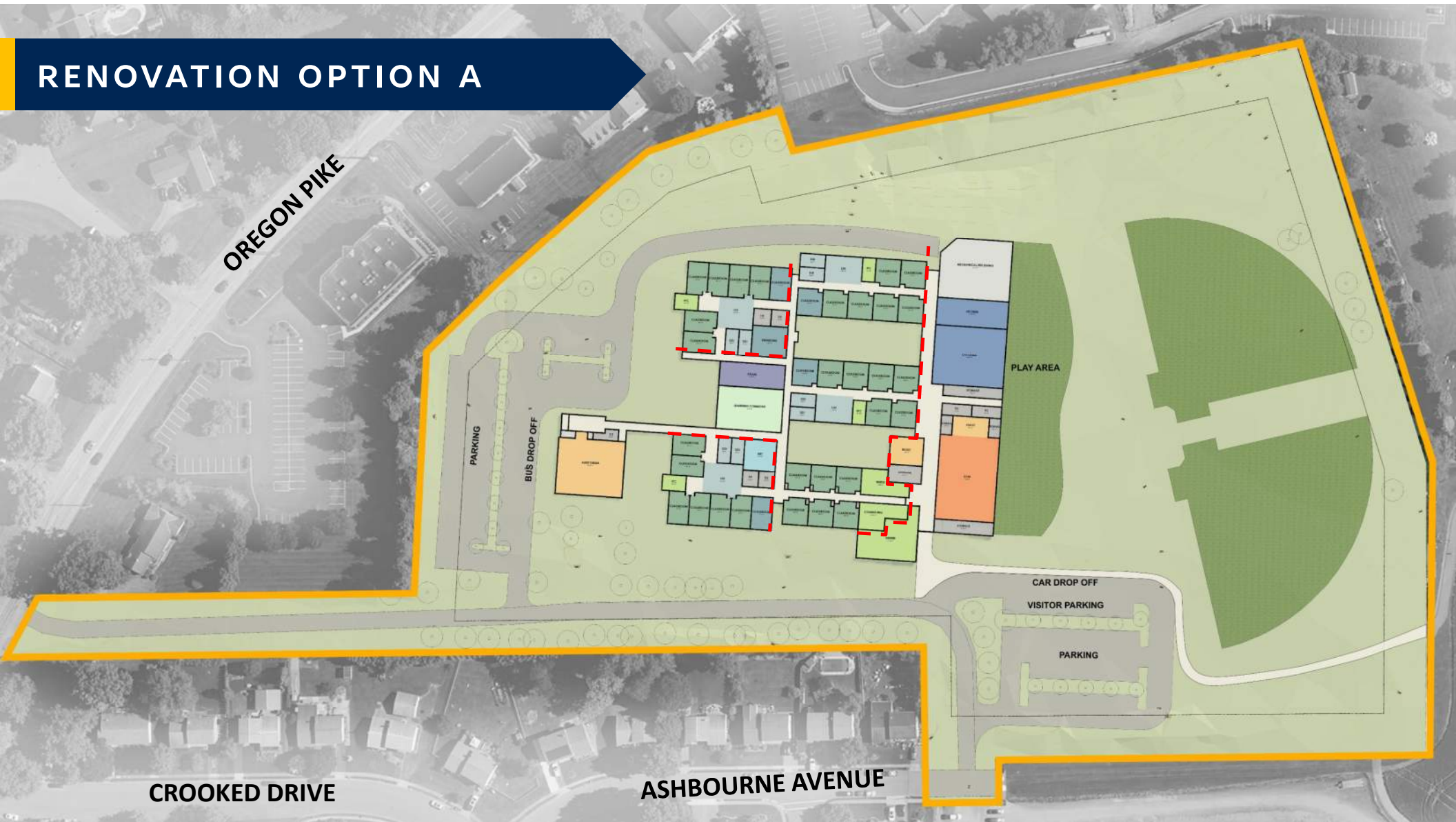
VISITOR PARKING

PARKING

CROOKED DRIVE

ASHBOURNE AVENUE

RENOVATION OPTION A



RENOVATION OPTION A

Department Legend

- ADMIN-COUNSEL-NURSE
- ATHLETICS-PE
- CAFETERIA-DINING
- CIRCULATION
- CLASSROOM
- FINE ARTS
- FLEX LEARNING-LGI
- LEARNING COMMONS
- LEARNING SUPPORT-SPECIAL ED
- PERFORMING ARTS
- STEM-TECH ED-DIGITAL TECH
- SUPPORT AREAS
- UTILITY-BUILDING SYSTEMS



FLOOR 01

RENOVATION OPTION A

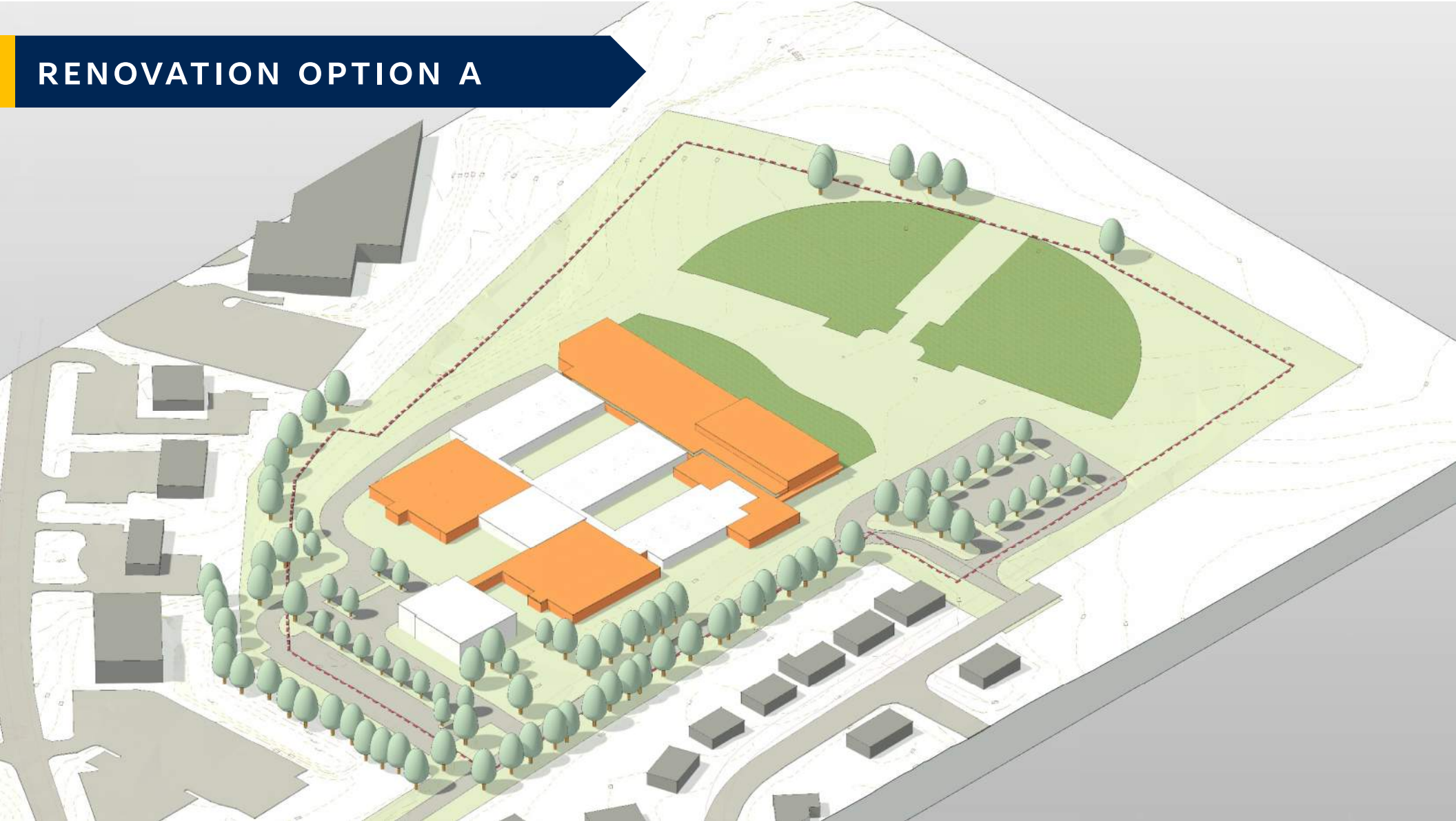
Department Legend

- ADMIN-COUNSEL-NURSE
- ATHLETICS-PE
- CAFETERIA-DINING
- CIRCULATION
- CLASSROOM
- FINE ARTS
- FLEX LEARNING-LGI
- LEARNING COMMONS
- LEARNING SUPPORT-SPECIAL ED
- PERFORMING ARTS
- STEM-TECH ED-DIGITAL TECH
- SUPPORT AREAS
- UTILITY-BUILDING SYSTEMS

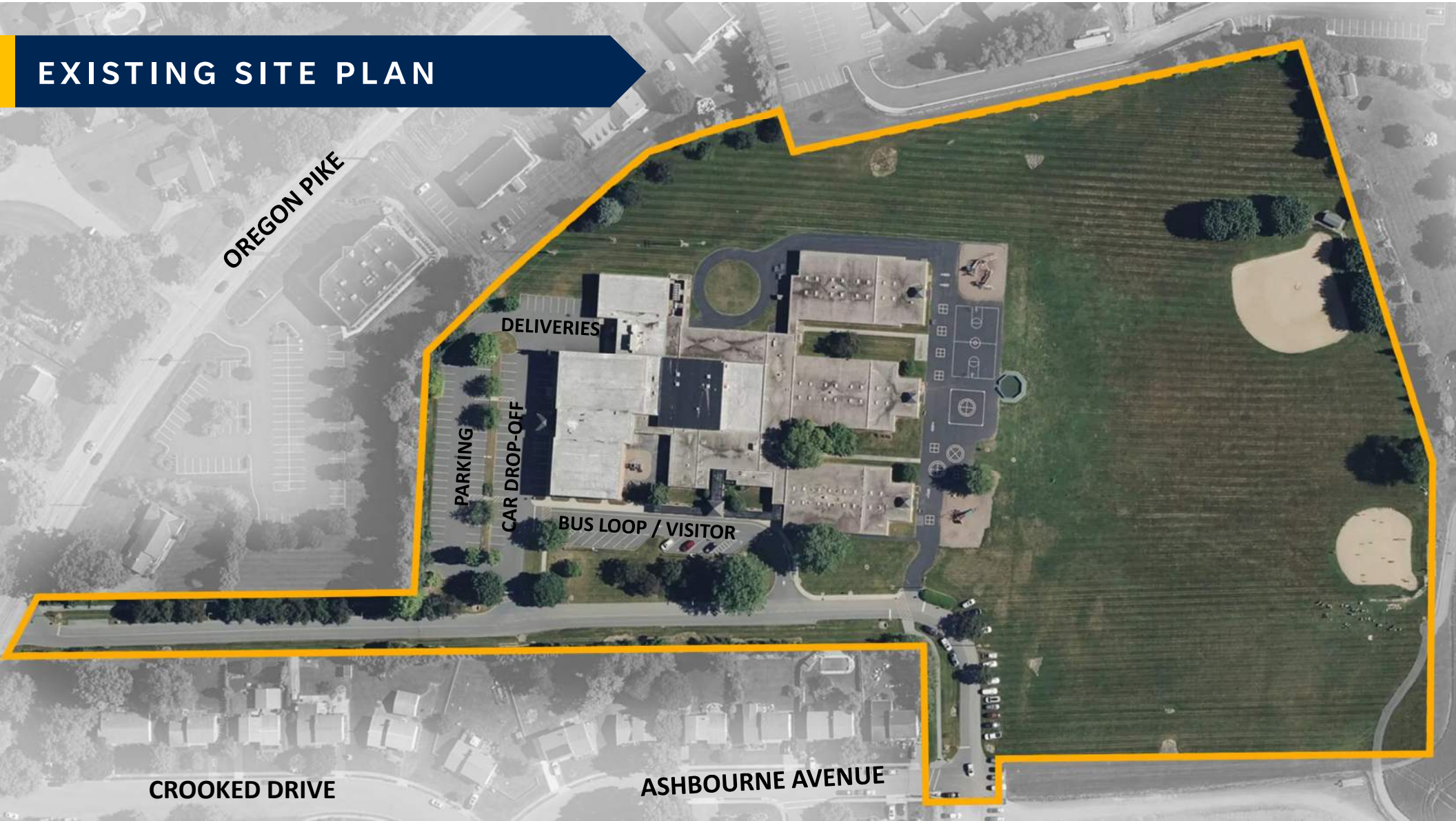


FLOOR 01

RENOVATION OPTION A



EXISTING SITE PLAN



OREGON PIKE

DELIVERIES

PARKING

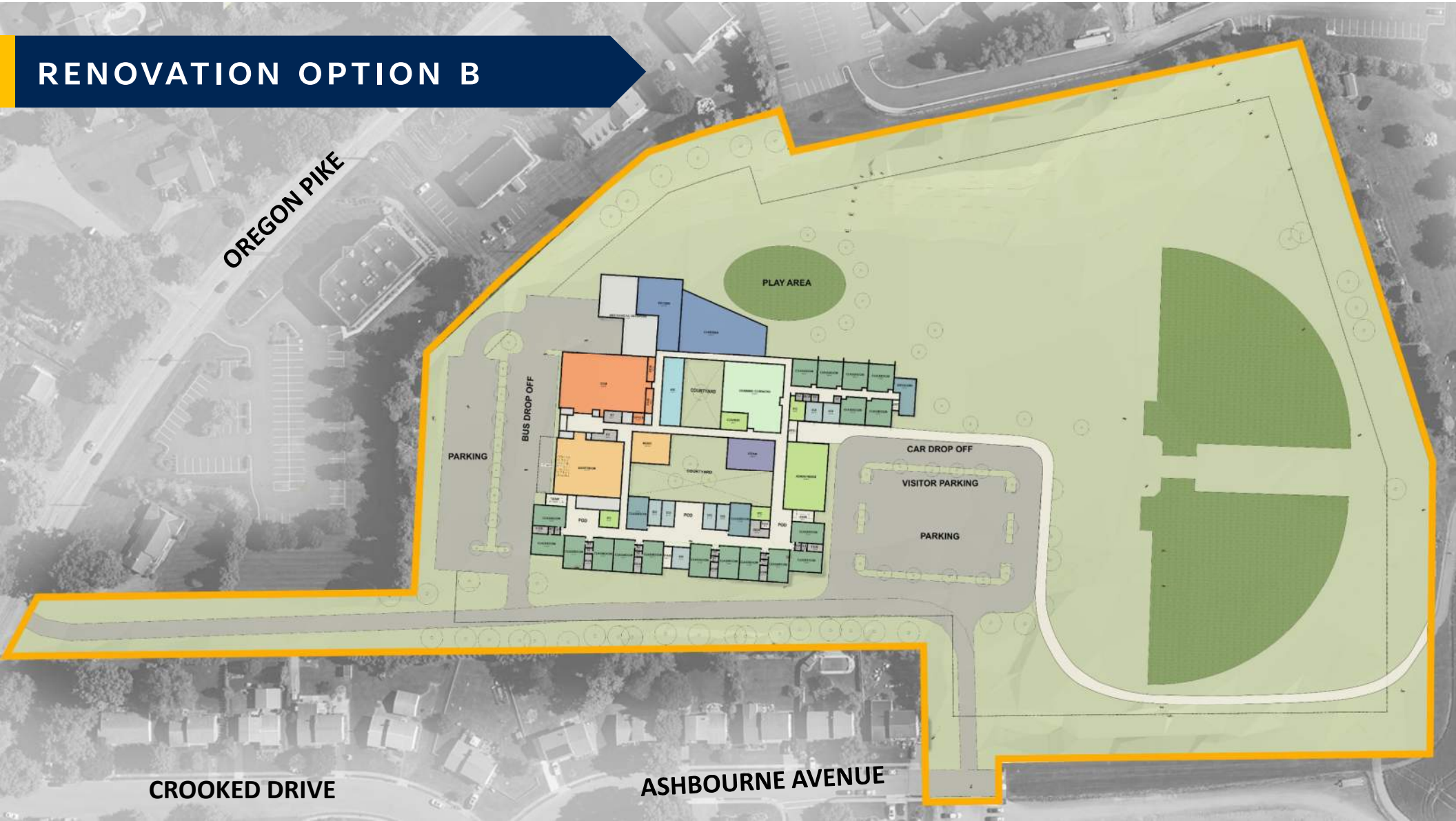
CAR DROP-OFF

BUS LOOP / VISITOR

CROOKED DRIVE

ASHBOURNE AVENUE

RENOVATION OPTION B



OREGON PIKE

PLAY AREA

PARKING

BUS DROP OFF

CAR DROP OFF

VISITOR PARKING

PARKING

CROOKED DRIVE

ASHBOURNE AVENUE

RENOVATION OPTION B



OREGON PIKE

PLAY AREA

PARKING

BUS DROP OFF

COURTYARD

COURTYARD

CAR DROP OFF

VISITOR PARKING

PARKING

CROOKED DRIVE

ASHBOURNE AVENUE

RENOVATION OPTION B

Department Legend

- ADMIN-COUNSEL-NURSE
- ATHLETICS-PE
- CAFETERIA-DINING
- CIRCULATION
- CLASSROOM
- FINE ARTS
- FLEX LEARNING-LGI
- LEARNING COMMONS
- LEARNING SUPPORT-SPECIAL ED
- PERFORMING ARTS
- STEM-TECH ED-DIGITAL TECH
- SUPPORT AREAS
- UTILITY-BUILDING SYSTEMS



FLOOR 01

RENOVATION OPTION B

Department Legend

- ADMIN-COUNSEL-NURSE
- ATHLETICS-PE
- CAFETERIA-DINING
- CIRCULATION
- CLASSROOM
- FINE ARTS
- FLEX LEARNING-LGI
- LEARNING COMMONS
- LEARNING SUPPORT-SPECIAL ED
- PERFORMING ARTS
- STEM-TECH ED-DIGITAL TECH
- SUPPORT AREAS
- UTILITY-BUILDING SYSTEMS



FLOOR 01

RENOVATION OPTION B

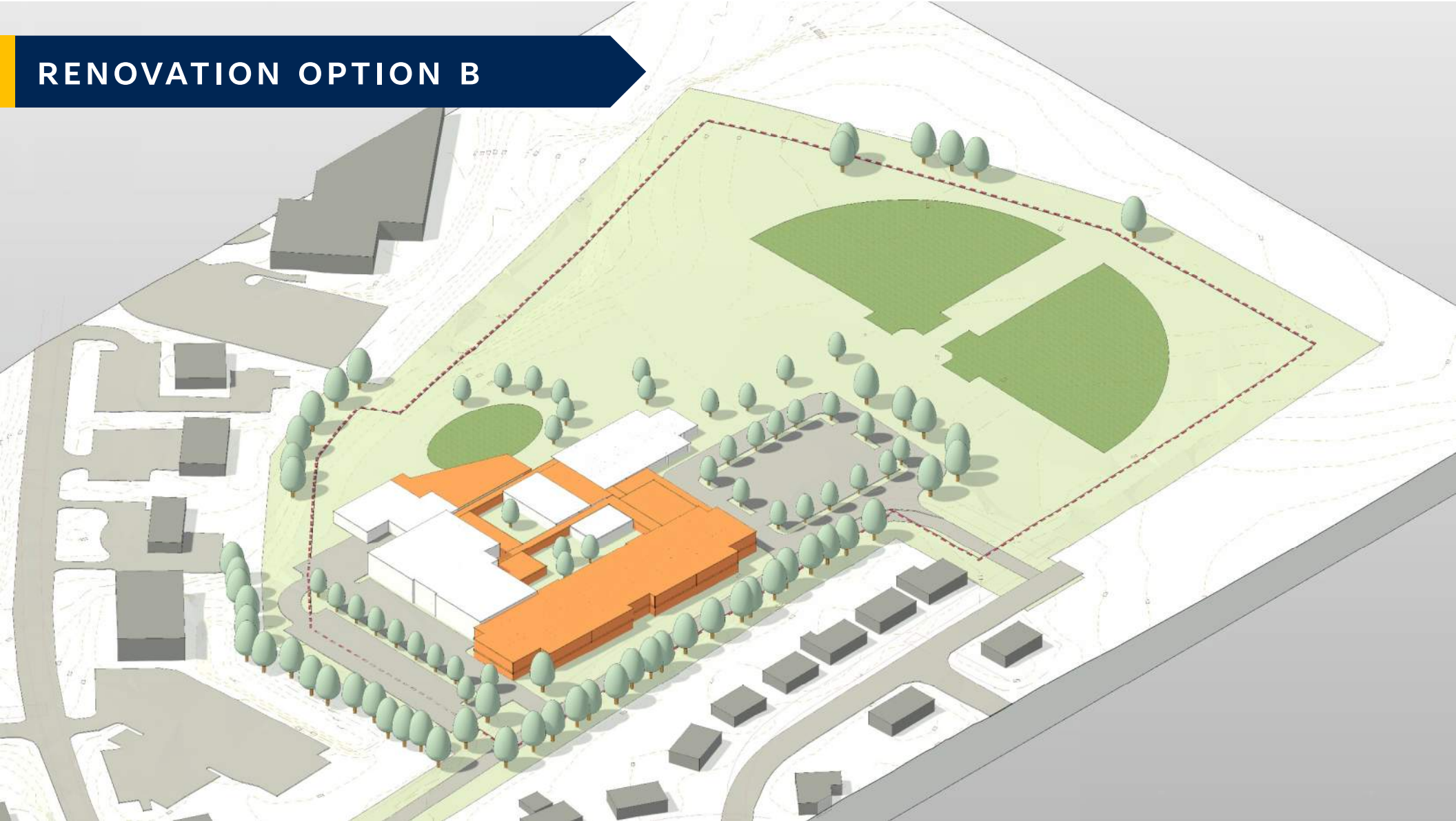
Department Legend

- ADMIN-COUNSEL-NURSE
- ATHLETICS-PE
- CAFETERIA-DINING
- CIRCULATION
- CLASSROOM
- FINE ARTS
- FLEX LEARNING-LGI
- LEARNING COMMONS
- LEARNING SUPPORT-SPECIAL ED
- PERFORMING ARTS
- STEM-TECH ED-DIGITAL TECH
- SUPPORT AREAS
- UTILITY-BUILDING SYSTEMS

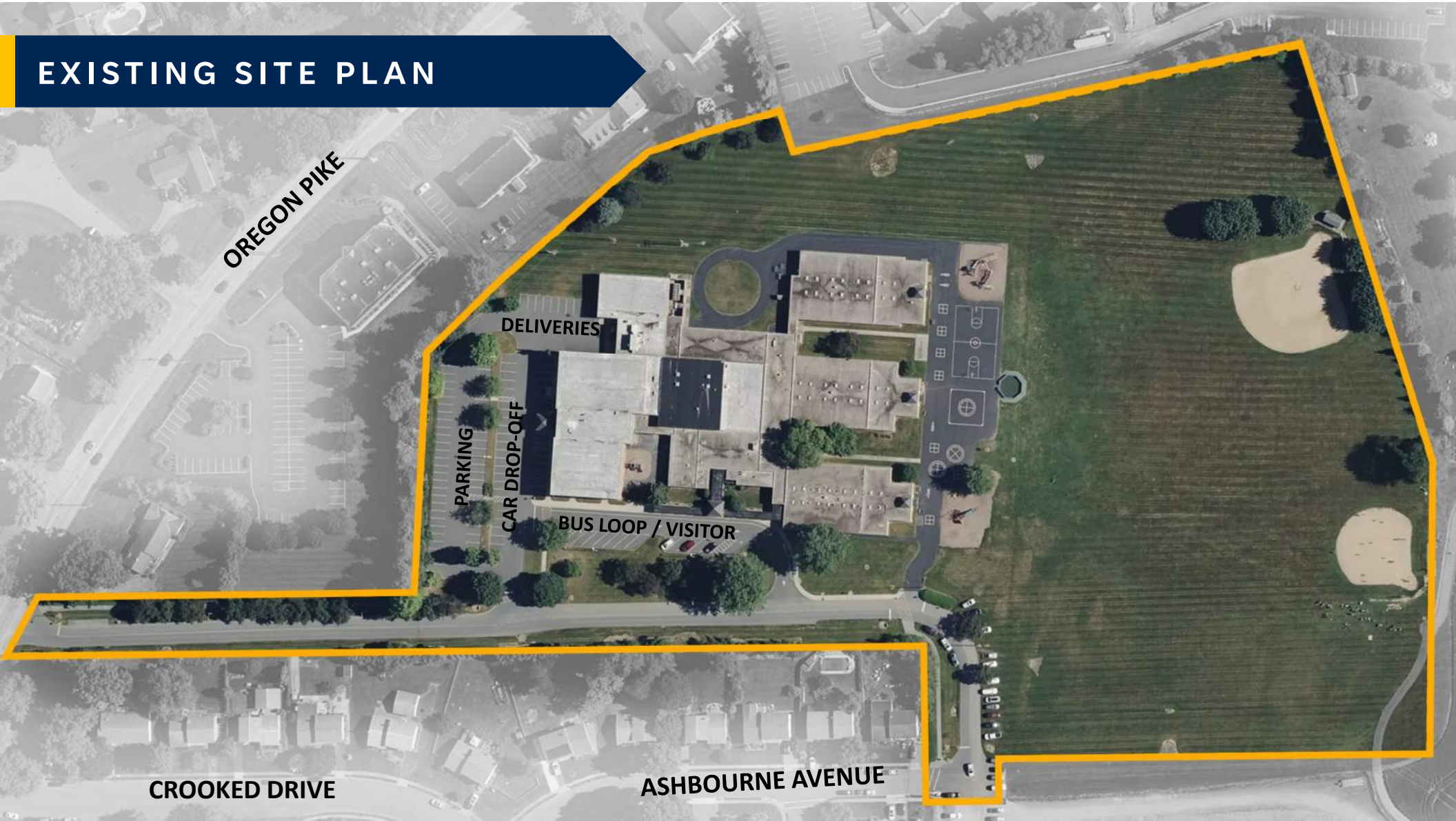


FLOOR 02

RENOVATION OPTION B



EXISTING SITE PLAN



OREGON PIKE

DELIVERIES

PARKING

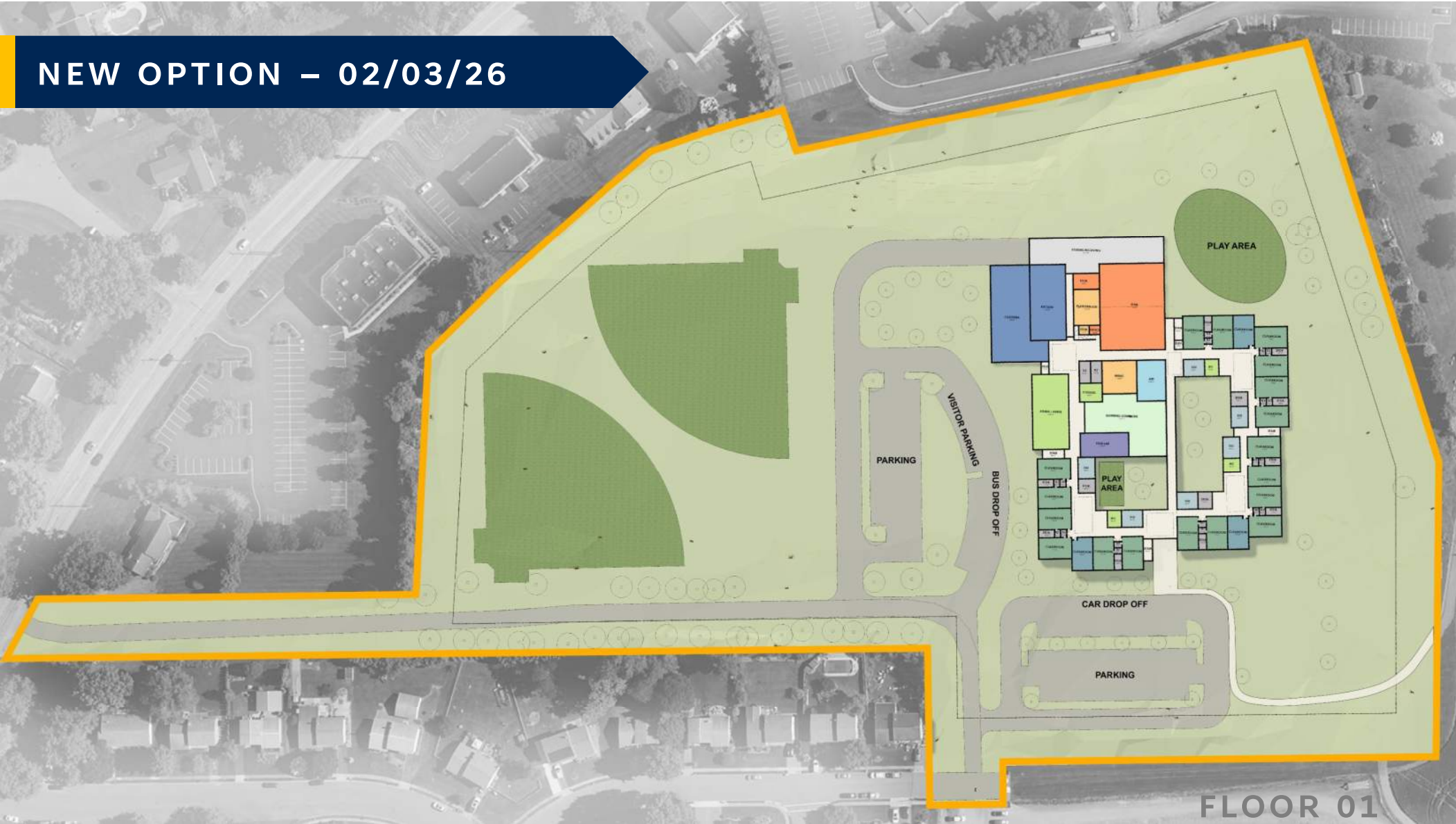
CAR DROP-OFF

BUS LOOP / VISITOR

CROOKED DRIVE

ASHBOURNE AVENUE

NEW OPTION – 02/03/26



NEW OPTION – 02/03/26

Department Legend

- ADMIN-COUNSEL-NURSE
- ATHLETICS-PE
- CAFETERIA-DINING
- CIRCULATION
- CLASSROOM
- FINE ARTS
- FLEX LEARNING-LGI
- LEARNING COMMONS
- LEARNING SUPPORT-SPECIAL ED
- PERFORMING ARTS
- STEM-TECH ED-DIGITAL TECH
- SUPPORT AREAS
- UTILITY-BUILDING SYSTEMS



FLOOR 01

NEW OPTION – 02/03/26

Department Legend

- ADMIN-COUNSEL-NURSE
- ATHLETICS-PE
- CAFETERIA-DINING
- CIRCULATION
- CLASSROOM
- FINE ARTS
- FLEX LEARNING-LGI
- LEARNING COMMONS
- LEARNING SUPPORT-SPECIAL ED
- PERFORMING ARTS
- STEM-TECH ED-DIGITAL TECH
- SUPPORT AREAS
- UTILITY-BUILDING SYSTEMS

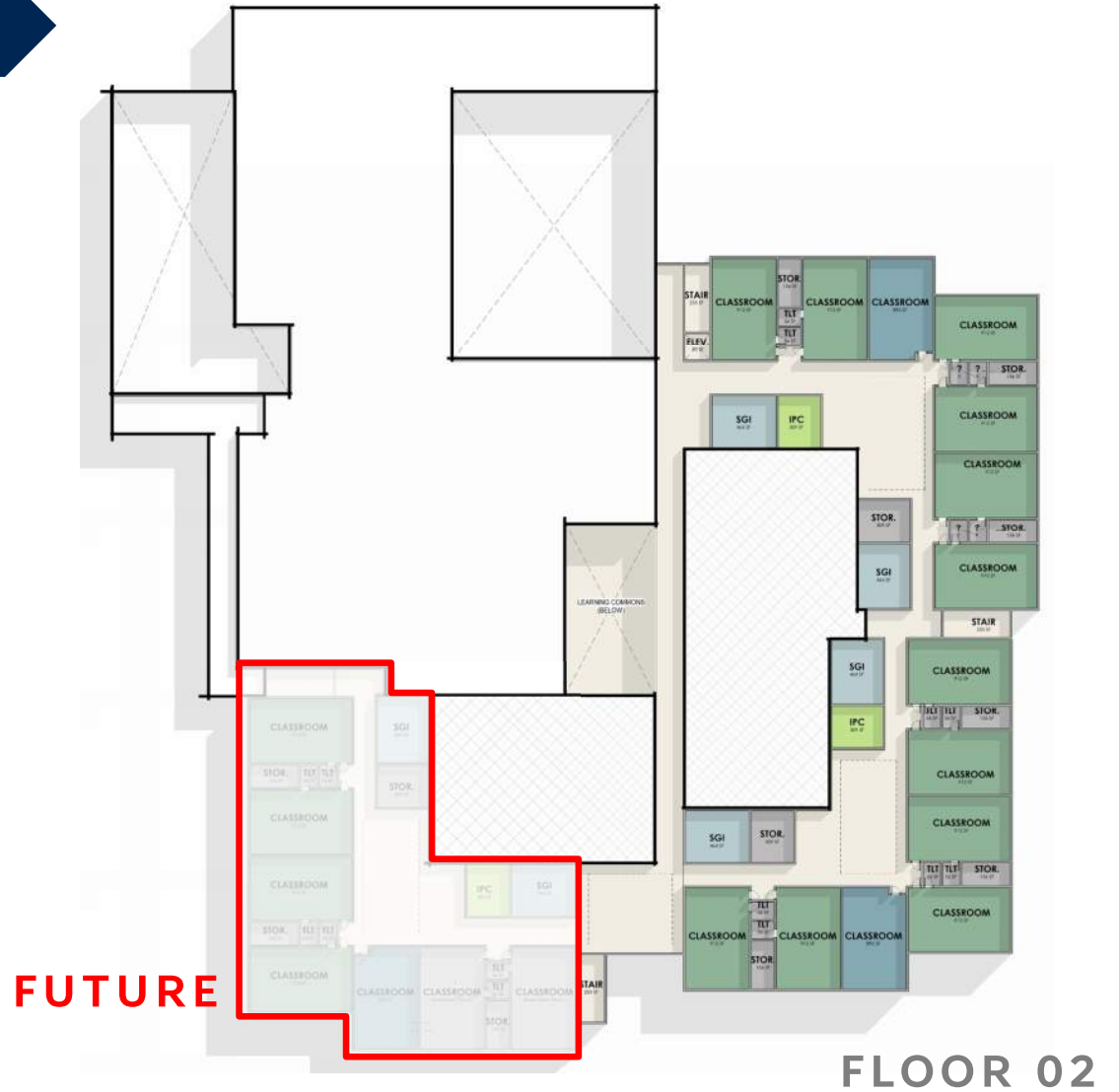


FLOOR 01

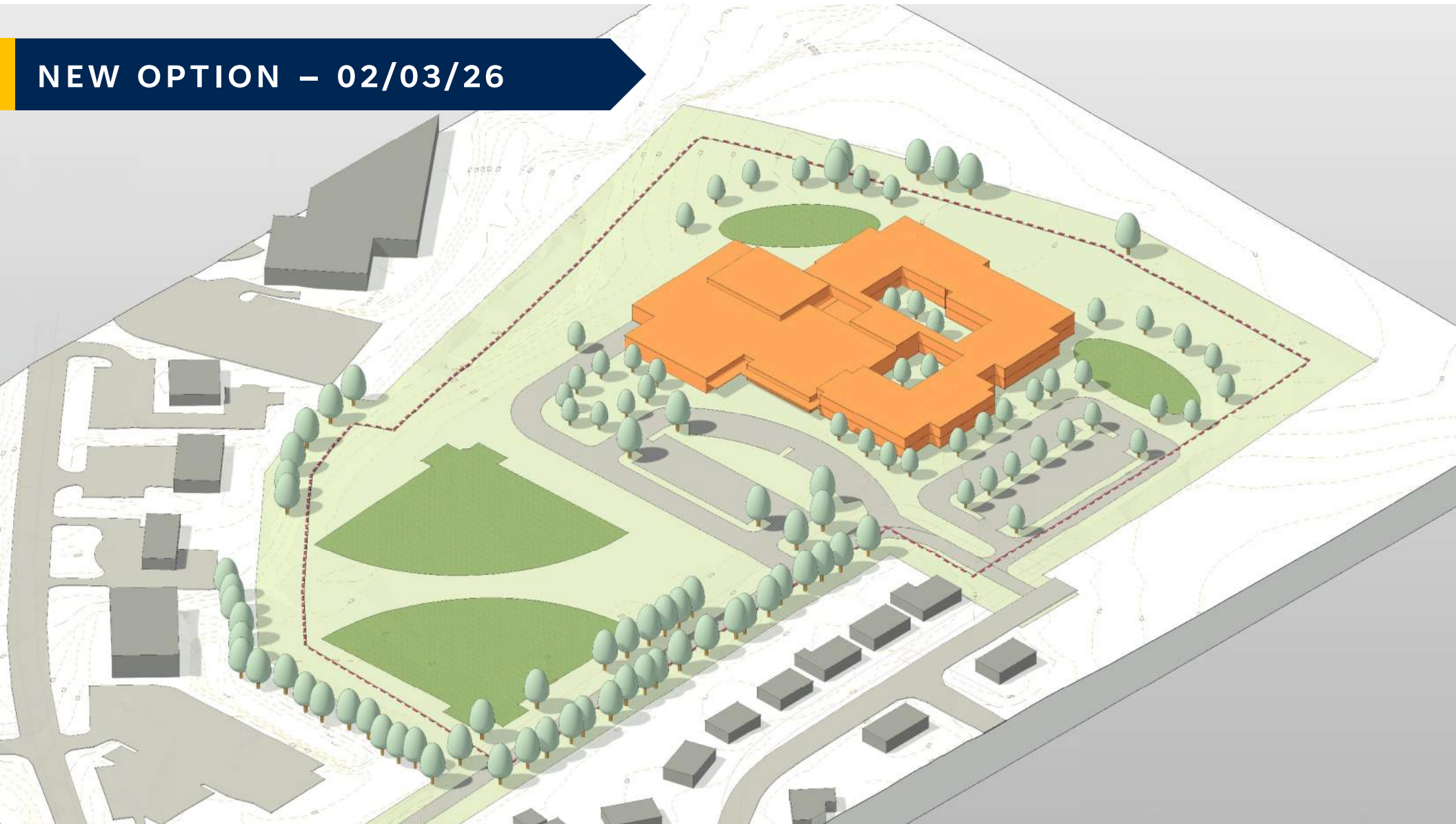
NEW OPTION – 02/03/26

Department Legend

- ADMIN-COUNSEL-NURSE
- ATHLETICS-PE
- CAFETERIA-DINING
- CIRCULATION
- CLASSROOM
- FINE ARTS
- FLEX LEARNING-LGI
- LEARNING COMMONS
- LEARNING SUPPORT-SPECIAL ED
- PERFORMING ARTS
- STEM-TECH ED-DIGITAL TECH
- SUPPORT AREAS
- UTILITY-BUILDING SYSTEMS



NEW OPTION – 02/03/26



CURRENT OPTIONS



PRIORITY MATRIX

NITRAUER ELEMENTARY PRIORITY MATRIX	OPTIONS			
	STATUS QUO	ADD / RENO - A	ADD / RENO - B	NEW CONSTRUCTION
FACILITIES				
Site circulation (bus, car, visitors, deliveries)	0	2	2	2
Corridors, lobbies and general circulation	0	0	1	2
Security	1	2	2	2
Building longevity	1	1	1	2
Separate public spaces from educational spaces	1	0	1	2
HVAC system	0	0	2	2
Dock Access	0	2	1	2
Reuse of existing auditorium and gymnasium	2	1	2	0
Parking capacity and location	1	1	2	2
Location of playgrounds & playfields to adjacent spaces	0	2	1	2
Separated primary play area	1	0	1	2
Community responsive building	1	1	1	2
Operational expenses	0	1	1	2
EDUCATIONAL SPACES				
Future ready (SGI, LGI, STEM) and flexibility	0	1	1	2
Special Education	0	1	1	2
Program adjacencies	0	1	1	2
Collaboration & Flexible Spaces	0	0	1	2
Outdoor learning environments	0	1	1	2
Classroom size and flexibility	1	1	1	2
Safety	1	2	2	2
ENROLLMENT CAPACITY				
Meeting projected capacity needs	0	2	2	2
Options for future growth	1	1	1	2
GENERAL				
Phasing of construction (duration / complexity)	0	0	1	2
Minimal student disruption (construction)	0	0	1	2
Sustainability (approach / long-term benefits)	1	2	2	2
Healthy building design	0	1	1	2
Total	12	26	34	50
Total Project Cost	\$27.0M - \$31.3M	\$51.8M - \$58.4M	\$53.6M - \$60.3M	\$57.3M - \$63.6M
0 = Does Not Meet 1 = Meets 2 = Meets Well				

PRIORITY MATRIX

NITRAUER ELEMENTARY PRIORITY MATRIX	OPTIONS			
	STATUS QUO	ADD / RENO - A	ADD / RENO - B	NEW CONSTRUCTION
FACILITIES				
Site circulation (bus, car, visitors, deliveries)	0	2	2	2
Corridors, lobbies and general circulation	0	0	1	2
Security	1	2	2	2
Building longevity	1	1	1	2
Separate public spaces from educational spaces	1	0	1	2
HVAC system	0	0	2	2
Dock Access	0	2	1	2
Reuse of existing auditorium and gymnasium	2	1	2	0
Parking capacity and location	1	1	2	2
Location of playgrounds & playfields to adjacent spaces	0	2	1	2
Separated primary play area	1	0	1	2
Community responsive building	1	1	1	2
Operational expenses	0	1	1	2
EDUCATIONAL SPACES				
Future ready (SGI, LGI, STEM) and flexibility	1	1	1	2
Special Education	1	1	1	2
Program adjacencies	0	1	1	2
Collaboration & Flexible Spaces	0	0	1	2
Outdoor learning environments	0	1	1	2
Classroom size and flexibility	1	1	1	2
Safety	1	2	2	2
ENROLLMENT CAPACITY				
Meeting projected capacity needs	0	2	2	2
Options for future growth	1	1	1	2
GENERAL				
Phasing of construction (duration / complexity)	0	0	1	2
Minimal student disruption (construction)	0	0	1	2
Sustainability (approach / long-term benefits)	1	2	2	2
Healthy building design	0	1	1	2
Total	12	26	34	50
Total Project Cost	\$27.0M - \$31.3M	\$51.8M - \$58.4M	\$53.6M - \$60.3M	\$57.3M - \$63.6M

0 = Does Not Meet 1 = Meets 2 = Meets Well

PRIORITY MATRIX

NITRAUER ELEMENTARY PRIORITY MATRIX	OPTIONS			
	STATUS QUO	ADD / RENO - A	ADD / RENO - B	NEW CONSTRUCTION
FACILITIES				
Site circulation (bus, car, visitors, deliveries)	0	2	2	2
Corridors, lobbies and general circulation	0	0	1	2
Security	1	2	2	2
Building longevity	1	1	1	2
Separate public spaces from educational spaces	1	0	1	2
HVAC system	0	0	2	2
Dock Access	0	2	1	2
Reuse of existing auditorium and gymnasium	2	1	2	0
Parking capacity and location	1	1	2	2
Location of playgrounds & playfields to adjacent spaces	0	2	1	2
Separated primary play area	1	0	1	2
Community responsive building	1	1	1	2
Operational expenses	0	1	1	2
EDUCATIONAL SPACES				
Future ready (SGI, LGI, STEM) and flexibility	1	1	1	2
Special Education	1	1	1	2
Program adjacencies	0	1	1	2
Collaboration & Flexible Spaces	0	0	1	2
Outdoor learning environments	0	1	1	2
Classroom size and flexibility	1	1	1	2
Safety	1	2	2	2
ENROLLMENT CAPACITY				
Meeting projected capacity needs	0	2	2	2
Options for future growth	1	1	1	2
GENERAL				
Phasing of construction (duration / complexity)	0	0	1	2
Minimal student disruption (construction)	0	0	1	2
Sustainability (approach / long-term benefits)	1	2	2	2
Healthy building design	0	1	1	2
Total	12	26	34	50
Total Project Cost	\$27.0M - \$31.3M	\$51.8M - \$58.4M	\$53.6M - \$60.3M	\$57.3M - \$63.6M

0 = Does Not Meet 1 = Meets 2 = Meets Well

Next Steps

- ❑ February 5, 2026 – Facilities Committee Meeting
Options, Cost Estimates and Recommendations
- ❑ February 12, 2026 – Board Meeting
Present Nitrauer Phase II Contract
- ❑ February 19, 2026 – Board Meeting
Options / Recommendation / Vote,
Approve Nitrauer Phase II Contract

**THANK
YOU**

rlps
ARCHITECTS